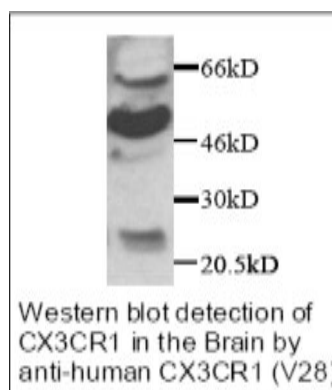


CX₃CR1, Human pAb

Catalog No.	CPC200	Quantity:	200 µg
Name:	CX ₃ CR1		
Alternate Names:	V28		
Description:	This polyclonal antibody detects CX ₃ CR1.		
Specificity:	Recombinant and native human CX ₃ CR1		
Host:	Rabbit		
Immunogen:	Recombinant Human CX ₃ CR1 amino terminal domain		
Isotype:	IgG		
Formulation:	Lyophilized, 0.1% sodium azide. Precaution: This product contains sodium azide: a poisonous and hazardous substance which should be handled by trained staff only.		
Purification:	Protein A purified		
Reconstitution:	Centrifuge vial prior to opening. Reconstitute to 1 mg/ml by adding 200 µl H ₂ O.		
Cross-Reactivity:	Recombinant and native rat CX ₃ CR1. Cross-reactivity to other species has not been determined.		
Storage & Stability:	2-4°C for short term storage or -20°C in small aliquots for long term storage. Avoid repeated freeze-thaw cycles.		
Applications:	Western blot: working dilution of 1:1,000-1:2,000 Immunoprecipitation: working dilution of 1:300-1:800 Immunohistochemistry: working dilution 1:100-1:500 The optimal concentration should be determined by the user for each specific application.		



NOT FOR HUMAN USE. FOR RESEARCH ONLY. NOT FOR DIAGNOSTIC OR THERAPEUTIC USE.



Cell Sciences®
 480 Neponset Street
 Bldg 12A
 Canton, MA 02021

Toll Free: 888-769-1246
 Phone: 781-828-0610
 Fax: 781-828-0542

E-mail: info@cellsciences.com
 Website: www.cellsciences.com