



**POLYCLONAL ANTIBODY**

*For research use only. Not for clinical diagnosis.*

**Catalog No. CNP- WB-128**

**Anti PACSIN2**

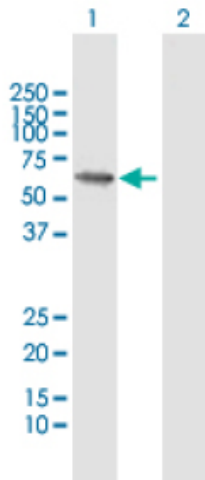
<b>Product type</b>	Primary antibodies
<b>Immunogen</b>	PACSIN2 (AAH08037.1, 1 a.a. ~ 486 a.a) full-length human protein.
<b>Form</b>	Liquid Protein A purified
<b>Volume</b>	100ul
<b>Specificity</b>	Human
<b>Host</b>	Rabbit

**Immunogen Sequence**  
 MSVTYDDSVGVEVSSDSFWEVGNKYKRTVKRIDDGHRLCSDLMNCLHERARIEKAYAQQLT  
 EWARRWRQLVEKGPQYGTVEKAWMAFMSEAERVSELHLEVKASLMNDDFEKIKNWQKEAF  
 HKQMMGGFKETKEAEDGFRKAQKPWAKKLKEVEAAKKAHHAACKEEKLAISREANSKADP  
 SLNPEQLKKLQDKIEKCKQDVLKTKKEYEKSLELDQGTQPMENMEQVFEQCQQFEER  
 LRFFREVLLLEVQKHLDSLNVAGYKAIYHDLEQSIRAADAVEDLRWFRANHGPGMAMNWPQ  
 FEEWSADLNRTLRSREKKKATDGVTLTGINQTDGQSLPSKPSSTLNVPSNPAQSAQSQSS  
 YNPFEDDDTGSTVSEKDDTKAKNVSSYEKTSYPTDWSDDENNPFSSTDANGDSNPF  
 DDATSGTEVRVRLYDYEGQEHDELSFKAGDELTKMEDEDEQGWCKGRLDNGQVGLYPAN  
 YVEAIQ

**Gene Alias** SDPII

**Application notes** **WB**  
 Antibody dilution: 1:1000 ~ 1:2000. Specific band of ~55.70 kDa using PACSIN2 transfected 293T lysate.

**Western Blotting (Transfected lysate)**



Western Blot analysis of PACSIN2 expression in transfected 293T cell line by PACSIN2 rabbit polyclonal antibody.

Lane 1: PACSIN2 transfected lysate(55.70 KDa).  
 Lane 2: Non-transfected lysate.

**Storage**

For continuous use, store at 2-8°C for one-two days. For extended storage, store in -20°C freezer. Working dilution samples should be discarded if not used within 12 hours.

*For research use only. Not for clinical diagnosis.*



**COSMO BIO Co., LTD.**

Inspiration for Life Science

TOYO 2CHOME, KOTO-KU, TOKYO, 135-0016, JAPAN

URL: <http://www.cosmobio.co.jp>

e-mail: [export@cosmobio.co.jp](mailto:export@cosmobio.co.jp)

[Outside Japan] Phone : +81-3-5632-9617

[国内連絡先] Phone : +81-3-5632-9610

FAX : +81-3-5632-9618

FAX : +81-3-5632-9619