

# Monoclonal Anti-mouse, human, cat, dog, sheep DC-LAMP/CD208

**Product reference: DDX0191**

**Description:**

The dendritic cell lysosomal-associated membrane protein (DC-LAMP)/CD208 is a type I integral transmembrane glycoprotein mostly homologous to CD68, of about 45 kDa in mouse and 90 kDa in human (due to extensive glycosylation), with a bipartite C-terminal structure divided by a serine/proline rich region, a transmembrane domain and a conserved tyrosine-based lysosomal targeting motif in its cytoplasmic tail. Initially cloned as a specific marker of human mature dendritic cells (DCs), DC-LAMP has been subsequently shown to be expressed in alveolar type II pneumocytes. In both cell types, DC-LAMP is found in the limiting membrane of intracellular multi-lamellar bodies, known as MIIC (MHC class II compartments) in human mature DC and as lung surfactant-containing lamellar bodies in type II pneumocytes. In the latter cell type, DC-LAMP expression is also detected at the cell surface.

(*de Saint-Vis B et al, 1998 ; Immunity ; 9: 325-336 ; Salaun B et al, 2003 ; Eur. J. Immunol., 33 :9, 2619-29 ; Salaun B et al, 2004 ; Am. J. Pathol., 164 :3, 861-71*)

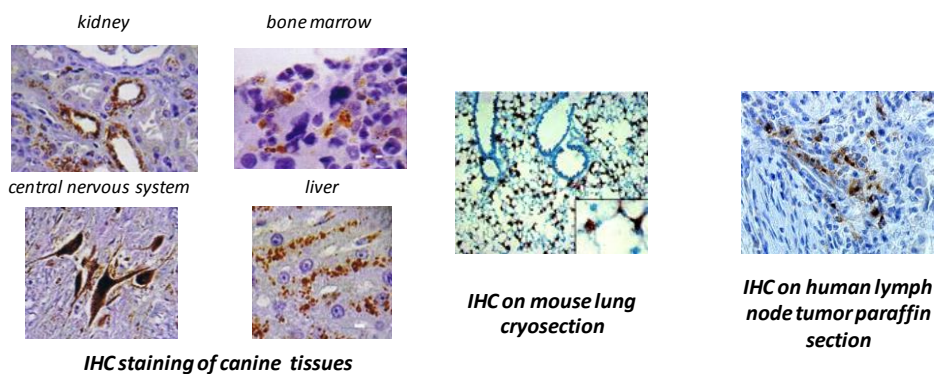
**Clone:** 1010E1.01  
**Species:** rat  
**Specificity:** murine DC-LAMP (epitope in intracytoplasmic domain)  
**Immunogen:** recombinant murine DC LAMP  
**Species cross-reactivity:** human, cat, dog, sheep, mouse  
**Isotype:** IgG2a  
**Purification:** QMA Hyper D ion exchange chromatography  
**Formulation/size:** **Purified:** 100 µg in 200µl / 50 µg in 100 µl Tris-NaCl pH 8  
**Coupled:** 100 µg in 200µl / 50 µg in 100 µl PBS 50% glycerol

**Available formats:**

Reference N°		Format	Application tested
50 µg	100 µg		
DDX0191P-50	DDX0191P-100	Purified	IHC paraffin (formol, Bouin) in human
DDX0191A488-50	DDX0191A488-100	Alexa-fluor® 488	Intra Flow cytometry, IF
DDX0191A546-50	DDX0191A546-100	Alexa- fluor® 546	IF
DDX0191A647-50	DDX0191A647-100	Alexa- fluor® 647	Intra Flow cytometry
DDX0191B-50	DDX0191B-100	Biotin ( <i>on request</i> )	Intra Flow cytometry, IHC

**Other clones available on request**

**Applications tested: IHC**



**Other application:** Flow cytometry: low intensity of staining

**Usage recommendation:** \*This monoclonal antibody may be used between 5-25 µg/ml.  
 \*Optimal dilution should be determined by each laboratory for each application.  
 \*Coupled antibody: to maintain RT before use.

**Aliquot storage conditions:** -20°C. **KEEP CONTENTS STERILE: no preservative.**  
**Purified antibodies:** avoid repeated freeze/thaw cycles.  
**Coupled antibodies:** glycerol protects from freezing.

**Not for use in Humans. For research purpose only**