

Monoclonal Anti-human, mouse DORA/IGSF6

Product reference: DDX0220

Description

Using a cDNA subtraction technique, a novel member of the immunoglobulin superfamily was isolated from human dendritic cells (DCs). This cDNA, named DORA, for Down-Regulated by Activation encodes a protein belonging to the CD8 family of receptors containing a single V type loop domain with an associated J chain region, a transmembrane region containing an atypical tyrosine residue and a cytoplasmic domain containing three putative tyrosine phosphorylation sites. The human DORA gene has been mapped to chromosome 16. Expression is observed in DCs, purified *ex vivo* or generated *in vitro* from either monocytes or CD34⁺ progenitors, and down-regulated following activation by PMA and Ionomycin or by CD40L engagement.

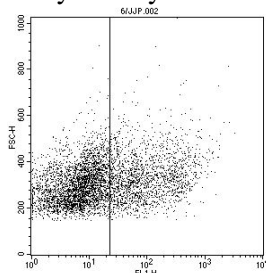
(Bates EE et al, 2000; *Immunogenetics*, 52: 112-20; Bates EE et al, 1998; *Mol. Immunology*, 35: 513-24)

Clone:	104A10.01
Species:	mouse
Specificity:	human DORA
Immunogen:	human recombinant DORA Ig fusion protein
Species cross-reactivity:	mouse
Isotype:	IgG1
Purification:	QMA Hyper D ion exchange chromatography
Formulation/size:	Purified: 100 µg in 200 µl / 50 µg in 100 µl Tris-NaCl pH 8
	Coupled: 100 µg in 200 µl / 50 µg in 100 µl PBS 50% glycerol

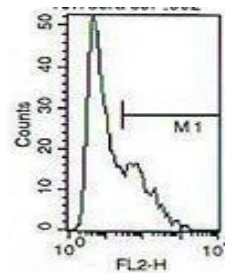
Available formats:

Reference N°		Format	Application tested
50 µg	100 µg		
DDX0220P-50	DDX0220P-100	Purified	Flow cytometry surface, WB
DDX0220A488-50	DDX0220A488-100	Alexa-fluor®488 (on request)	Flow cytometry surface, WB
DDX0220A546-50	DDX0220A546-100	Alexa-fluor®546 (on request)	Flow cytometry surface, WB
DDX0220A647-50	DDX0220A647-100	Alexa-fluor®647 (on request)	Flow cytometry surface, WB
DDX0220B-50	DDX0220B-100	Biotin (on request)	Flow cytometry surface, WB

Applications tested: Flow cytometry



FACS staining of **human** DORA – transfected COP5 cells



FACS staining of **murine** DORA – transfected COP5 cells

Usage recommendation:

- *This monoclonal antibody may be used between 5-15 µg/ml.
- *Optimal dilution should be determined by each laboratory for each application.
- *Coupled antibody: to maintain RT before use.

Aliquot storage conditions:

- 20°C. KEEP CONTENTS STERILE: no preservative.**
- Purified antibodies: avoid repeated freeze/thaw cycles.**
- Coupled antibodies: glycerol protects from freezing.**

Not for use in Humans. For research purpose only