



## DIACLONE Immunology Products

### Isotope Control IgG2a PerCP Conjugated

Clone: B-Z2

<b>CATALOGUE N° :</b>	857.088.010
<b>CLONE :</b>	B-Z2
<b>ISOTYPE :</b>	Mouse IgG2a
<b>IMMUNISATION :</b>	Rat monocytes and macrophages
<b>HYBRIDOMA :</b>	Myeloma X63/AG.8653 x Balb/c spleen cells
<b>QUANTITY :</b>	100 tests / 1 ml
<b>PURIFICATION :</b>	Ion exchange chromatography
<b>FORMAT :</b>	Phosphate-buffered saline with 5 % BSA and 0.1 % sodium azide
<b>WORKING DILUTION :</b>	Use 10 µl to label 0,5.10 <sup>6</sup> cells or 50 µl of whole blood
<b>STORAGE :</b>	Stable at +2-8°C for 12 months DO NOT FREEZE
<b>APPLICATION :</b>	Suitable for flow cytometry

#### 20 YEARS OF EXPERTISE

With over 20 years experience and extensive expertise we are committed to providing excellence in Monoclonal Antibody and Immunoassay development.

The expanding range of Diacclone Immunology products is specifically designed to advance research applications.

Our experience and expertise coupled to the diversity of our product range makes Diacclone a clear choice to

#### Fast Track Your Research...

#### DIACLONE PRODUCTS



Monoclonal Antibodies



ELISA



ELISpot



DIAPlex

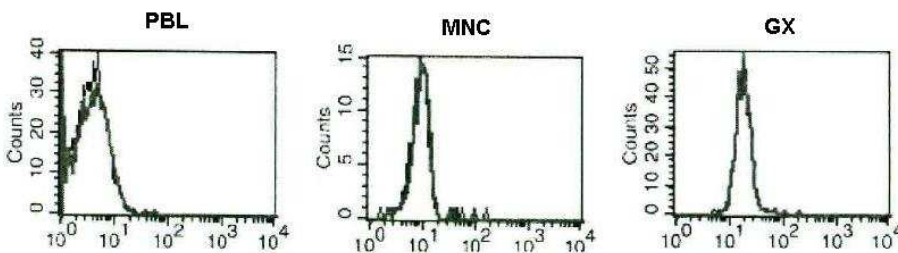
#### GLOBAL DISTRIBUTION

For the USA please contact our distributor


Cell Sciences, Tel: 888-769-1246

email: [info@cellsciences.com](mailto:info@cellsciences.com)

For all other countries please visit our website for a full list of our distributors.



A typical staining pattern with B-Z2 monoclonal antibody of blood cells

 Sodium azide is a poisonous and hazardous substance, handle and dispose of properly

Version 1 - 05.10

For research use only