



**Proteolipid Protein 1, Myelin Antibody  
ELISA Kit (Human)  
(OKCD01284)  
Instructions for use**

For the quantitative measurement of Proteolipid Protein 1, Myelin antibody in serum, plasma and other biological fluids.

This product is intended for research use only.

Lot to lot kit variations can occur. Use the kit manual which has been provided along with the kit packaging.

## Table of Contents

1. Background .....	2
2. Assay Summary .....	2
3. Precautions .....	4
4. Storage and Stability .....	3
5. Kit Components .....	3
6. Required Materials Not Supplied .....	4
7. Technical Application Tips .....	4
8. Reagent Preparation .....	5
9. Sample Preparation .....	7
10. Assay Procedure .....	8
11. Calculation of Results .....	9
12. Typical Expected Data .....	9
13. Technical Resources .....	11

## 1. Background

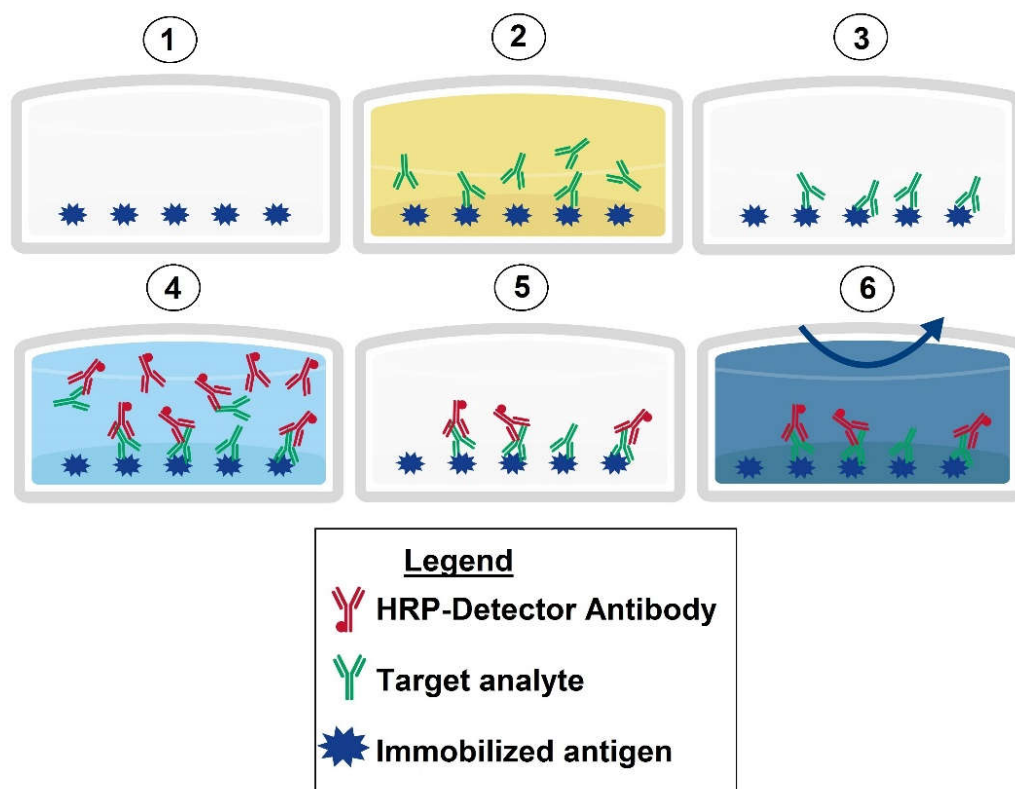
### Principle

Aviva Systems Biology Proteolipid Protein 1, Myelin Antibody ELISA Kit (Human) (OKCD01284) is based on standard reverse capture sandwich enzyme-linked immuno-sorbent assay technology. A Proteolipid Protein 1, Myelin antigen has been pre-coated and blocked in a 96-wellplate (12 x 8 Well Strips). Standards or test samples are added to the wells, incubated and removed. An HRP conjugated detector antibody specific for Human antibody is added, incubated and followed by washing. An enzymatic reaction is produced through the addition of TMB substrate which is catalyzed by HRP generating a blue color product that changes to yellow after adding acidic stop solution. The density of yellow coloration is read by absorbance at 450 nm and is quantitatively proportional to the amount of sample PLP1 Antibody captured in well.

### General Specifications

General Specifications	
Range	3.12-200 ng/mL
LOD	< 1.12 ng/mL (Derived by linear regression of OD <sub>450</sub> of the Mean Blank + 2xSD)
Specificity	Human Proteolipid Protein 1, Myelin antibody UniProt ID of antibody target: P60201 Target Alias of antibody target: PLP1, HLD1, Lipophilin, MMPL, Myelin proteolipid protein, PLP, PLP/DM20, PMD, SPG2
Cross-Reactivity	No detectable cross-reactivity with other relevant proteins

## 2. Assay Summary



## 3. Storage and Stability

- Upon receipt store kit at 4°C for 6 months or -20°C for long term storage (exceptions noted below). Avoid any freeze/thaw cycles.

## 4. Kit Components

- The following reagents are the provided contents of the kit.

Description	Quantity	Storage Conditions
Proteolipid Protein 1, Myelin antibody Microplate	96 Wells (12 x 8 Well strips)	4°C for 6 Months -20°C for 12 Months
Proteolipid Protein 1, Myelin antibody Lyophilized	2 x 200 ng	
100X Detector Antibody	1 x 120 µL	
Standard Diluent	1 x 20 mL	
Detector Antibody Diluent	1 x 12 mL	
30X Wash Buffer	1 x 20 mL	Store at 4°C for 12 Months
Stop Solution	1 x 6 mL	
TMB Substrate	1 x 9 mL	

## 5. Precautions

- Read instructions fully prior to beginning use of the assay kit.
- Any deviations or modifications from the described method or use of other reagents could result in a reduction of performance.
- Reduce exposure to potentially harmful substances by wearing personal protective lab equipment including lab coats, gloves and glasses.
- For information on hazardous substances included in the kit please refer to the Material Safety Data Sheet (MSDS).
- Kit cannot be used beyond the expiration date on the label.

## 6. Required Materials Not Supplied

- Microplate reader capable of reading absorbance at 450 nm.
- Automated plate washer (optional).
- Pipettes capable of precisely dispensing 0.5  $\mu$ L through 1 mL volumes of aqueous solutions.
- Pipettes or volumetric glassware capable of precisely measuring 1 mL through 100 mL of aqueous solutions.
- New, clean tubes and/or micro-centrifuge tubes for the preparation of standards or samples.
- Absorbent paper or paper toweling.
- Distilled or deionized ultrapure water.
- 37°C Incubator (optional)

## 7. Technical Application Tips

- Do not mix or substitute components from other kits.
- To ensure the validity of experimental operation, it is recommended that pilot experiments using standards and a small selection of sample dilutions to ensure optimal dilution range for quantitation.
- Samples exhibiting OD measurements higher than the highest standard should be diluted further in the appropriate sample dilution buffers.
- Prior to using the kit, briefly spin component tubes to collect all reagents at the bottom.
- Replicate wells are recommended for standards and samples.
- Cover microplate while incubating to prevent evaporation.
- Do not allow the microplate wells dry at any point during the assay procedure.
- Do not reuse tips or tube to prevent cross contamination.
- Avoid causing bubbles or foaming when pipetting, mixing or reconstituting.
- Completely remove of all liquids when washing to prevent cross contamination.
- Prepare reagents immediately prior to use and do not store, with the exception of the top standard.
- Equilibrate all materials to ambient room temperature prior to use (standards exception).
- For optimal results for inter- and intra-assay consistency, equilibrate all materials to 37°C prior to performing assay (standards exception) and perform all incubations at 37°C.
- Pipetting less than 1  $\mu$ L is not recommended for optimal assay accuracy.
- Once the procedure has been started, all steps should be completed without interruption. Ensure that all reagents, materials and devices are ready at the appropriate time.
- Incubation times will affect results. All wells should be handled in the same sequential order and time intervals for optimal results.
- Samples containing precipitates, fibrin strands or bilirubin, or are hemolytic or lipemic might cause inaccurate results due to interfering factors.
- TMB Substrate is easily contaminated and should be colorless or light blue until added to plate. Handle carefully and protect from light.

## 8. Reagent Preparation

- Equilibrate all materials to room temperature prior to use and use prepare immediately prior to use.

### 8.1 Human PLP1 Antibody Assay Standards

- 8.1.1 Prepare the PLP1 Antibody standards no greater than 2 hours prior to performing experiment. Standards should be held on ice until use in the experiment.
- 8.1.2 Reconstitute one vial of the provided 200 ng **Lyophilized Standard** for each experiment. Prepare a stock **200 ng/mL Standard** by reconstituting one tube of 200 ng **Lyophilized Standard** as follows:
  - 8.1.2.1 Gently spin or tap the vial at 6,000 – 10,000 rpm for 30 seconds to collect all material at the bottom.
  - 8.1.2.2 Add 1.0 mL of **Standard Diluent** to the vial.
  - 8.1.2.3 Seal the vial then mix gently and thoroughly.
  - 8.1.2.4 Leave the vial at ambient temperature for 15 minutes.
- 8.1.3 Prepare a set of serially diluted standards as follows:
  - 8.1.3.1 Label tubes with numbers 2 – 8.
  - 8.1.3.2 Use the undiluted reconstituted **200 ng/mL Standard** from step 8.1.2 as the high standard point (Tube #1).
  - 8.1.3.3 Add 300 µL of **Standard Diluent** to Tube #'s 2 – 8.
  - 8.1.3.4 Prepare **Standard #2** by adding 300 µL of **200 ng/mL Standard** (Tube #1) to Tube #2. Mix gently and thoroughly.
  - 8.1.3.5 Prepare **Standard #3** by adding 300 µL of **Standard #2** from Tube #2 to Tube #3. Mix gently and thoroughly.
  - 8.1.3.6 Prepare further serial dilutions through Tube #7. Reference the table below as a guide for serial dilution scheme.
  - 8.1.3.7 Tube #8 is a blank standard (only **Standard Diluent**), which should be included with every experiment.

Standard Number (Tube)	Standard To Dilute	Volume Standard to Dilute (µL)	Volume Standard Diluent Buffer (µL)	Total Volume (µL)	Final Concentration
1	200 ng/mL Reconstituted Standard	NA	NA	NA	200 ng/mL
2	200 ng/mL	300	300	600	100 ng/mL
3	100 ng/mL	300	300	600	50 ng/mL
4	50 ng/mL	300	300	600	25 ng/mL
5	25 ng/mL	300	300	600	12.5 ng/mL
6	12.5 ng/mL	300	300	600	6.25 ng/mL
7	6.25 ng/mL	300	300	600	3120 pg/mL
8	NA	0	300	300	0.0 (Blank)



## 8.2 **1X Detector Antibody**

- 8.2.1 Prepare the **1X Detector Antibody** immediately prior to use by diluting the **100X Detector Antibody** 1:100 with **Detector Antibody Diluent**.
- 8.2.2 For each well strip to be used in the experiment (8-wells) prepare 1,000 µL of **1X Detector Antibody** by adding 10 µL of **100X Detector Antibody** to 990 µL **Detector Antibody Diluent**.
- 8.2.3 Mix thoroughly and gently. Hold no longer than 2 hours prior to using in procedure. Do not store at 1X concentration for future use.

## 8.3 **1X Wash Buffer**

- 8.3.1 If crystals have formed in the **30X Wash Buffer** concentrate, equilibrate to room temperature and mix gently until crystals have completely dissolved.
- 8.3.2 Add the entire 20 mL contents of the **30X Wash Buffer** bottle to 580 mL of ultra-pure water to a clean > 1,000 mL bottle or other vessel.
- 8.3.3 Seal and mix gently by inversion. Avoid foaming or bubbles.
- 8.3.4 Store the **1X Wash Buffer** at room temperature until ready to use in the procedure. Store the prepared **1X Wash Buffer** at 4°C for no longer than 1 week. Do not freeze.

## 8.4 **Microplate Preparation**

- Micro-plates are provided ready to use and do not require rinsing or blocking.
- Unused well strips should be returned to the original packaging, sealed and stored at 4°C.
- Equilibrate microplates to ambient temperatures prior to opening to reduce potential condensation.

## 9. Sample Preparation

### 9.1 Sample Preparation and Storage

- Store samples to be assayed at 2-8°C for 24 hours prior being assayed.
- For long term storage, aliquot and freeze samples at -20°C. Avoid repeated freeze-thaw cycles.
- Samples not indicated in the manual must be tested to determine if the kit is valid.
- Prepare samples as follows:
  - Serum - Use a serum separator tube (SST) and allow samples to clot for two hours at room temperature or overnight at 4°C before centrifugation for 15 minutes at 1,000 x g. Remove serum and assay immediately or aliquot and store samples at -20°C or -80°C. Avoid repeated freeze-thaw cycles.
  - Plasma - Collect plasma using EDTA, or heparin as an anticoagulant. Centrifuge for 15 minutes at 1,000 x g at 2-8°C within 30 minutes of collection. Assay immediately or aliquot and store samples at -20°C or -80°C. Avoid repeated freeze-thaw cycles.
  - other biological fluids – Centrifuge samples for 20 minutes at 1,000 x g. Collect the supernant and assay immediately or store samples in aliquot at -20°C or -80°C for later use. Avoid repeated freeze/thaw cycles.

### 9.2 Sample Dilution

Target protein concentration must be estimated and appropriate sample dilution selected such that the final target protein concentration falls near the middle of the assay linear dynamic range. Samples exhibiting saturation should be further diluted.

- Dilute samples using **Standard Diluent**.
- Mix diluted samples gently and thoroughly.
- Pipetting less than 2 µL is not recommended for optimal assay accuracy.



## 10. Assay Procedure

- Equilibrate all reagents and materials to ambient room temperature prior to use in the procedure.
- Optimal results for intra- and inter-assay reproducibility will be obtained when performing incubation steps at 37°C as indicated below.

- 10.1** Determine the required number of wells and return any remaining unused wells and desiccant to the pouch.
- 10.2** Add 100 µL of serially titrated standards, diluted samples or blank into wells of the **PLP1 Antibody Microplate**. At least two replicates of each standard, sample or blank is recommended.
- 10.3** Cover the plate with the well plate lid and incubate at 37°C for 2 hours.
- 10.4** Remove the plate lid and discard the liquid in the wells by rigorously flicking into an acceptable waste receptacle or aspiration.
- 10.5** Gently blot any remaining liquid from the wells by tapping inverted on the benchtop onto paper toweling. Do not allow the wells to completely dry at any time.
- 10.6** Add 100 µL of prepared **1X Detector Antibody** to each well.
- 10.7** Cover with the well-plate lid and incubate at 37°C for 60 minutes.
- 10.8** Discard the liquid in the wells by rigorously flicking into an acceptable waste receptacle or aspiration.
- 10.9** Gently blot any remaining liquid from the wells by tapping inverted on the benchtop onto paper toweling. Do not allow the wells to completely dry at any time.
- 10.10** Wash plate 5 times with **1X Wash Buffer** as follows:
  - 10.10.1 Add 300 µL of **1X Wash Buffer** to each assay well.
  - 10.10.2 Incubate for 1 minute.
  - 10.10.3 Discard the liquid in the wells by rigorously flicking into an acceptable waste receptacle.
  - 10.10.4 Gently blot any remaining liquid from the wells by tapping inverted on the benchtop onto paper toweling. Do not allow the wells to completely dry at any time.
  - 10.10.5 Repeat steps 10.10.1 through 10.10.4 **four** more times.
- 10.11** Add 90 µL of **TMB Substrate** to each well and incubate at 37°C **in the dark** for 15-25 minutes. Wells should change to gradations of blue. If the color is too deep, reduce the incubation time.  
(NOTE: optimal incubation time must be determined by the user. Optimal development can be visualized by blue shading in the top four standard wells, while the remaining standards are still clear.)
- 10.12** Add 50 µL of **Stop Solution** to each well. Well color should change to yellow immediately. Add the **Stop Solution** in the same well order as done for the **TMB Substrate**. Gently tap the plate to mix.
- 10.13** Read the O.D. absorbance at 450 nm with a standard microplate reader within 5 minutes of stopping the reaction in step 10.16. If wavelength correction is available, set to 540 nm or 570 nm.

## 11. Calculation of Results

For analysis of the assay results, calculate the **Relative OD<sub>450</sub>** for each test or standard well as follows:

$$(\text{Relative OD}_{450}) = (\text{Well OD}_{450}) - (\text{Mean Blank Well OD}_{450})$$

The standard curve is generated by plotting the mean replicate **Relative OD<sub>450</sub>** of each standard serial dilution point vs. the respective standard concentration. The **PLP1 Antibody** concentration contained in the samples can be interpolated by using linear regression of each mean sample **Relative OD<sub>450</sub>** against the standard curve. This is best achieved using curve fitting software.

**Note:** If wavelength correction readings were available, subtract the readings at 540 nm or 570 nm from the readings at 450 nm. This may provide greater reading accuracy.

**Note:** If the samples measured were diluted, multiply the derived mean sample concentration by the dilution factor for a final sample concentration.

## 12. Typical Expected Data

### 12.1 Reproducibility

Intra-assay Precision: 3 samples with known low, middle and high levels PLP1 Antibody were tested with 20 replicates on one plate, respectively.

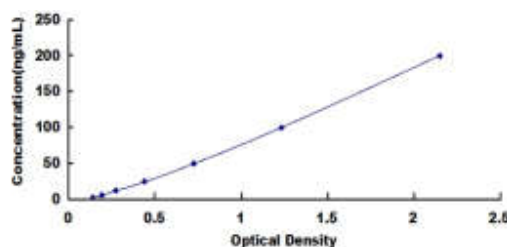
Inter-assay Precision: 3 samples with known low, middle and high level PLP1 Antibody were tested on 3 different plates, 8 replicates in each plate.

Mean Intra-Assay: CV  $\leq$  10%

Mean Inter-Assay: CV  $\leq$  12%

### 12.2 Typical standard curve

This standard curve is for demonstration purposes only. An assay specific standard curve should be performed with each assay.



### 12.3 Linearity

Kit linearity evaluated by testing serially diluted samples containing known concentrations of PLP1 Antibody. Results are expressed as the percentage of the expected concentration measurement.

Sample Type	Dilution Level			
	1:2	1:4	1:8	1:16
Serum (n=5)	80-91%	84-101%	84-92%	96-105%
EDTA Plasma (n=5)	87-95%	90-98%	93-105%	78-97%
Heparin Plasma (n=5)	88-103%	84-101%	90-99%	79-95%

### 12.4 Recovery

The following matrices were spiked to known concentrations using recombinant PLP1 Antibody. Recovery is expressed as the percentage of the expected concentration measurement.

Sample Type	Recovery range (%)	Average(%)
Serum (n=5)	79-91	85
EDTA Plasma (n=5)	90-99	94
Heparin Plasma (n=5)	78-91	87

## 13. Technical Resources

### Technical Support:

For optimal service please be prepared to supply the lot number of the kit used.

#### USA

Aviva Systems Biology, Corp.  
5754 Pacific Center Blvd, Suite 201  
San Diego, CA 92121

Phone: 858-552-6979  
Toll Free: 888-880-0001  
Fax: 858-552-6975

Technical support: [techsupport@avivasysbio.com](mailto:techsupport@avivasysbio.com)

#### China

Beijing AVIVA Systems Biology  
6th Floor, B Building, Kaichi Tower  
#A-2 Jinfu Road.  
Daxing Industrial Development Zone  
Beijing, 102600, CHINA

Phone: (86)10-60214720  
Fax: (86)10-60214722  
E-mail: [support@avivasysbio.com.cn](mailto:support@avivasysbio.com.cn)

中国地址: 北京大兴工业开发区金辅路甲 2 号凯驰大厦 B 座 6 层 (102600)  
电话: 010-60214720/21  
传真: 010-60214722

产品售前咨询及销售: [sales@avivasysbio.com.cn](mailto:sales@avivasysbio.com.cn)  
售后及技术支持: [support@avivasysbio.com.cn](mailto:support@avivasysbio.com.cn)