



## **SIRT2 ELISA Kit (Rat) (OKCD06339)**

### **Instructions for use**

For the quantitative measurement of SIRT2 in Tissue homogenates, cell lysates,  
cell culture supernates and other biological fluids

Lot to lot kit variations can occur. Refer to the manual provided with the kit.

This product is intended for research use only.

## Table of Contents

1. <a href="#">Background</a>	2
2. <a href="#">Assay Summary</a>	3
3. <a href="#">Storage and Stability</a>	3
4. <a href="#">Kit Components</a>	3
5. <a href="#">Precautions</a>	4
6. <a href="#">Required Materials Not Supplied</a>	4
7. <a href="#">Technical Application Tips</a>	4
8. <a href="#">Reagent Preparation</a>	5
9. <a href="#">Sample Preparation</a>	7
10. <a href="#">Assay Procedure</a>	8
11. <a href="#">Calculation of Results</a>	9
12. <a href="#">Typical Expected Data</a>	9
13. <a href="#">Technical Resources</a>	11

## 1. Background

### Principle

Aviva Systems Biology SIRT2 ELISA Kit (Rat) (OKCD06339) is based on standard sandwich enzyme-linked immuno-sorbent assay technology. An antibody specific for SIRT2 has been pre-coated onto a 96-wellplate (12 x 8 Well Strips). Standards or test samples are added to the wells, incubated and removed. A biotinylated detector antibody specific for SIRT2 is added, incubated and followed by washing. Avidin-Peroxidase Conjugate is then added, incubated and unbound conjugate is washed away. An enzymatic reaction is produced through the addition of TMB substrate which is catalyzed by HRP generating a blue color product that changes to yellow after adding acidic stop solution. The density of yellow coloration is read by absorbance at 450 nm and is quantitatively proportional to the amount of sample SIRT2 captured in well.

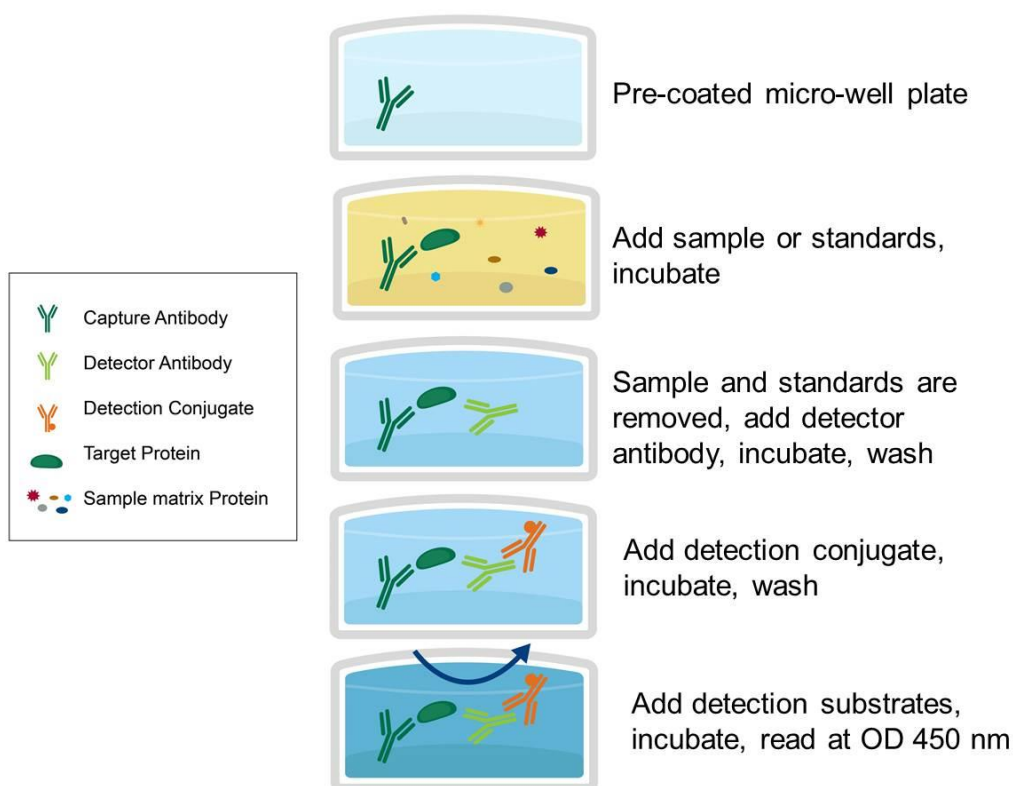
### Background

NAD-dependent protein deacetylase, which deacetylates internal lysines on histone and alpha-tubulin as well as many other proteins such as key transcription factors. Participates in the modulation of multiple and diverse biological processes such as cell cycle control, genomic integrity, microtubule dynamics, cell differentiation, metabolic networks, and autophagy. Plays a major role in the control of cell cycle progression and genomic stability. Functions in the antephasic checkpoint preventing precocious mitotic entry in response to microtubule stress agents, and hence allowing proper inheritance of chromosomes. Positively regulates the anaphase promoting complex/cyclosome (APC/C) ubiquitin ligase complex activity by deacetylating CDC20 and FZR1, then allowing progression through mitosis. Associates with both chromatin at transcriptional start sites (TSSs) and enhancers of active genes. Plays a role in cell cycle and chromatin compaction through epigenetic modulation of the regulation of histone H4 'Lys-20' methylation (H4K20me1) during early mitosis. Specifically deacetylates histone H4 at 'Lys-16' (H4K16ac) between the G2/M transition and metaphase enabling H4K20me1 deposition by KMT5A leading to ulterior levels of H4K20me2 and H4K20me3 deposition throughout cell cycle, and mitotic S-phase progression. Deacetylates KMT5A modulating KMT5A chromatin localization during the mitotic stress response. Deacetylates also histone H3 at 'Lys-57' (H3K56ac) during the mitotic G2/M transition. During oocyte meiosis progression, may deacetylate histone H4 at 'Lys-16' (H4K16ac) and alpha-tubulin, regulating spindle assembly and chromosome alignment by influencing microtubule dynamics and kinetochore function. Deacetylates alpha-tubulin at 'Lys-40' and hence controls neuronal motility, oligodendroglial cell arbor projection processes and proliferation of non-neuronal cells. Phosphorylation at Ser-330 by a G1/S-specific cyclin E-CDK2 complex inactivates SIRT2-mediated alpha-tubulin deacetylation, negatively regulating cell adhesion, cell migration and neurite outgrowth during neuronal differentiation. Deacetylates PARD3 and participates in the regulation of Schwann cell peripheral myelination formation during early postnatal development and during postinjury remyelination. Involved in several cellular metabolic pathways. Plays a role in the regulation of blood glucose homeostasis by deacetylating and stabilizing phosphoenolpyruvate carboxykinase PCK1 activity in response to low nutrient availability. Acts as a key regulator in the pentose phosphate pathway (PPP) by deacetylating and activating the glucose-6-phosphate G6PD enzyme, and therefore, stimulates the production of cytosolic NADPH to counteract oxidative damage. Maintains energy homeostasis in response to nutrient deprivation as well as energy expenditure by inhibiting adipogenesis and promoting lipolysis. Attenuates adipocyte differentiation by deacetylating and promoting FOXO1 interaction to PPARG and subsequent repression of PPARG-dependent transcriptional activity. Plays a role in the regulation of lysosome-mediated degradation of protein aggregates by autophagy in neuronal cells. Deacetylates FOXO1 in response to oxidative stress or serum deprivation, thereby negatively regulating FOXO1-mediated autophagy. Deacetylates a broad range of transcription factors and co-regulators regulating target gene expression. Deacetylates transcriptional factor FOXO3 stimulating the ubiquitin ligase SCF(SKP2)-mediated FOXO3 ubiquitination and degradation. Deacetylates HIF1A and therefore promotes HIF1A degradation and inhibition of HIF1A transcriptional activity in tumor cells in response to hypoxia. Deacetylates RELA in the cytoplasm inhibiting NF-kappaB-dependent transcription activation upon TNF-alpha stimulation. Inhibits transcriptional activation by deacetylating p53/TP53 and EP300. Deacetylates also EIF5A. Functions as a negative regulator on oxidative stress-tolerance in response to anoxia-reoxygenation conditions. Plays a role as tumor suppressor.<sup>3 Publications</sup>

## General Specifications

General Specifications	
Range	1.56-100ng/mL
LOD	< 0.66ng/mL (Derived by linear regression of OD <sub>450</sub> of the Mean Blank + 2xSD)
Specificity	<p>SIRT2</p> <p><u>UniProt ID:</u> Q5RJQ4</p> <p><u>GeneID:</u> 361532</p> <p><u>Target Alias:</u> SIR2L; SIR2-L; SIR2L2; Silent Information Regulator 2 Protein; NAD-Dependent Deacetylase Sirtuin-2; Silent Mating Type Information Regulation 2 Homolog</p>
Cross-Reactivity	No detectable cross-reactivity with other relevant proteins

## 2. Assay Summary



## 3. Storage and Stability

- Open kit immediately upon receipt. Store components at -20°C (NOTE: exceptions below) for 6 months or until expiration date. Avoid any freeze/thaw cycles.

## 4. Kit Components

- The following reagents are the provided contents of the kit.

Description	Quantity	Storage Conditions
Anti-SIRT2 Microplate	96 Wells (12 x 8 Well strips)	-20°C for 6 Months
SIRT2 Lyophilized Standard	2 x	
100X Biotinylated SIRT2 Detector Antibody	1 x 120 µL	
100X Avidin-HRP Conjugate	1 x 120 µL	
Standard Diluent	1 x 20 mL	
Detector Antibody Diluent	1 x 12 mL	4°C for 6 Months
Conjugate Diluent	1 x 12 mL	
30X Wash Buffer	1 x 20 mL	
Stop Solution	1 x 10 mL	
TMB Substrate	1 x 10 mL	

## 5. Precautions

- Read instructions fully prior to beginning use of the assay kit.
- Any deviations or modifications from the described method or use of other reagents could result in a reduction of performance.
- Reduce exposure to potentially harmful substances by wearing personal protective lab equipment including lab coats, gloves and glasses.
- For information on hazardous substances included in the kit please refer to the Material Safety Data Sheet (MSDS).
- Kit cannot be used beyond the expiration date on the label.

## 6. Required Materials Not Supplied

- Microplate reader capable of reading absorbance at 450 nm.
- Automated plate washer (optional).
- Pipettes capable of precisely dispensing 0.5 µL through 1 mL volumes of aqueous solutions.
- Pipettes or volumetric glassware capable of precisely measuring 1 mL through 100 mL of aqueous solutions.
- New, clean tubes and/or micro-centrifuge tubes for the preparation of standards or samples.
- Absorbent paper or paper toweling.
- Distilled or deionized ultrapure water.
- 37°C Incubator (optional)

## 7. Technical Application Tips

- Do not mix or substitute components from other kits.
- To ensure the validity of experimental operation, it is recommended that pilot experiments using standards and a small selection of sample dilutions to ensure optimal dilution range for quantitation.
- Samples exhibiting OD measurements higher than the highest standard should be diluted further in the appropriate sample dilution buffers.
- Prior to using the kit, briefly spin component tubes to collect all reagents at the bottom.
- Replicate wells are recommended for standards and samples.
- Cover microplate while incubating to prevent evaporation.
- Do not allow the microplate wells dry at any point during the assay procedure.
- Do not reuse tips or tube to prevent cross contamination.

- Avoid causing bubbles or foaming when pipetting, mixing or reconstituting.
- Completely remove of all liquids when washing to prevent cross contamination.
- Prepare reagents immediately prior to use and do not store, with the exception of the top standard.
- Equilibrate all materials to ambient room temperature prior to use (standards exception).
- For optimal results for inter- and intra-assay consistency, equilibrate all materials to 37°C prior to performing assay (standards exception) and perform all incubations at 37°C.
- Pipetting less than 1 µL is not recommended for optimal assay accuracy.
- Once the procedure has been started, all steps should be completed without interruption. Ensure that all reagents, materials and devices are ready at the appropriate time.
- Incubation times will affect results. All wells should be handled in the same sequential order and time intervals for optimal results.
- Samples containing precipitates, fibrin strands or bilirubin, or are hemolytic or lipemic might cause inaccurate results due to interfering factors.
- TMB Substrate is easily contaminated and should be colorless or light blue until added to plate. Handle carefully and protect from light.

## 8. Reagent Preparation

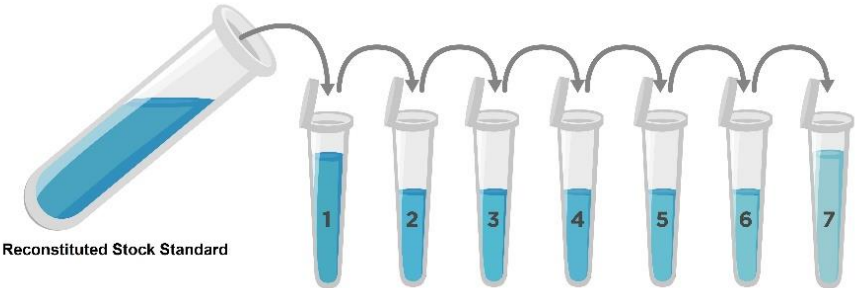
- Equilibrate all materials to room temperature prior to use and use prepare immediately prior to use.

### 8.1 Rat SIRT2 Assay Standards

- 8.1.1 Prepare the SIRT2 standards no greater than 2 hours prior to performing experiment. Standards should be held on ice until use in the experiment.
- 8.1.2 Reconstitute one vial of the provided 4 ng **Lyophilized Standard** for each experiment. Prepare a stock **4,000 pg/mL Standard** by reconstituting one tube of **Lyophilized Standard** as follows:
  - 8.1.2.1 Gently spin or tap the vial at 6,000 – 10,000 rpm for 30 seconds to collect all material at the bottom.
  - 8.1.2.2 Add 1 mL of **Standard Diluent** to the vial.
  - 8.1.2.3 Seal the vial then mix gently and thoroughly.
  - 8.1.2.4 Leave the vial at ambient temperature for 15 minutes.
- 8.1.3 Prepare a set of serially diluted standards as follows:
  - 8.1.3.1 Label tubes with numbers 1 – 8.
  - 8.1.3.2 Add 300 µL of **Standard Diluent** to Tube #'s 2 – 8.
  - 8.1.3.3 Prepare a **2,000 pg/mL Standard #1** by adding 500 µL of **4,000 pg/mL Standard** to 500 µL of **Standard Diluent** in Tube #1. Mix gently and thoroughly.
  - 8.1.3.4 Prepare **Standard #2** by adding 300 µL of **Standard #1** (Tube #1) to Tube #2. Mix gently and thoroughly.
  - 8.1.3.5 Prepare **Standard #3** by adding 300 µL of **Standard #2** from Tube #2 to Tube #3. Mix gently and thoroughly.
  - 8.1.3.6 Prepare further serial dilutions through Tube #7. Reference the table below as a guide for serial dilution scheme.
  - 8.1.3.7 Tube #8 is a blank standard (only **Standard Diluent**), which should be included with every experiment.

Standard Number (Tube)	Standard To Dilute	Volume Standard to Dilute (µL)	Volume Standard Diluent (µL)	Total Volume (µL)	Final Concentration
1	2,000 pg/mL Reconstituted SIRT2 Standard	NA	NA	NA	2,000 pg/mL
2	2,000 pg/mL	300	300	600	1,000 pg/mL
3	1,000 pg/mL	300	300	600	500 pg/mL
4	500 pg/mL	300	300	600	250 pg/mL

5	250 pg/mL	300	300	600	125 pg/mL
6	125 pg/mL	300	300	600	62.5 pg/mL
7	62.5 pg/mL	300	300	600	31.25 pg/mL
8	NA	0	300	300	0.0 (Blank)



## 8.2 **1X Biotinylated SIRT2 Detector Antibody**

- 8.2.1 Prepare the **1X Biotinylated SIRT2 Detector Antibody** immediately prior to use by diluting the **100X Biotinylated SIRT2 Detector Antibody** 1:100 with **Detector Antibody Diluent**.
- 8.2.2 For each well strip to be used in the experiment (8-wells) prepare 1,000  $\mu\text{L}$  by adding 10  $\mu\text{L}$  of **100X Biotinylated SIRT2 Detector Antibody** to 990  $\mu\text{L}$  **Detector Antibody Diluent**.
- 8.2.3 Mix thoroughly and gently. Hold no longer than 2 hours prior to using in procedure. Do not store at 1X concentration for future use.

## 8.3 **1X Avidin-HRP Conjugate**

- 8.3.1 Prepare the **1X Avidin-HRP Conjugate** immediately prior to use by diluting the **100X Avidin-HRP Conjugate** 1:100 with **Conjugate Diluent**.
- 8.3.2 For each well strip to be used in the experiment (8-wells) prepare 1,000  $\mu\text{L}$  by adding 10  $\mu\text{L}$  of **100X Avidin-HRP Conjugate** to 990  $\mu\text{L}$  **Conjugate Diluent**.
- 8.3.3 Mix thoroughly and gently. Hold no longer than 2 hours prior to using in procedure. Do not store at 1X concentration for future use.

## 8.4 **1X Wash Buffer**

- 8.4.1 If crystals have formed in the **30X Wash Buffer** concentrate, equilibrate to room temperature and mix gently until crystals have completely dissolved.
- 8.4.2 Add the entire 20 mL contents of the **30X Wash Buffer** bottle to 580 mL of ultra-pure water to a clean > 1,000 mL bottle or other vessel.
- 8.4.3 Seal and mix gently by inversion. Avoid foaming or bubbles.
- 8.4.4 Store the **1X Wash Buffer** at room temperature until ready to use in the procedure. Store the prepared **1X Wash Buffer** at 4°C for no longer than 1 week. Do not freeze.

## 8.5 **Microplate Preparation**

- Micro-plates are provided ready to use and do not require rinsing or blocking.
- Unused well strips should be returned to the original packaging, sealed and stored at 4°C.
- Equilibrate microplates to ambient temperatures prior to opening to reduce potential condensation.



## 9. Sample Preparation

### 9.1 Sample Preparation and Storage

- Store samples to be assayed at 2-8°C for 24 hours prior being assayed.
- For long term storage, aliquot and freeze samples at -20°C. Avoid repeated freeze-thaw cycles.
- Samples not indicated in the manual must be tested to determine if the kit is valid.
- Prepare samples as follows:
  - **Serum** - Use a serum separator tube (SST) and allow samples to clot for two hours at room temperature or overnight at 4°C before centrifugation for 15 minutes at 1,000 x g. Remove serum and assay immediately or aliquot and store samples at -20°C or -80°C. Avoid repeated freeze-thaw cycles.
  - **Plasma** - Collect plasma using EDTA, or heparin as an anticoagulant. Centrifuge for 15 minutes at 1,000 x g at 2-8°C within 30 minutes of collection. Assay immediately or aliquot and store samples at -20°C or -80°C. Avoid repeated freeze-thaw cycles.
  - **Tissue Homogenates** – Rinse 100 mg of tissue with 1X PBS, then homogenize in 1 mL of 1X PBS and store overnight at -20°C. Perform two freeze-thaw cycles to break the cell membranes, then centrifuge the homogenate for 5 minutes at 5,000 x g, 2-8°C. Remove the supernatant and assay immediately. Alternatively, aliquot and store samples at -20°C or -80°C. Centrifuge the sample again after thawing before the assay. Avoid repeated freeze-thaw cycles.
  - **Cell Lysates** - Adherent cells should be detached with trypsin and then collected by centrifugation (suspension cells can be collected by centrifugation directly). Wash cells three times in cold PBS. Resuspend cells in PBS (1×) and ultrasonicate the cells 4 times (or freeze cells at ≤ -20°C. Thaw cells with gentle mixing. Repeat the freeze/thaw cycle 3 times.) Centrifuge at 1,500 x g for 10 minutes at 2 - 8°C to remove cellular debris.
  - **Cell culture supernatants and other biological fluids** – Remove particulates by centrifugation and assay immediately or aliquot and store samples at -20°C or -80°C. Avoid repeated freeze/thaw cycles.

### 9.2 Sample Dilution

Target protein concentration must be estimated and appropriate sample dilution selected such that the final target protein concentration falls near the middle of the assay linear dynamic range. Samples exhibiting saturation should be further diluted.

- Dilute samples using **Standard Diluent**.
- Mix diluted samples gently and thoroughly.
- Pipetting less than 2 µL is not recommended for optimal assay accuracy.

## 10. Assay Procedure

- Equilibrate all reagents and materials to ambient room temperature prior to use in the procedure.
- Optimal results for intra- and inter-assay reproducibility will be obtained when performing incubation steps at 37°C as indicated below.

- 10.1** Determine the required number of wells and return any remaining unused wells and desiccant to the pouch.
- 10.2** Add 100 µL of serially titrated standards, diluted samples or blank into wells of the **SIRT2 microplate**. At least two replicates of each standard, sample or blank is recommended.
- 10.3** Cover the plate with the well plate lid and incubate at 37°C for 60 minutes.
- 10.4** Remove the plate lid and discard the liquid in the wells by rigorously flicking into an acceptable waste receptacle or aspiration.
- 10.5** Gently blot any remaining liquid from the wells by tapping inverted on the benchtop onto paper toweling. Do not allow the wells to completely dry at any time.
- 10.6** Add 100 µL of prepared **1X Biotinylated SIRT2 Detector Antibody** to each well.
- 10.7** Cover with the well-plate lid and incubate at 37°C for 60 minutes.
- 10.8** Discard the liquid in the wells by rigorously flicking into an acceptable waste receptacle or aspiration.
- 10.9** Gently blot any remaining liquid from the wells by tapping inverted on the benchtop onto paper toweling. Do not allow the wells to completely dry at any time.
- 10.10** Wash plate 3 times with **1X Wash Buffer** as follows:
  - 10.10.1 Add 300 µL of **1X Wash Buffer** to each assay well.
  - 10.10.2 Incubate for 1 minute.
  - 10.10.3 Discard the liquid in the wells by rigorously flicking into an acceptable waste receptacle.
  - 10.10.4 Gently blot any remaining liquid from the wells by tapping inverted on the benchtop onto paper toweling. Do not allow the wells to completely dry at any time.
  - 10.10.5 Repeat steps 10.10.1 through 10.10.4 **two** more times.
- 10.11** Add 100 µL of prepared **1X Avidin-HRP Conjugate** into each well and incubate at 37°C for 30 minutes.
- 10.12** Discard the liquid in the wells by rigorously flicking into an acceptable waste receptacle or aspiration.
- 10.13** Gently blot any remaining liquid from the wells by tapping inverted on the benchtop onto paper toweling. Do not allow the wells to completely dry at any time.
- 10.14** Wash plate **5 times** with **1X Wash Buffer** as in Step 10.10.
- 10.15** Add 90 µL of **TMB Substrate** to each well and incubate at 37°C **in the dark** for 10-20 minutes. Wells should change to gradations of blue. If the color is too deep, reduce the incubation time.  
(NOTE: optimal incubation time must be determined by the user. Optimal development can be visualized by blue shading in the top four standard wells, while the remaining standards are still clear.)
- 10.16** Add 50 µL of **Stop Solution** to each well. Well color should change to yellow immediately. Add the **Stop Solution** in the same well order as done for the **TMB Substrate**.
- 10.17** Read the O.D. absorbance at 450 nm with a standard microplate reader within 5 minutes of stopping the reaction in step 10.16. If wavelength correction is available, set to 540 nm or 570 nm.

## 11. Calculation of Results

For analysis of the assay results, calculate the **Relative OD<sub>450</sub>** for each test or standard well as follows:

$$(\text{Relative OD}_{450}) = (\text{Well OD}_{450}) - (\text{Mean Blank Well OD}_{450})$$

The standard curve is generated by plotting the mean replicate **Relative OD<sub>450</sub>** of each standard serial dilution point vs. the respective standard concentration. The **SIRT2** concentration contained in the samples can be interpolated by using linear regression of each mean sample **Relative OD<sub>450</sub>** against the standard curve. This is best achieved using curve fitting software.

**Note:** If wavelength correction readings were available, subtract the readings at 540 nm or 570 nm from the readings at 450 nm. This may provide greater reading accuracy.

**Note:** If the samples measured were diluted, multiply the derived mean sample concentration by the dilution factor for a final sample concentration.

## 12. Typical Expected Data

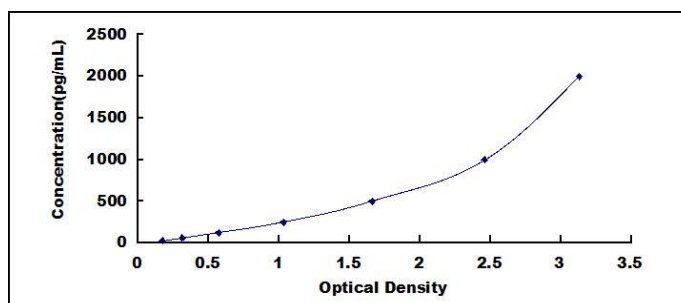
### 12.1 Reproducibility

Intra-assay Precision: 3 samples with known low, middle and high levels SIRT2 were tested with 20 replicates on one plate, respectively. Inter-assay Precision: 3 samples with known low, middle and high level SIRT2 were tested on 3 different plates, 8 replicates in each plate.

Sample	Intra-Assay			Inter-Assay		
	1	2	3	1	2	3
Sample	1	2	3	1	2	3
n	20	20	20	24	24	24
Mean (ng/ml)						
SD						
CV (%)						

### 12.2 Typical standard curve

This standard curve is for demonstration purposes only. An assay specific standard curve should be performed with each assay



**12.3 Linearity**

Kit linearity evaluated by testing serially diluted samples containing known concentrations of SIRT2. Results are expressed as the percentage of the expected concentration measurement.

Sample Type	Dilution Level			
	1:2	1:4	1:8	1:16
Serum (n=5)				
EDTA Plasma (n=5)				
Heparin Plasma (n=5)				

**12.4 Recovery**

The following matrices were spiked with known concentration of SIRT2. Recovery is expressed as the percentage of the expected concentration measurement.

Sample Type	Recovery Range (%)	Average (%)
Serum(n=5)		
EDTA Plasma(n=5)		
Heparin Plasma(n=5)		

## 13. Technical Resources

### Technical Support:

For optimal service please be prepared to supply the lot number of the kit used.

#### USA

Aviva Systems Biology, Corp.  
5754 Pacific Center Blvd, Suite 201  
San Diego, CA 92121

Phone: 858-552-6979  
Toll Free: 888-880-0001  
Fax: 858-552-6975

Technical support: [techsupport@avivasysbio.com](mailto:techsupport@avivasysbio.com)

#### China

Beijing AVIVA Systems Biology  
6th Floor, B Building, Kaichi Tower  
#A-2 Jinfu Road.  
Daxing Industrial Development Zone  
Beijing, 102600, CHINA

Phone: (86)10-60214720  
Fax: (86)10-60214722  
E-mail: [support@avivasysbio.com.cn](mailto:support@avivasysbio.com.cn)

中国地址: 北京大兴工业开发区金辅路甲 2 号凯驰大厦 B 座 6 层 (102600)

电话: 010-60214720/21

传真: 010-60214722

产品售前咨询及销售: [sales@avivasysbio.com.cn](mailto:sales@avivasysbio.com.cn)

售后及技术支持: [support@avivasysbio.com.cn](mailto:support@avivasysbio.com.cn)