



**Prl3d1 ELISA Kit (Mouse)
(OKWB00271)
Lot# KE1767
Instructions for Use**

For the quantitative measurement of Prl3d1 in serum, plasma, tissue homogenates,
and other biological fluids.

Lot to lot variations can occur. Refer to the manual provided with the kit.

This product is intended for research use only.

Table of Contents

1. Background	2
2. Assay Summary	3
3. Storage and Stability	3
4. Kit Components.....	3
5. Precautions.....	4
6. Required Materials Not Supplied	4
7. Technical Application Tips	4
8. Reagent Preparation	5
9. Sample Preparation	7
10. Assay Procedure.....	8
11. Calculation of Results	9
12. Typical Expected Data	9
13. Technical Resources.....	11

1. Background

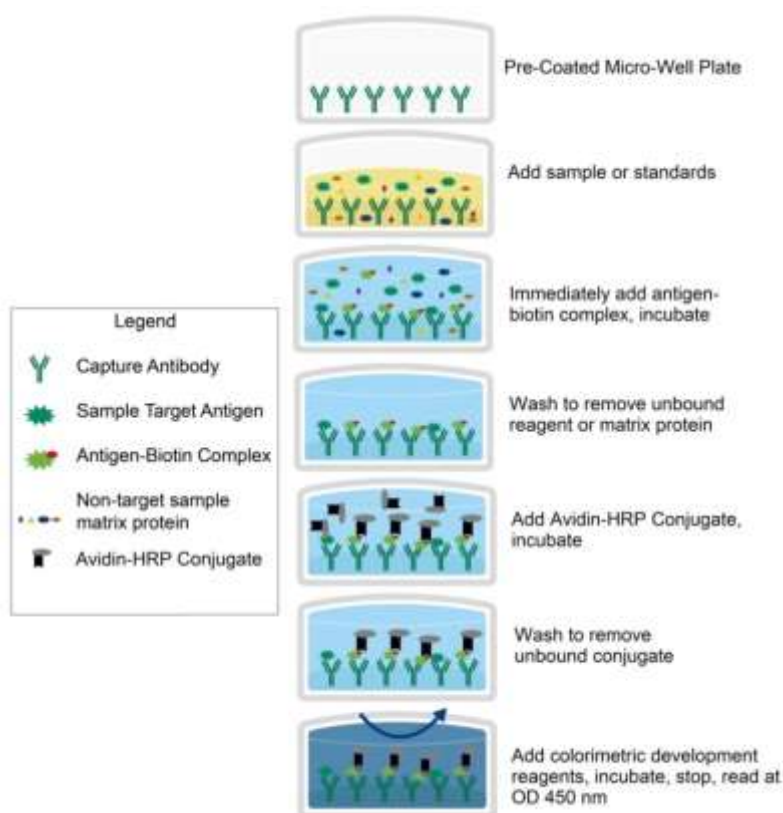
Principle

Aviva Systems Biology Prl3d1 ELISA Kit (Mouse) (OKWB00271) is based on a competitive enzyme immunoassay technique. The microtiter well-plate in this kit has been pre-coated with Prl3d1. Sample or standards are added to the wells along with a Prl3d1 biotin complex and incubated. The Prl3d1 found in the sample or standards inhibits the Prl3d1 detector antibody from binding to the immobilized Prl3d1 on the plate. Excess unbound sample or standard Prl3d1 and biotin complex is washed from the plate. Streptavidin-HRP conjugate is added, incubated and washed. An enzymatic reaction is then produced through the addition of TMB substrate which is catalyzed by the immobilized HRP to generate a blue color product that changes to yellow after adding acidic stop solution. The density of yellow coloration is measured by reading the absorbance at 450 nm which is quantitatively proportional to the amount of Prl3d1 biotinylated detector antibody bound in the well and inversely proportional to the amount of Prl3d1 which was contained in the sample or standard.

General Specifications

General Specifications	
Range	0.156 - 10 ng/mL
LOD	<0.094 ng/mL (Derived by linear regression of OD ₄₅₀ of the Mean Blank + 2xSD)
Specificity	<p>Mouse Prolactin-3D1</p> <p><u>UniProt ID:</u> P18121</p> <p><u>Target Alias:</u> A1325057, Chorionic somatomammotropin hormone 1, Csh1, MGC76481, mPL-I, P1, PL-1, placental lactogen 1, Placental lactogen I, PL-I, PL-Ia, PL-I-alpha, Prolactin-3D1, prolactin-like 2</p>
Cross-Reactivity	No detectable cross-reactivity with other relevant proteins

2. Assay Summary



3. Storage and Stability

- Open kit immediately upon receipt. Store components at -20°C (NOTE: exceptions below) for 6 months or until expiration date. Avoid any freeze/thaw cycles.

4. Kit Components

- The following reagents are the provided contents of the kit.

Description	Quantity	Storage Conditions
Prl3d1 Microplate	96 Wells (12 x 8 Well strips)	-20°C for 6 months
Prl3d1 Lyophilized Standard	2 x 10 ng	
100X Prl3d1-Biotin Complex	1 x 60 µL	4°C for 6 months
100X Streptavidin-HRP Conjugate	1 x 120 µL	
Sample Diluent	1 x 20 mL	
Biotin Complex Diluent	1 x 10 mL	
SABC Dilution Buffer	1 x 10 mL	
25X Wash Buffer	1 x 30 mL	
Stop Solution	1 x 10 mL	
TMB Substrate	1 x 10 mL	

5. Precautions

- Read instructions fully prior to beginning use of the assay kit.
- Any deviations or modifications from the described method or use of other reagents could result in a reduction of performance.
- Reduce exposure to potentially harmful substances by wearing personal protective lab equipment including lab coats, gloves and glasses.
- For information on hazardous substances included in the kit please refer to the Material Safety Data Sheet (MSDS).
- Kit cannot be used beyond the expiration date on the label.

6. Required Materials Not Supplied

- Microplate reader capable of reading absorbance at 450 nm.
- Automated plate washer (optional).
- Pipettes capable of precisely dispensing 0.5 μ L through 1 mL volumes of aqueous solutions.
- Pipettes or volumetric glassware capable of precisely measuring 1 mL through 100 mL of aqueous solutions.
- New, clean tubes and/or micro-centrifuge tubes for the preparation of standards or samples.
- Absorbent paper or paper toweling.
- Distilled or deionized ultrapure water.
- 37°C Incubator (optional)

7. Technical Application Tips

- Do not mix or substitute components from other kits.
- To ensure the validity of experimental operation, it is recommended that pilot experiments using standards and a small selection of sample dilutions to ensure optimal dilution range for quantitation.
- Samples exhibiting OD measurements higher than the highest standard should be diluted further in the appropriate sample dilution buffers.
- Prior to using the kit, briefly spin component tubes to collect all reagents at the bottom.
- Replicate wells are recommended for standards and samples.
- Cover microplate while incubating to prevent evaporation.
- Do not allow the microplate wells dry at any point during the assay procedure.
- Do not reuse tips or tube to prevent cross contamination.
- Avoid causing bubbles or foaming when pipetting, mixing or reconstituting.
- Completely remove of all liquids when washing to prevent cross contamination.
- Prepare reagents immediately prior to use and do not store, with the exception of the top standard.
- Equilibrate all materials to ambient room temperature prior to use (standards exception).
- For optimal results for inter- and intra-assay consistency, equilibrate all materials to room temperature prior to performing assay (standards exception) and perform all incubations at 37°C.
- Pipetting less than 1 μ L is not recommended for optimal assay accuracy.
- Once the procedure has been started, all steps should be completed without interruption. Ensure that all reagents, materials and devices are ready at the appropriate time.
- Incubation times will affect results. All wells should be handled in the same sequential order and time intervals for optimal results.
- Samples containing bilirubin, precipitates or fibrin strands or are hemolytic or lipemic might cause inaccurate results due to interfering factors.
- TMB Substrate is easily contaminated and should be colorless or light blue until added to plate. Handle carefully and protect from light.

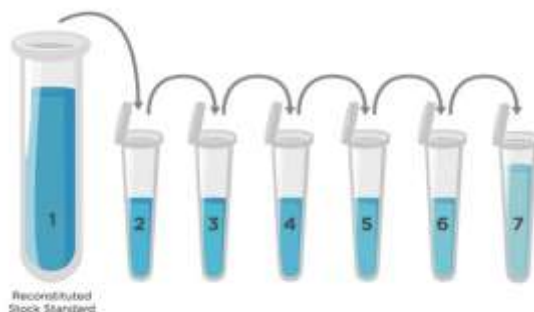
8. Reagent Preparation

- Equilibrate all materials to room temperature prior to use and use immediately.

8.1 PrI3d1 Assay Standards

- 8.1.1 Prepare the PrI3d1 standards no greater than 2 hours prior to performing experiment. Standards should be held on ice until use in the experiment.
- 8.1.2 Reconstitute one vial of the provided **10 ng Lyophilized Standard** for each experiment. Prepare a stock **10 ng/mL Standard** by reconstituting one tube of **Lyophilized Standard** as follows:
 - 8.1.2.1 Gently spin or tap the vial at 6,000 – 10,000 rpm for 30 seconds to collect all material at the bottom.
 - 8.1.2.2 Add 1 mL of **Sample Diluent** to the vial.
 - 8.1.2.3 Seal the vial then mix gently and thoroughly.
 - 8.1.2.4 Leave the vial at ambient temperature for 15 minutes.
- 8.1.3 Prepare a set of serially diluted standards as follows:
 - 8.1.3.1 Label tubes with numbers 2 – 8.
 - 8.1.3.2 Use the undiluted **10 ng/mL Standard** from step 8.1.2 as the high standard point (Tube #1).
 - 8.1.3.3 Add 300 μ L of **Sample Diluent** to Tube #'s 2 – 8.
 - 8.1.3.4 Prepare **Standard #2** by adding 300 μ L of **10 ng/mL Standard** (Tube #1) to Tube #2. Mix gently and thoroughly.
 - 8.1.3.5 Prepare **Standard #3** by adding 300 μ L of **Standard #2** from Tube #2 to Tube #3. Mix gently and thoroughly.
 - 8.1.3.6 Prepare further serial dilutions through Tube #7. Reference the table below as a guide for serial dilution scheme.
 - 8.1.3.7 Tube #8 is a blank standard (only **Sample Diluent**), which should be included with every experiment.

Standard Number (Tube)	Standard To Dilute	Volume Standard to Dilute (μ L)	Volume Sample Diluent (μ L)	Total Volume (μ L)	Final Concentration
1	10 ng/mL Reconstituted Standard	NA	1,000	1,000	10 ng/mL
2	10 ng/mL	300	300	600	5 ng/mL
3	5 ng/mL	300	300	600	2.5 ng/mL
4	2.5 ng/mL	300	300	600	1.25 ng/mL
5	1.25 ng/mL	300	300	600	0.625 ng/mL
6	0.625 ng/mL	300	300	600	0.312 ng/mL
7	0.312 ng/mL	300	300	600	0.156 ng/mL
8	NA	0	300	300	0.0 (Blank)



8.2 1X Prl3d1-Biotin Complex

- 8.2.1 Prepare the **1X Prl3d1-Biotin Complex** immediately prior to use by diluting the **100X Prl3d1-Biotin Complex** 1:100 with **Biotin Complex Diluent**.
- 8.2.2 For each well strip to be used in the experiment (8-wells) prepare 500 µL by adding 5 µL of **100X Prl3d1-Biotin Complex** to 495 µL **Biotin Complex Diluent**.
- 8.2.3 Mix thoroughly and gently. Hold no longer than 2 hours prior to using in procedure. Do not store at 1X concentration for future use.

8.3 1X HRP-Streptavidin Conjugate (SABC)

- 8.3.1 Prepare the **1X HRP-Streptavidin Conjugate** immediately prior to use by diluting the **100X HRP-Streptavidin Conjugate** 1:100 with **SABC Dilution Buffer**.
- 8.3.2 For each well strip to be used in the experiment (8-wells) prepare 1,000 µL by adding 10 µL of **100X HRP-Streptavidin Conjugate** to 990 µL **SABC Dilution Buffer**.
- 8.3.3 Mix thoroughly and gently. Hold no longer than 2 hours prior to using in procedure. Do not store at 1X concentration for future use.

8.4 1X Wash Buffer

- 8.4.1 If crystals have formed in the **25X Wash Buffer** concentrate, equilibrate to room temperature and mix gently until crystals have completely dissolved.
- 8.4.2 Add the entire 30 mL contents of the **25X Wash Buffer** bottle to 720 mL of ultra-pure water to a clean > 1,000 mL bottle or other vessel.
- 8.4.3 Seal and mix gently by inversion. Avoid foaming or bubbles.
- 8.4.4 Store the **1X Wash Buffer** at room temperature until ready to use in the procedure. Store the prepared **1X Wash Buffer** at 4°C for no longer than 1 week. Do not freeze.

8.5 Microplate Preparation

- Micro-plates are provided ready to use and do not require rinsing or blocking.
- Unused well strips should be returned to the original packaging, sealed and stored at 4°C.
- Equilibrate microplates to ambient temperatures prior to opening to reduce potential condensation.

9. Sample Preparation

9.1 Sample Preparation and Storage

- Store samples to be assayed at 2-8°C for 24 hours prior being assayed.
- For long term storage, aliquot and freeze samples at -20°C. Avoid repeated freeze-thaw cycles.
- Samples not indicated in the manual must be tested to determine if the kit is valid.
- Prepare samples as follows:
 - **Serum** - Use a serum separator tube (SST) and allow samples to clot for 30 minutes at room temperature or overnight at 4°C before centrifugation for 15 minutes at 1,000 x g. Remove serum and assay immediately or aliquot and store samples at -20°C or -80°C. Avoid repeated freeze-thaw cycles.
 - **Plasma** - Collect plasma using EDTA or heparin as an anticoagulant. Centrifuge for 15 minutes at 1,000 x g at 2-8°C within 30 minutes of collection. Assay immediately or aliquot and store samples at -20°C or -80°C. Avoid repeated freeze-thaw cycles.
 - **Tissue Homogenates** – Rinse 100 mg of tissue 1X PBS, homogenize in 1 mL of 1X PBS then store overnight at -20°C. Perform two freeze-thaw cycles to break the cell membranes then centrifuge the homogenates for 5 minutes at 5,000 x g, 2-8°C. Remove the supernatant and assay immediately. Alternatively, aliquot and store samples at -20°C or -80°C. Centrifuge the sample again after thawing before the assay. Avoid repeated freeze-thaw cycles.
 - **Other biological fluids** – Remove particulates by centrifugation and assay immediately or aliquot and store samples at -20°C or -80°C. Avoid repeated freeze/thaw cycles.

9.2 Sample Dilution

Target protein concentration must be estimated and appropriate sample dilution selected such that the final target protein concentration falls near the middle of the assay linear dynamic range. Samples exhibiting saturation should be further diluted.

- Dilute samples using **Sample Diluent**.
- Mix diluted samples gently and thoroughly.
- Pipetting less than 2 µL is not recommended for optimal assay accuracy.

10. Assay Procedure

- Equilibrate all reagents and materials to ambient room temperature prior to use in the procedure.
- Optimal results for intra- and inter-assay reproducibility will be obtained when performing incubation steps at 37°C as indicated below.

- 10.1** Determine the required number of wells and return any remaining unused wells and desiccant to the pouch.
- 10.2** Retain at least one well as an absolute Blank without any samples or reagents.
- 10.3** Add 50 µL of serially titrated standards, diluted samples or blank into wells of the **Anti-Prl3d1 Microplate**. At least two replicates of each standard, sample or blank is recommended.
- 10.4** Immediately add 50 µL of **1X Prl3d1-Biotin Complex** to each well (excluding absolute Blank).
- 10.5** Cover the plate with the plate sealer and incubate for 45 minutes.
- 10.6** Gently blot any remaining liquid from the wells by tapping inverted on the benchtop onto paper toweling. Do not allow the wells to completely dry at any time.
- 10.7** Wash plate 3 times with **1X Wash Buffer** as follows:
 - 10.7.1 Add 300 µL of **1X Wash Buffer** to each assay well.
 - 10.7.2 Incubate for 2 minutes.
 - 10.7.3 Discard the liquid in the wells by rigorously flicking into an acceptable waste receptacle.
 - 10.7.4 Gently blot any remaining liquid from the wells by tapping inverted on the benchtop onto paper toweling. Do not allow the wells to completely dry at any time.
 - 10.7.5 Repeat steps 10.7.1 through 10.7.4 **two** more times.
- 10.8** Add 100 µL of **1X Streptavidin-HRP Conjugate** to each well.
- 10.9** Cover the plate with the plate sealer and incubate for 30 minutes.
- 10.10** Discard the liquid in the wells by rigorously flicking into an acceptable waste receptacle or aspiration.
- 10.11** Gently blot any remaining liquid from the wells by tapping inverted on the benchtop onto paper toweling. Do not allow the wells to completely dry at any time.
- 10.12** Repeat wash as in **Step 10.7**.
- 10.13** Add 90 µL of **TMB Substrate** to each well, cover with plate sealer and incubate at 37°C in the dark for 10-20 minutes. Wells should change to gradations of blue. If the color is too deep based on the standard, adjust incubation times.
(NOTE: optimal incubation time must be determined by the user. Optimal development can be visualized by blue shading in the bottom four standard wells, while the remaining standards still appear clearer.)
- 10.14** Add 50 µL of **Stop Solution** to each well. Well color should change to yellow immediately. Add the **Stop Solution** in the same well order as done for the **TMB Substrate**.
- 10.15** Read the O.D. absorbance at 450 nm with a standard microplate reader within 5 minutes of stopping the reaction in step 10.14. If wavelength correction is available, set to 540 nm or 570 nm.

11. Calculation of Results

For analysis of the assay results, calculate the **Relative OD₄₅₀** for each test or standard well as follows:

$$(\text{Relative OD}_{450}) = (\text{Well OD}_{450}) - (\text{Mean Blank Well OD}_{450})$$

The standard curve is generated by plotting the mean replicate **Relative OD₄₅₀** of each standard serial dilution point vs. the respective standard concentration. The **Prl3d1** concentration contained in the samples can be interpolated by using linear regression of each mean sample **Relative OD₄₅₀** against the standard curve. This is best achieved using curve fitting software.

Note: if wavelength correction readings were available, subtract the readings at 540 nm or 570 nm from the readings at 450 nm. This may provide greater reading accuracy.

Note: if the samples measured were diluted, multiply the derived mean sample concentration by the dilution factor for a final sample concentration.

12. Typical Expected Data

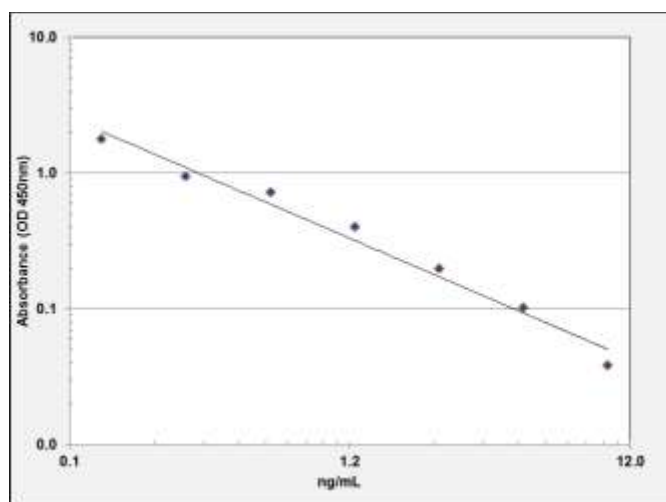
12.1 Reproducibility

Three samples concentrations were measured in replicate within an assay plate and across replicate assays to assess Intra- and Mean Inter-Assay Precision.

Mean Intra-Assay Precision - $\leq 8\%$

Mean Inter-Assay Precision - $\leq 10\%$

12.2 Typical standard curve. This standard curve is for demonstration purposes only. An assay specific standard curve should be performed with each assay.



ng/mL	Absorbance		Mean Absorbance
	Rep 1	Rep 2	
10	0.112	0.116	0.114
5.0	0.173	0.179	0.176
2.5	0.267	0.275	0.271
1.25	0.464	0.478	0.471
0.625	0.777	0.799	0.788
0.313	0.999	1.027	1.013
0.156	1.800	1.852	1.826
Blank	2.459	2.531	2.495

12.3 Linearity

Kit linearity evaluated by testing serially diluted samples containing known concentrations of Prl3d1. Results are expressed as the percentage of the expected concentration measurement.

Sample Type	Dilution Level		
	1:2	1:4	1:8
serum(n=5)	88 – 96%	90 – 98%	86 – 104%
EDTA plasma(n=5)	84 – 95%	84 – 98%	84 – 91%
heparin plasma(n=5)	83 – 97%	83 – 99%	89 – 99%

12.4 Recovery

The following matrices were spiked to known concentrations using recombinant Prl3d1. Recovery is expressed as the percentage of the expected concentration measurement.

Sample Type	Recovery Range (%)	Average (%)
serum(n=5)	85 – 103	97
EDTA plasma(n=5)	88 – 99	95
heparin plasma(n=5)	87 – 104	96

13. Technical Resources

Technical Support:

For optimal service, please be prepared to supply the lot number of the kit used.

USA

Aviva Systems Biology, Corp.
7700 Ronson Rd, Suite 100
San Diego, CA 92121

Phone: 858-552-6979
Toll Free: 888-880-0001
Fax: 858-552-6975

Technical support: techsupport@avivasysbio.com

China

Beijing AVIVA Systems Biology
6th Floor, B Building, Kaichi Tower
#A-2 Jinfu Road.
Daxing Industrial Development Zone
Beijing, 102600, CHINA

Phone: (86)10-60214720
Fax: (86)10-60214722
E-mail: support@avivasysbio.com.cn

中国地址: 北京大兴工业开发区金辅路甲 2 号凯驰大厦 B 座 6 层 (102600)
电话: 010-60214720/21
传真: 010-60214722

产品售前咨询及销售: sales@avivasysbio.com.cn
售后及技术支持: support@avivasysbio.com.cn