

---

Product Manual

# RAPAd<sup>®</sup> CMV Adenoviral Expression System

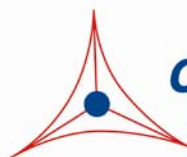
Catalog Number

VPK-252

1 kit

**FOR RESEARCH USE ONLY**  
**Not for use in diagnostic procedures**

---



**CELL BIOLABS, INC.**

*Creating Solutions for Life Science Research*

## **Introduction**

Recombinant adenoviruses have tremendous potential in both research and therapeutic applications. There are numerous advantages they provide when introducing genetic material into host cells. The permissive host cell range is very wide. The virus has been used to infect many mammalian cell types (both replicative and non-replicative) for high expression of the recombinant protein. Recombinant adenoviruses are especially useful for gene transfer and protein expression in cell lines that have low transfection efficiency with liposome. After entering cells, the virus remains epichromosomal (i.e. does not integrate into the host chromosome so does not activate or inactivate host genes). Recently, recombinant adenoviruses have been used to deliver RNAi into cells.

Two methods have traditionally been used to generate recombinant adenoviruses. The first involves homologous recombination of a shuttle vector containing gene of interest and an adenoviral backbone plasmid vector (restricted in E1/E3) in an adenovirus packaging cell line. The isolation of recombinant adenovirus by this method involves performing multiple plaque isolations to avoid wild-type virus and is extremely laborious and time consuming. The second method, pAdEasy system, employs the homologous recombination machinery in *E. coli*, a recombinant adenovirus is produced by a double-recombination event between cotransformed adenoviral backbone plasmid vector and a shuttle vector carrying the gene of interest. For the pAdEasy method, the system is high fidelity, but inefficient and requires the screening of many bacterial colonies. This results in a significant time commitment even before transfection of recombinant DNA into E1-expressing cells such as HEK293 cells.

Cell Biolabs' RAPAd® Adenoviral Expression System provides a much faster and safer method to generate RCA-free recombinant adenovirus at high titer (see Table 1). The RAPAd® system uses a novel Ad backbone devoid of the left-hand ITR, the packaging signal and E1 sequences. There is no need to perform the bacterial *in vitro* homologous recombination (pAdEasy method), and also the multiple plaque isolations (standard homologous recombination method in packaging cell line). The RAPAd® system allows for generation of a recombinant virus within 2 weeks and the virus produced contained virtually no contaminating E1a sequences or replication-competent virus (RCA).

Cell Biolabs' RAPAd® Adenoviral Expression System is simple to use. The method is straightforward and requires very limited 'hands on' time from shuttle/backbone cotransfection to the isolation of virus particles. It produces equivalent infectious titers as the standard viral genome/shuttle plasmid recombination method.

In Cell Biolabs' RAPAd® CMV Adenoviral Expression System, the shuttle vector contains a CMV ahead of the multiple cloning sites.

<b>Standard Homologous Recombination</b>	<b>pAdEasy Expression System</b>	<b>RAPAd® Expression System</b>
<p data-bbox="155 327 493 428">Cotransfect 293 cells with Shuttle Vector and Ad Backbone Vector</p> <p data-bbox="310 464 326 604">↓</p> <p data-bbox="261 621 380 722">Multiple Plaque Isolations</p> <p data-bbox="310 747 326 888">↓</p> <p data-bbox="233 909 415 976">Virus Amplification</p> <p data-bbox="310 993 326 1134">↓</p> <p data-bbox="250 1163 399 1192">Viral Stock</p>	<p data-bbox="610 327 802 428">Linearize Shuttle Vector using PmeI</p> <p data-bbox="691 464 708 604">↓</p> <p data-bbox="526 621 886 722">Cotransform <i>E.coli</i> BJ5183 cells with linearized Shuttle Vector and pAdEasy Vector</p> <p data-bbox="691 747 708 888">↓</p> <p data-bbox="529 909 883 976">Recombinant selection by restriction enzyme analysis</p> <p data-bbox="691 993 708 1134">↓</p> <p data-bbox="558 1163 854 1230">Linearize recombinant plasmid using PacI</p> <p data-bbox="691 1247 708 1388">↓</p> <p data-bbox="581 1417 831 1446">Transfect 293 cells</p> <p data-bbox="691 1472 708 1612">↓</p> <p data-bbox="630 1642 782 1671">Viral Stock</p>	<p data-bbox="915 327 1281 428">Linearize Shuttle Vector and RAPAd® Ad Backbone Vector using PacI</p> <p data-bbox="1097 464 1114 604">↓</p> <p data-bbox="1024 621 1175 688">Cotransfect 293 cells</p> <p data-bbox="1097 747 1114 888">↓</p> <p data-bbox="1024 909 1175 938">Viral Stock</p>
<b>12-18 weeks</b>	<b>8-9 weeks</b>	<b>2-3 weeks</b>

**Table 1.** Outline of Recombinant Adenovirus Systems

## **Related Products**

1. AD-100: 293AD Cell Line
2. AD-200: ViraDuctin™ Adenovirus Transduction Reagent
3. VPK-099: ViraBind™ Adenovirus Miniprep Kit
4. VPK-109: QuickTiter™ Adenovirus Titer Immunoassay Kit
5. VPK-110: QuickTiter™ Adenovirus Titer ELISA Kit
6. VPK-111: Rapid RCA Assay Kit
7. VPK-250: RAPAd® Universal Adenoviral Expression System
8. VPK-251: RAPAd® RSV Adenoviral Expression System
9. VPK-254: RAPAd® CMV Adenoviral Bicistronic Expression System (GFP)

## **Kit Components**

1. pacAd5 CMVK-NpA Shuttle Vector (Part No. 325201): One 40 µL vial at 0.25 mg/mL.
2. pacAd5 9.2-100 Vector (Part No. 325002): One 40 µL vial at 0.25 mg/mL.
3. pacAd5 CMV-GFP Control Vector (Part No. 325004): One 40 µL vial at 0.25 mg/mL.
4. pacAd5 CMV-ntLacZ Control Vector (Part No. 325202): One 40 µL vial at 0.25 mg/mL.

## **Materials Not Supplied**

1. 293 cells: we recommend 293AD Cell Line (Cat.# AD-100) for high titer production of recombinant adenovirus.
2. 293 Cell Culture Medium
3. Transfection Reagents
4. PacI (New England Biolabs, Cat.# R0547L)

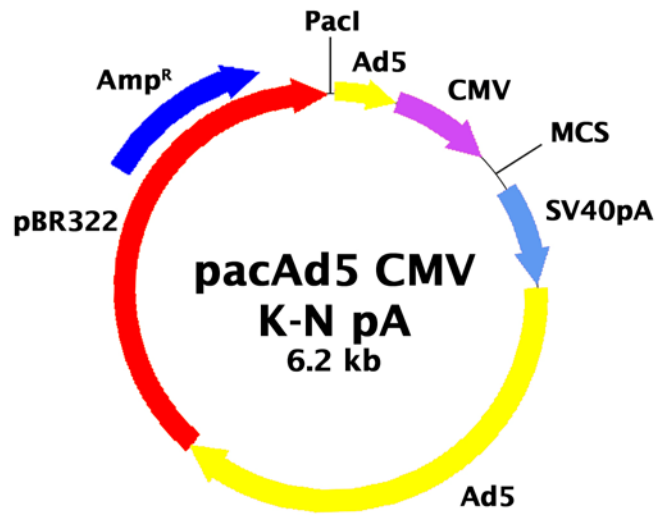
## **Storage**

Upon receipt, store all kit components at -20°C.

## **Safety Considerations**

Remember that you will be working with samples containing infectious virus. Follow the recommended NIH guidelines for all materials containing BSL-2 organisms.

## Vector Features



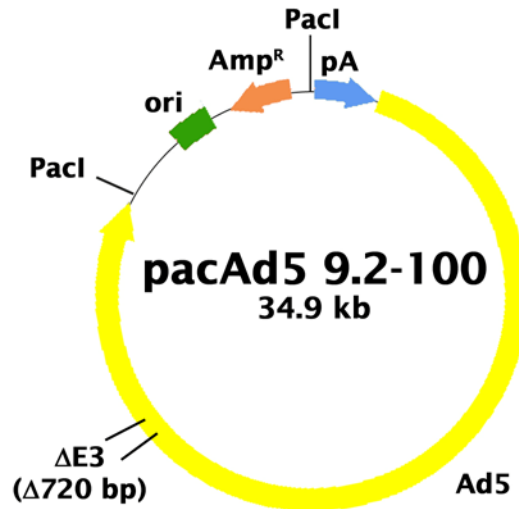
**Figure 1.** pacAd5 CMVK-NpA Vector (6217 bp, Ampicillin-resistant).

### **pacAd5 CMVK-NpA Features:**

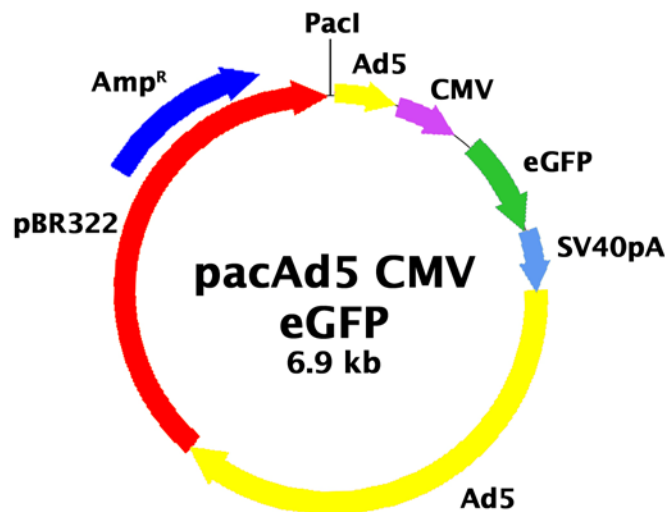
3-10:	PacI
16-368:	1-353 of Ad5
382-912	CMV Promoter
913-1002:	MCS
995-1442:	SV40 pA
1437-3901:	3328-5792 of Ad5
5149-6009:	$\beta$ Lactamase

### Multiple Cloning Sites:

Pme I \_\_\_\_\_ Hind III \_\_\_\_\_ EcoR I \_\_\_\_\_ Spe I \_\_\_\_\_ Not I \_\_\_\_\_  
 TTGGTACCGTTTAAACTCGAGGTCGACGGTATCGATAAGCTTGATATCGAATTCCTGCAGCCCGGGGATCCACTAGTTCTAGAGCGGCCGC  
 Kpn I            Xho I            Cla I            EcoR V            BamH I            Xba I



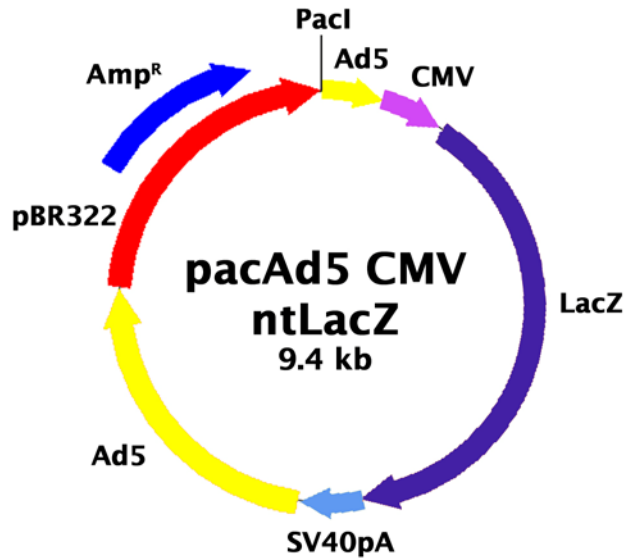
**Figure 2.** pacAd5 9.2-100 Vector (34947 bp, Ampicillin-resistant). The novel pacAd5 9.2-100 Ad backbone vector is devoid of the left-hand ITR, the packaging signal and E1 sequences.



**Figure 3.** pacAd5 CMV-GFP Control Vector (6935 bp, Ampicillin-resistant).

**pacAd5 CMV-GFP Features:**

3-10:	PacI
16-368:	1-353 of Ad5
385-912:	CMV Promoter
992-1711:	GFP
1713-2160:	SV40 pA
2161-4615:	3328-5792 of Ad5
5867-6727:	$\beta$ Lactamase



**Figure 4.** pacAd5 CMV-ntLacZ Control Vector (9278 bp, Ampicillin-resistant).

**pacAd5 CMV-ntLacZ Features:**

3-10:	PacI
16-368:	1-353 of Ad5
385-912:	CMV Promoter
1105-4148:	ntLacZ
4193-4640:	SV40 pA
4641-7095:	3328-5792 of Ad5
8347-9210:	$\beta$ Lactamase

**Preparation of Recombinant Adenovirus**

**I. Vector Linearization with PacI**

1. Digest a sufficient amount of the pacAd5 CMVK-NpA shuttle vector containing gene of interest and the pacAd5 9.2-100 Ad backbone vector with PacI.
2. Run 0.5  $\mu$ g of each digested DNA and undigested DNA on a 0.8% agarose gel to confirm the completion of PacI digestion (For pacAd5 9.2-100, one band of ~33 kb and a second band of 2.0 kb).
3. Remove buffer and enzyme from the remainder of the restriction reactions by phenol extraction/ethanol precipitation or using a similar DNA purification kit.
4. Resuspend the DNA in sterile dH<sub>2</sub>O. Store the digested DNA at -20°C.

**II. Transfection**

1. Seed  $2 \times 10^6$  cells in a 60 mm culture dish without antibiotics one day before transfection.

2. After 16 to 24 hours, start transfection when the culture becomes 70-80% confluence.  
*Note: We suggest transfecting cells with FuGENE® Transfection Reagent (Roche Applied Science) or Lipofectamine™ Plus (Invitrogen). For example, 4 µg of pacAd5 CMVK-NpA shuttle vector and 1 µg of pacAd5 9.2-100 Ad backbone vector are mixed with 9 µL FuGENE® Transfection Reagent according to the manufacturer's recommendation. The mixed DNA-FuGENE® complex is added by dropwise into the culture media.*
3. Aspirate the media containing transfection reagent the next day and add 4 mL of complete culture medium.
4. After incubating for 7 days, check for the presence of plaques. If plate is ready for harvest, (>50% of cells lifted), then collect the Crude Viral Lysate.
5. If not, feed the cells with 1 mL of complete culture medium, continue to incubate at 37°C with CO<sub>2</sub>.
6. On day 10, check for the presence of plaques. If plate is ready for harvest, (>50% of cells lifted), then collect the Crude Viral Lysate.
7. If not, feed the cells with 1 mL of complete culture medium, continue to incubate at 37°C with CO<sub>2</sub>. Keep checking plate for the presence of plaques. Do not keep plate more than 15 days.

### III. Harvesting the Crude Viral Lysate

1. Harvest adenovirus-containing cells by squirting cells off the plate with a 5 or 10 mL sterile serological pipette. Transfer cells and media to a sterile 15 ml tube. Scraping the cells into the medium with a cell lifter if necessary.
2. Release viruses from cells by three freeze/thaw cycles (10 minutes each in 37°C water bath and dry ice-methanol bath).
3. Centrifuge the cell lysate in a table-top centrifuge at 3000 rpm for 15 minutes at room temperature to pellet the cell debris.
4. Aliquot and store the Crude Viral Lysate (Initial Viral Stock) at -80°C.

### IV. Amplification

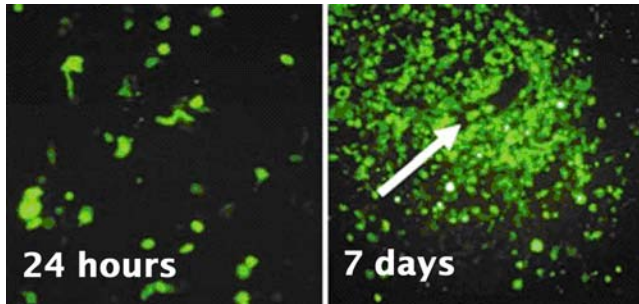
*Note: The following procedure is suggested for T75 flasks and may be optimized to suit individual needs.*

1. Seed 3-5 x 10<sup>6</sup> cells in a T75 flask one day before infection.
2. Add 50% of the above Crude Viral Lysate to the culture. We recommend using a multiplicity of ≥0.5 PFU (plaque forming units) or enough viruses that cells demonstrate cytopathic effects (CPEs) within 48 hrs.
3. During 24 - 48 hr infection, examine the monolayer twice per day under the microscope for CPE. When CPE is nearly complete (i.e. most cells rounded but not yet detached from the flask), harvest cells by pipetting media up and down to wash the infected cells from the flask into the media.
4. Pool infected cells and medium. Pellet cells by centrifugation at 1000 g for 5 minutes. Remove supernatant, resuspend cell pellet in medium or in 10 mM Tris, pH 8.0, 100 mM NaCl. (0.25-0.5 mL per T75 flask).
5. Release the adenoviruses from the cell suspension with three freeze/thaw cycles. Centrifuge at 3000 g for 10 minutes to pellet the cell debris. Discard the pellet and save supernatant as viral stock.
6. The viral supernatant can be stored at -80°C or immediately purified or titered.



## Example of Results

The following figures demonstrate typical results of generating recombinant adenovirus. One should use the data below for reference only. This data should not be used to interpret actual results.



**Figure 5.** Generation of recombinant adenovirus using the RAPAd® Adenoviral Expression System. 293 cells were transfected with PacI linearized pacAd5 CMV-GFP vector and pacAd5 9.2-100 vector. Plates were examined for the presence of viral foci under inverted fluorescence microscope.

## Appendix

### pacAd5 CMV-K-NpA Plasmid Sequence

```
AATTAATTAAGCTAGCATCATCAATAATATACCTTATTTGGATTGAAGCCAATATGATAATGAGGGGTGGAGTTTGTGACGTGGCGCGGGCGTGGGAACG
GGGCGGGTGACGTAGTAGTGTGGCGAAGTGTGATGTTGCAAGTGTGGCGGAACACATGTAAGCGACGGATGTGGCAAAGTGACGTTTTTGGTGTGCGCCGG
TGTACACAGGAAGTGACAATTTTCGCGCGGTTTTAGGCGGATGTTGTAGTAAATTTGGCGTAACCGAGTAAGATTTGGCCATTTTCGCGGGAAAACCTGAATA
AGAGGAAGTGAATCTGAATAATTTGTGTTACTCATAGCGCGTAATTTGTCTAGGGAGATCAGCCTGCAGGTCGTACATAACTTACGGTAAATGGCCCG
CCTGGCTGACCCGCCAACGACCCCGCCCATTTGACGTCAATAATGACGTATGTTCCCATAGTAACGCCAATAGGGACTTCCATTGACGTCAATGGGTGGAGT
ATTTACGGTAACTGCCACTTGGCAGTACATCAAGTGTATCATATGCCAAGTACGCCCTATTGACGTCAATGACGGTAAATGGCCCGCTGGCATTATGC
CCAGTACATGACCTTATGGGACTTTCCTACTTGGCAGTACATCTACGATATTAGTCAATCGCTATTACCATGGTGATGCGGTTTTGGCAGTACATCAATGGGCGT
GGATAGCGGTTTGACTCACGGGGATTTCCAAGTCTCCACCCATTGACGTCAATGGGAGTTTGTGTTTGGCACCAAATCAACGGGACTTCCAAAATGTCGTA
ACAACCTCCGCCCATTTGACGCAAATGGGCGGTAGGCGGTGACGGTGGGAGGTTATATAAGCAGAGCTCGTTTAGTGAACCGTCAGTTGGTACCGTTTTAACT
CGAGGTCGACGGTATCGATAAGCTTGATATCGAATTCCTGCAGCCCGGGGATCCACTAGTTCTAGAGCGGCCGCCACCGCGGGGAGATCCAGACATGATAAG
ATACATTGATGAGTTTGGACAAACCAACAATAGAAATGCAAGTGAAGAAATGCTTTATTTGTGAAATTTGTGATGCTATTGCTTTATTTGTAACCATTATAAGC
TGCAATAAACAAAGTTAAACAACAACAATTCGATTCATTTTATGTTTTAGGTTTTCAGGTTTCAGGGGAGGTTGGGAGGTTTTTTAAAGCAAGTAAACCTCTACAATGTG
GTATGGCTGATTTATGATCCCGGCTGCCTCGCGGTTTTCGGTGATGACGGTGAACCTCTTGACACATGCAGCTCCCGGAGACGGTCAAGCTTGTCTGTAAG
CGGATGCCGGGAGCAGACAAGCCCGTCAGGGCGCGTCAGCGGGTGTGGCGGGTGTGGGGCGCAGCCATGAGGTCGACTCTAGTCCCGCGGTGGCAGATCT
GGAAGGTGCTGAGGTACGATGAGACCCGACCCAGGTGCAGACCCCTGCGAGTGTGGCGGTAACATATTAGGAACGACCGCTGTGATGCTGGATGTGACCGAGGA
GCTGAGGCCGATCACTTGGTGTGCGCTGCACCCGCGTGAAGTTTGGCTTAGCGATGAAGATACAGATTGAGGTACTGAAATGTGTGGGCGTGGCTTAAGC
GTGGGAAAGAATATATAAGGTGGGGTCTTATGTAAGTTTTGTATCTGTTTTGTCAGCAGCCGCGCCGATGAGCACAACCTCGTTTTGGGATGGAAGCATTTGTA
GCTCATATTTGACAACCGCATGCCCCATGGGCGGGGTGCGTCAAGATGTGATGGGCTCCAGCATTGATGGTTCGCCCGCTCCTGCCGCAAACTCTACTAC
CTTGACCTACGAGACCGTGTCTGGAACGCGCTTGGAGACTGCAGCCTCCGCGCGCGTTCAGCCGCTGCAGCCACCGCCCGGGGATTTGTGACTGACTTTGCT
TTCTGAGCCCGCTTGAAGCAGTGCAGCTTCCCGTTCATCCGCGCGCATGACAAGTTGACGGCTCTTTTGGCACAAATTGGATTCTTTGACCCGGGAACTTA
ATGTCGTTTTCTCAGCAGCTGTTGGATCTGCGCCAGCAGGTTTTGTCCTGAAAGCTTCCCTCCCTCCCAATGCGGTTTTAAACATAAAATAAAAAACAGACTC
TGTTTTGGATTTGGATCAAGCAAGTGTCTTGTGCTTTATTTAGGGTTTTGCGCGCGCGGTAGGCCCGGGACCAGCGGTCTCGGTGTTGAGGGTCTGTGT
ATTTTTTCCAGGACGTGGTAAAGGTGACTCTGGATGTTTCAAGATACATGGGCATAAGCCCGTCTCTGGGGTGGAGGTAGCACCACTGCAGAGCTTCATGCTGCG
GGGTGGTGTGTAGATGATCCAGTCTGAGCAGGAGCGCTGGGCGTGGTGCCTAAAAATGCTTTTCAAGTAGCAAGCTGATTGCCAGGGGCGAGCCCTTGGTGTGTA
AGTGTTTACAAAGCGGTTAAGCTGGGATGGGTGCATACGTGGGATATGAGATGCATCTTGGACTGTATTTTTAGGTTGGCTATGTTCCAGCCATATCCCTC
CGGGGATTCATGTTGTGACAGAACCCAGCAGTGTATCCGGTGCATTTGGGAAATTTGTGATGCTAGCTTAGAAGGAAATCGGTGGAAGAACTTGGAGACGC
CCTTGTGACCTCCAAGATTTTCCATGCAATTCGTCATAATGATGGCAATGGCCCAAGGGCGCGGCTGGGCGAAGATATTTCTGGGATCACTAACGTCATA
GTTGTGTTCCAGGATGAGATCGTCATAGGCCATTTTTACAAAGCGCGGGCGGAGGGTGCCAGACTGCGGTATAATGGTTCATCCGGCCAGGGGCGTAGTTA
CCCTCACAGATTTGCATTTCCACGCTTTGAGTTCAGATGGGGGATCATGCTACCTGCGGGCGATGAAGAAAACGGTTTTCCGGGGTAGGGGAGATCAGCT
GGGAAGAAAGCAGGTTCTGAGCAGCTGCGACTTACCGCAGCCGGTGGGCCCGTAAATCACACCTATTACCGGGTGAACCTGGTAGTTAAGAGAGCTGCAGCT
GCCGTCATCCCTGAGCAGGGGGCCACTTCGTTAAGCATGTCCCTGACTCGCATGTTTTCCCTGACCAAATCCGCCAGAAGGGCTCGCCGCCAGCGATAGC
AGTTCTTGCAAGGAAGCAAAGTTTTTCAACCGTTTTGAGACCGTCCGCGTAGGCAATGCTTTTGGAGCGTTTTGACCAAGCAGTTCCAGGGCGTCCACAGCTCGG
TCACCTGCTCTACGGCATCTCGATCCAGCATATCTCCTCGTTTTGCGGGTTGGGGCGGCTTTGCTGTACGGCAGTAGTCCGGTGTGCTCCAGACGGGCCAGG
GTCATGCTTTCCACGGGCGAGGGTCTCGTCAGCGTAGTCTGGTACCGGTGAAGGGTGTGCGCTCCGGGCTGCGCGCTGGCCAGGGTGTGCTTGGGCTGG
TCCTGCTGGTGTGTAAGCGCTGCCGGTCTTCCGCTGCGCGTCCGGCAGGTAGCATTTGACCATGGTGTATAGTCCAGCCCTCCGCGCGTGGCCCTTGGC
```

GCGCAGCTTGCCCTTGAGAGGAGGCGCCGACGAGGGGAGTGCAGACTTTTGGGGCGTAGAGCTTGGGCGGAGAAAATACCGATTCCGGGGAGTAGGCATCC  
GCGCCGAGGCCCCGAGACGGTCTCGCATTCACGAGCCAGGTGAGCTCTGGCCGTTTCGGGGTCAAAAACCGAGTTTCCCCCATGCTTTTTGATGCGTTTCT  
TACCTTGTTTCCATGAGCCGGTCTCCAGCTCGGTGACGAAAAGGCTGTCGTTCCCGTATACAGACTTGAGAGGCTGTCCTCGACCGATGCCCTTGA  
GAGCCTTCAACCCAGTCACTCTTCCGGTGGGCGGGGCGATGACTCGTCGCCACTTATGACTGTCTTCTTTATCATGCAACTCGTAGGACAGGTGCC  
GGCAGCGCTCTGGGTCATTTTCGGCGAGGACCGCTTTCGCTGGAGCGGACGATGATCGGCCTGTGCTTGGGATTCGGAATCTTGACGCCCTCGCTCAA  
GCCTTCGTCACTGGTCCCGCCACCAACGTTTCGGCGAGAAGCAGGCCATTATCGCCGGCATGGCGCCGACGCGCTGGGTACGTTCTGCTGGCGTTTCGCGA  
CGCGAGGCTGGATGGCCTTCCCAATTATGATTCTTCTCGCTTCCGGCGGCATCGGGATGCCCGGTTGCGAGCCATGCTGTCCAGGCGAGGTAGATGACGACCA  
TCAGGGACAGTTCAAGGCCAGCAAAAGGCCAGGAACCGTAAAAGGCCGTTGCTGGCGTTTTCATAGGCTCCGCCCCCTGACGAGCATCACAAAAT  
CGACGCTCAAGTCAGAGGTGGCGAAAACCCGACAGGACTATAAAGATACCAGGCGTTTCCCCCTGGAAGCTCCCTCGTGCGTCTCCTGTTCCGACCCCTGCCG  
TTACCGGATACCTGTCCGCTTCTCCCTTCCGGAAGCGTGGCGCTTCTCATAGCTCACGCTGTAGGTATCTCAGTTCCGTTGAGTCCAAACCCGTAAGACACGACTTATCGCCACTGGCA  
GGGCTGTGTGACGAACCCCGTTAGCCCGACCGCTGCGCTTATCCGGTAACTATCGTCTGAGTCCAAACCCGTAAGACACGACTTATCGCCACTGGCA  
GCAGCCACTGGTAACAGGATTAGCAGAGCGAGGTATGTAGGCGGTCTACAGAGTTCTTGAAGTGGTGGCCTAACTACGGCTACACTAGAAGGACAGTATTTG  
GTATCTGCGCTCTGCTGAAGCCAGTTACCTTCGGAAAAGAGTTGGTAGCTTTGATCCGGCAAACAAACCCGCTGGTAGCGGTGGTTTTTTTTGTTTGC  
CGAGCAGATTACGCGCAGAAAAAAGGATCTCAAGAAGATCCTTTGATCTTTTCTACGGGGTCTGACGCTCAGTGGAAACGAAAACCTACGTTAAGGGATTTT  
GTCATGAGATTATCAAAAAGGATCTTCACTAGATCCTTTTAAATTAATAAAGTAAATCAATCTAAAGTATATATGAGTAACTTGGTCTGACAGTT  
ACCAATGCTTAATCAGTGAGGACCTATCTCAGCGATCTGTCTATTTCGTTTATCCATAGTTGCCTGACTCCCGTCTGTGATAGATAACTACGATACGGGAGG  
CTTACCATCTGGCCCCAGTGTGCAATGATACCGCGAGACCCAGCTCACCGGCTCCAGATTTATCAGCAATAAACCCAGCCAGCCGGAAGGGCCGAGCGCAGA  
AGTGGTCTGCACTTTATCCGCCTCCATCCAGTCTATTAATTTGCGGGAAGCTAGAGTAGTTCCGAGTTAATAGTTTGGCAACGTTGTTGCCA  
TTGCTGACGAGCATCGTGGTGCACGCTCGTGGTATGGCTTCACTCAGCTCCGTTCCCAACGATCAAGGCGAGTTACATGATCCCCATGTTGTGCAA  
AAAAGCGTTAGTCTTCCGTCCTCCGATCGTTGTCAGAAGTAAAGTTGGCCGAGTGTATCACTCATGGTTATGGCAGCACTGCATAATTTCTTACTGT  
ATGCCATCCGTAAGATGCTTTTCTGTGACTGGTGAAGTCAACCAAGTCACTCTGAGAATAGTGTATGCGCGACCCGAGTTGCTCTTGGCCGGCGTCAACAC  
GGGATAATACCGCGCCACATAGCAAACTTTAAAGTGTCTCATTTGGAAAACGTTCTTCCGGGGGAAAACCTCTCAAGGATCTTACCGCTGTTGAGATCCAG  
TCGATGTAACCCACTCGTGCACCCACTGATCTTTCAGACTTTTACTTTTACCAGGCTTTCGGGTGAGCAAAAACAGGAAGGCAAAATGCCGCAAAAAG  
GGAAATAGGGCGACCGAAATGTTGAATACTCATACTCTTCTTTTCAATATTATGAAGCATTATCAGGGTTATTGTCTCATGAGCGGATACATATTTG  
AATGTATTTAGAAAAATAACAAATAGGGTTCCGCGCACATTTCCCGAAAAGTGCACCTGACGCTAAGAAACCATTTATCATGACATTAACCTATAA  
AAATAGGCGTATCACGAGGCCCTTCTGCTTCAAGAA

## References

1. Bett AJ, Haddara W, Prevec L and Graham FL. (1994) *Proc Natl Acad Sci U S A*. **91**:8802-6 (Homologous recombination in packaging cell line)
2. He, T. C., Zhou, S., da Costa, L. T., Yu, J., Kinzler, K. W. *et al.* (1998) *Proc Natl Acad Sci U S A* **95**:2509-14. (pAdEasy System)
3. R D Anderson, R E Haskell, H Xia, B J Roessler and B L Davidson (2000) *Gene Ther.* **7**:1034-8. (RAPAd® System).

## Recent Product Citations

1. Ansari, S. A. *et al.* (2016). The role of putative phosphatidylserine-interactive residues of tissue factor on its coagulant activity at the cell surface. *PLoS One*. doi:10.1371/journal.pone.0158377.
2. Wang, X. & Astrof, S. (2016). Neural crest cell-autonomous roles of fibronectin in cardiovascular development. *Development*. **143**:88-100.
3. Bae, E. J. *et al.* (2015). Cell models to study cell-to-cell transmission of  $\alpha$ -synuclein. *Methods Mol Biol*. **1345**:291-298.
4. Suchanek, A. L. & Salati, L. M. (2015). Construction and evaluation of an adenoviral vector for the liver-specific expression of the serine/arginine-rich splicing factor, SRSF3. *Plasmid*. doi:10.1016/j.plasmid.2015.07.004.
5. Wang, S. *et al.* (2015). Glycoprotein from street rabies virus BD06 induces early and robust immune responses when expressed from a non-replicative adenovirus recombinant. *Arch Virol*. doi:10.1007/s00705-015-2512-1.
6. Li, M. *et al.* (2014). Bisphenol AF-induced endogenous transcription is mediated by ER $\alpha$  and ERK1/2 activation in human breast cancer cells. *PLoS One*. **9**:e94725.
7. Kim, S. C. *et al.* (2014). All-trans-retinoic acid ameliorates hepatic steatosis in mice by a novel transcriptional cascade. *Hepatology*. **59**:1750-1760.

8. Zheng, H. et al. (2014). Inhibition of endometrial cancer by n-3 polyunsaturated fatty acids in preclinical models. *Cancer Prev Res (Phila)*. **7**:824-834.
9. Logan, S. et al. (2014). Endoplasmic reticulum microenvironment and conserved histidines govern ELOVL4 fatty acid elongase activity. *J. Lipid Res*. **55**:698-708.
10. Liu, Q. et al. (2013). Evaluation of rabies biologics against irkut virus isolated in China. *J. Clin. Microbiol*. **51**:3499-3504.
11. Logan, S. et al. (2013). Deciphering mutant ELOVL4 activity in autosomal-dominant Stargardt Macular Dystrophy. *PNAS*. **110**:5446-5451.

### **Notice to Purchaser**

This product is sold for research and development purposes only and is not to be incorporated into products for resale without written permission from Cell Biolabs. The patented RAPAd® technology is covered by a license from University of Iowa. By the use of this product you accept the terms and conditions of all applicable Limited Use Label Licenses. You may contact our Business Development department at [busdev@cellbiolabs.com](mailto:busdev@cellbiolabs.com) for information on sublicensing this technology.

### **Warranty**

These products are warranted to perform as described in their labeling and in Cell Biolabs literature when used in accordance with their instructions. THERE ARE NO WARRANTIES THAT EXTEND BEYOND THIS EXPRESSED WARRANTY AND CELL BIOLABS DISCLAIMS ANY IMPLIED WARRANTY OF MERCHANTABILITY OR WARRANTY OF FITNESS FOR PARTICULAR PURPOSE. CELL BIOLABS' sole obligation and purchaser's exclusive remedy for breach of this warranty shall be, at the option of CELL BIOLABS, to repair or replace the products. In no event shall CELL BIOLABS be liable for any proximate, incidental or consequential damages in connection with the products.

### **Contact Information**

Cell Biolabs, Inc.  
7758 Arjons Drive  
San Diego, CA 92126  
Worldwide: +1 858-271-6500  
USA Toll-Free: 1-888-CBL-0505  
E-mail: [tech@cellbiolabs.com](mailto:tech@cellbiolabs.com)  
[www.cellbiolabs.com](http://www.cellbiolabs.com)

©2008-2018: Cell Biolabs, Inc. - All rights reserved. No part of these works may be reproduced in any form without permissions in writing.