

RPA859Hu03 50µg

Recombinant Mannose Associated Serine Protease 2 (MASP2)

Organism Species: Homo sapiens (Human)

Instruction manual

FOR IN VITRO USE AND RESEARCH USE ONLY

NOT FOR USE IN CLINICAL DIAGNOSTIC PROCEDURES

11th Edition (Revised in May, 2016)

[PROPERTIES]

Source: Prokaryotic expression.

Host: *E. coli*

Residues: Ile445~Ile683

Tags: N-terminal His-Tag

Tissue Specificity: Liver, Urine.

Subcellular Location: Secreted.

Purity: >98%

Traits: Freeze-dried powder

Buffer formulation: PBS, pH7.4, containing 1mM DTT, 5% trehalose, 0.01% sarcosyl and Proclin300.

Original Concentration: 200ug/mL

Applications: SDS-PAGE; WB; ELISA; IP; CoIP; Purification; Amine Reactive Labeling.

(May be suitable for use in other assays to be determined by the end user.)

Predicted isoelectric point: 5.7

Predicted Molecular Mass: 27.4kDa

Accurate Molecular Mass: 27kDa as determined by SDS-PAGE reducing conditions.

[USAGE]

Reconstitute in PBS (pH7.4) to a concentration of 0.1-1.0 mg/mL. Do not vortex.

[STORAGE AND STABILITY]

Storage: Avoid repeated freeze/thaw cycles.

Store at 2-8°C for one month.

Aliquot and store at -80°C for 12 months.

Stability Test: The thermal stability is described by the loss rate. The loss rate was determined by accelerated thermal degradation test, that is, incubate the protein at 37°C for 48h, and no obvious degradation and precipitation were observed. The loss rate is less than 5% within the expiration date under appropriate storage condition.

[SEQUENCE]

```

                                                    IYGGQK
AKPGDFPWQV LILGGTTAAG ALLYDNWVLT AAHAVYEQKH DASALDIRMG
TLKRLSPHYT QAWSEAVFIH EGYTHDAGFD NDIALIKLNN KVVINSNITP
ICLPRKEAES FMRTDDIGTA SGWGLTQRGF LARNLMYVDI PIVDHQKCTA
AYEKPPYPRG SVTANMLCAG LESGGKDSER GDSGGALVFL DSETERWFGV
GIVSWGSMNC GEAGQYGVYT KVINYIPWIE NII
```

[IDENTIFICATION]

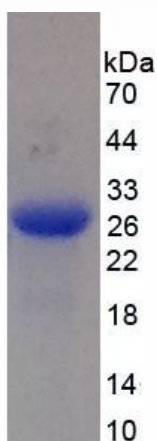


Figure 1. SDS-PAGE