

RPB815Ra02 50µg

Recombinant Interleukin 6 Receptor (IL6R)

Organism Species: *Rattus norvegicus* (Rat)

Instruction manual

FOR RESEARCH USE ONLY

NOT FOR USE IN CLINICAL DIAGNOSTIC PROCEDURES

12th Edition (Revised in Aug, 2016)

[PROPERTIES]

Source: Prokaryotic expression

Host: *E.coli*

Residues: Ala19~Ala348

Tags: N-terminal His Tag

Subcellular Location: Membrane

Purity: > 97%

Traits: Freeze-dried powder

Buffer formulation: PBS, pH7.4, containing 0.01% SKL, 5% Trehalose and Proclin300.

Original Concentration: 200µg/mL

Applications: Positive Control; Immunogen; SDS-PAGE; WB.

(May be suitable for use in other assays to be determined by the end user.)

Predicted isoelectric point: 6.1

Predicted Molecular Mass: 37.4kDa

Accurate Molecular Mass: 40kDa as determined by SDS-PAGE reducing conditions.

[USAGE]

Reconstitute in 10mM PBS (pH7.4) to a concentration of 0.1-1.0 mg/mL. Do not vortex.

[STORAGE AND STABILITY]

Storage: Avoid repeated freeze/thaw cycles.

Store at 2-8°C for one month.

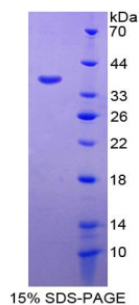
Aliquot and store at -80°C for 12 months.

Stability Test: The thermal stability is described by the loss rate. The loss rate was determined by accelerated thermal degradation test, that is, incubate the protein at 37°C for 48h, and no obvious degradation and precipitation were observed. The loss rate is less than 5% within the expiration date under appropriate storage condition.

[SEQUENCE]

AL VLGSCRALEV ANGTVTSLPG ATVTLICPGK
 EAAGNATIHV VYSGSQSREW TTTGNTLVLR AVQVNDTGHY LCFLDDHLVG
 TVPLLVDVPP EEPKLSCFRK NPLVNAFCEW HPSSTPSPTT KAVMFAKKIN
 TTNGKSDFQV PCQYSQQLKS FSCEVEILEG DKVYHIVSLC VANSVGSRSS
 HNVVFQSLKM VQPDPPANLV VSAIPGXPRW LKVSQWDPES WDPSYYLLQF
 ELRYRPVWSK XFTVWPLQVA QHQCVIHDAL RGVKHVVQVR GKEEFDIGQW
 SKWSPEVTGT PWLAEPRTTP AGIPGNPTQV SVEDYDNHED QYGSSTEA

[IDENTIFICATION]



[IMPORTANT NOTE]

The kit is designed for research use only, we will not be responsible for any issue if the kit was used in clinical diagnostic or any other procedures.