

**rP93022Ra01 100µg**  
**Fibrinogen Like Protein 1 (FGL1)**  
**Organism: Rattus norvegicus (Rat)**  
***Instruction manual***

FOR IN VITRO USE AND RESEARCH USE ONLY  
NOT FOR USE IN CLINICAL DIAGNOSTIC PROCEDURES

---

6th Edition (Revised in March, 2013)

## [ **PROPERTIES** ]

**Residues:** Leu23~Val314 (Accession # Q5M8C6),  
with two N-terminal Tags, His-tag and GST-tag.

**Host:** *E. coli*

**Subcellular Location:** Secreted.

**Purity:** >95%

**Endotoxin Level:** <1.0EU per 1µg  
(determined by the LAL method).

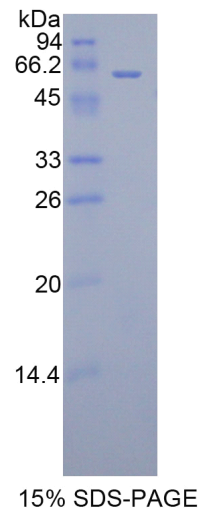
**Formulation:** Supplied as lyophilized form in PBS,  
pH7.4, containing 5% sucrose, 0.01% sarcosyl.

**Predicted isoelectric point:** 5.9

**Predicted Molecular Mass:** 60.8kDa

**Applications:** SDS-PAGE; WB; ELISA; IP.

(May be suitable for use in other assays to be determined by the end user.)



## [ **USAGE** ]

Reconstitute in sterile PBS, pH7.2-pH7.4.

## [ STORAGE AND STABILITY ]

### **Storage: Avoid repeated freeze/thaw cycles.**

Store at 2-8°C for one month.

Aliquot and store at -80°C for 12 months.

**Stability Test:** The thermal stability is described by the loss rate of the target protein. The loss rate was determined by accelerated thermal degradation test, that is, incubate the protein at 37°C for 48h, and no obvious degradation and precipitation were observed. (Referring from China Biological Products Standard, which was calculated by the Arrhenius equation.) The loss of this protein is less than 5% within the expiration date under appropriate storage condition.

## [ SEQUENCES ]

The target protein is fused with two N-terminal Tags, His-tag and GST-tag, its sequence is listed below.

MRNKKFELGL EFPNLPYYID GDVKLTQSMA IIRYIADKHN MLGGCPKERA EISMLEGAVL  
DIRYGVSRIA YSKDFETLKV DFLSKLPEML KMFEDRLCHK TYLNGDHVTH PDFMLYDALD  
VVLYMDPMCL DAFPKLVCFK KRIEAIQID KYLKSSKYIA WPLQGQWQATF GGGDHPKSD  
GSTSGSGHHH HHSAGLVPR GSTAIGMKET AAKFERQHM DSPDLGTLEV  
LFQGPLGS-LGDENCLQ EQVRLRAQVR QLETRVKQQQ VVIAQLLHEK EVQFLDRGQE  
DSFIDLGGKR HYADCSEIYN DGFKHSGFYK IKPLQSLAEF SVYCDMSDGG GWTVIQRSD  
GSENFNRGWN DYENGFNFV QSNGEYWLGN KNINLLTMQG DYTLKIDLTD FEKNSRFAQY  
EKFKVGDEKS FYELNIGEYS GTAGDSLSTG FHPEVQWWAS HQTMKFSTRD  
RDNDNYNGNC AEEEQSGWWF NRCHSANLNG VYYQGPYRAE TDNGVVWYTW  
RGWWYSLKSV VMKIRPSDFI PNIV