

**RPD372Hu01 50µg**

**Recombinant Kallikrein 12 (KLK12)**

**Organism Species: *Homo sapiens* (Human)**

***Instruction manual***

FOR IN VITRO USE AND RESEARCH USE ONLY  
NOT FOR USE IN CLINICAL DIAGNOSTIC PROCEDURES

---

12th Edition (Revised in Aug, 2016)

**[ PROPERTIES ]**

**Source:** Prokaryotic expression

**Host:** *E.coli*

**Residues:** Ala18~Asn248

**Tags:** N-terminal His Tag

**Subcellular Location:** Secreted

**Purity:** > 90%

**Traits:** Freeze-dried powder

**Buffer formulation:** 100mMNaHCO<sub>3</sub>, 500mMNaCl, pH8.3, containing 1mM DTT, 0.01% SKL, 5% Trehalose and Proclin300.

**Original Concentration:** 200µg/mL

**Applications:** Positive Control; Immunogen; SDS-PAGE; WB.

(May be suitable for use in other assays to be determined by the end user.)

**Predicted isoelectric point:** 7.7

**Predicted Molecular Mass:** 28.7kDa

**Accurate Molecular Mass:** 29kDa as determined by SDS-PAGE reducing conditions.

**[ USAGE ]**

Reconstitute in 100mM NaHCO<sub>3</sub>, 500mM NaCl (pH8.3) to a concentration of 0.1-1.0 mg/mL. Do not vortex.

**[ STORAGE AND STABILITY ]**

**Storage:** Avoid repeated freeze/thaw cycles.

Store at 2-8°C for one month.

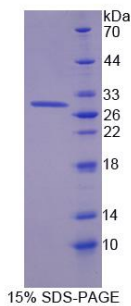
Aliquot and store at -80°C for 12 months.

**Stability Test:** The thermal stability is described by the loss rate. The loss rate was determined by accelerated thermal degradation test, that is, incubate the protein at 37°C for 48h, and no obvious degradation and precipitation were observed. The loss rate is less than 5% within the expiration date under appropriate storage condition.

**[ SEQUENCE ]**

ATP KIFNGTECGR NSQPWQVGLF EGTSLRCCGV  
LIDHRWVLT AHCSGSRYWV RLGEHSLSQL DWTEQIRHSG FSVTHPGYLG  
ASTSHEHDLR LLRLRLPVRV TSSVQPLPLP NDCATAGTEC HVSGWGITNH  
PRNPFDPDLLQ CLNLSIVSHA TCHGVYPGRI TSNMVCAGGV PGQDACQGDS  
GGPLVCGGVL QGLVSWGSVG PCGQDGIPGV YTYICKYVDW IRMIMRNN

**[ IDENTIFICATION ]**



**[ IMPORTANT NOTE ]**

The kit is designed for in vitro and research use only, we will not be responsible for any issue if the kit was used in clinical diagnostic or any other procedures.