

**RPJ331Bo01 100µg**

**Recombinant Casein Kappa (CSN3)**

**Organism Species: *Bos taurus*; Bovine (Cattle)**

***Instruction manual***

**FOR RESEARCH USE ONLY**

**NOT FOR USE IN CLINICAL DIAGNOSTIC PROCEDURES**

---

12th Edition (Revised in Aug, 2016)

## **[ PROPERTIES ]**

**Source:** Prokaryotic expression

**Host:** *E.coli*

**Residues:** Gln22~Val190

**Tags:** N-terminal His and GST Tag

**Subcellular Location:** Secreted

**Purity:** > 90%

**Traits:** Freeze-dried powder

**Buffer formulation:** 20mM Tris, 150mM NaCl, pH8.0, containing 0.01% SKL, 5% Trehalose.

**Original Concentration:** 200µg/mL

**Applications:** Positive Control; Immunogen; SDS-PAGE; WB.

(May be suitable for use in other assays to be determined by the end user.)

**Predicted isoelectric point:** 5.9

**Predicted Molecular Mass:** 49.0kDa

**Accurate Molecular Mass:** 50kDa as determined by SDS-PAGE reducing conditions.

## **[ USAGE ]**

Reconstitute in 20mM Tris, 150mM NaCl (pH8.0) to a concentration of 0.1-1.0 mg/mL. Do not vortex.

## **[ STORAGE AND STABILITY ]**

**Storage:** Avoid repeated freeze/thaw cycles.

Store at 2-8°C for one month.

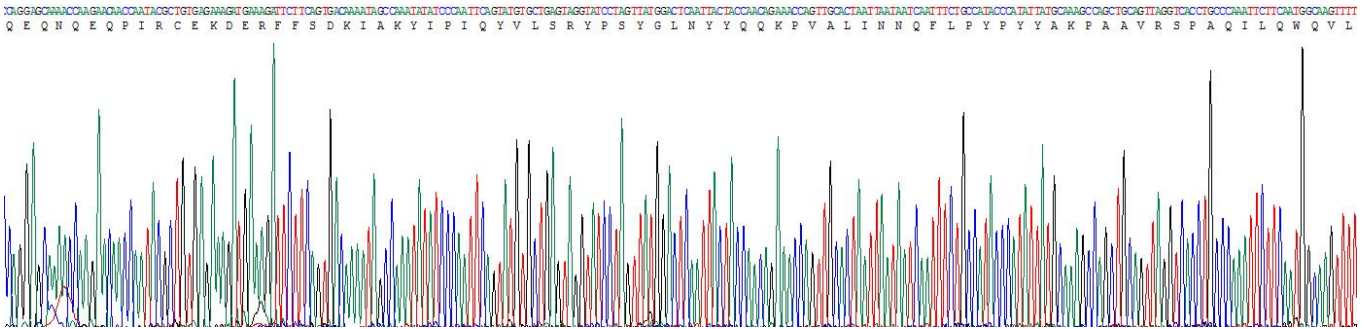
Aliquot and store at -80°C for 12 months.

**Stability Test:** The thermal stability is described by the loss rate. The loss rate was determined by accelerated thermal degradation test, that is, incubate the protein at 37°C for 48h, and no obvious degradation and precipitation were observed. The loss rate is less than 5% within the expiration date under appropriate storage condition.

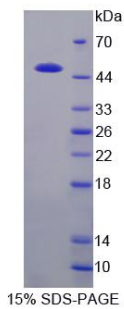
## **[ SEQUENCE ]**

QEQNQEQPI RCEKDERFFS DKIAKYIPIQ  
YVLSRYPSYG LNYQQQKQVA LINNQFLPYP YYAKPAAVRS PAQILQWQVL  
SNTVPAKSCQ APTTMMARHP HPHLSFMAIP PKKNQDKTEI PTINTIASGE  
PTSTPTTEAV ESTVATLEDS PEVIESPPEI NTVQVTSTAV

**[ IDENTIFICATION ]**



### Figure. Gene Sequencing (Extract)



**[ IMPORTANT NOTE ]**

The kit is designed for research use only, we will not be responsible for any issue if the kit was used in clinical diagnostic or any other procedures.