

**RPL024Hu01 50µg**

**Recombinant Sal Like Protein 4 (SALL4)**

**Organism Species: *Homo sapiens (Human)***

***Instruction manual***

FOR IN VITRO USE AND RESEARCH USE ONLY  
NOT FOR USE IN CLINICAL DIAGNOSTIC PROCEDURES

---

12th Edition (Revised in Aug, 2016)

## **[ PROPERTIES ]**

**Source:** Prokaryotic expression

**Host:** *E.coli*

**Residues:** Lys96~Gly359

**Tags:** N-terminal His Tag

**Tissue Specificity:** Testis

**Subcellular Location:** Plasma, Nucleus

**Purity:** > 90%

**Traits:** Freeze-dried powder

**Buffer formulation:** 20mM Tris, 150mM NaCl, pH8.0, containing 1mM EDTA, 1mM DTT, 0.01% SKL, 5% Trehalose and Proclin300.

**Original Concentration:** 200µg/mL

**Applications:** Positive Control; Immunogen; SDS-PAGE; WB.

(May be suitable for use in other assays to be determined by the end user.)

**Predicted isoelectric point:** 8.3

**Predicted Molecular Mass:** 31.5kDa

**Accurate Molecular Mass:** 35kDa as determined by SDS-PAGE reducing conditions.

### **Phenomenon explanation:**

The possible reasons that the actual band size differs from the predicted are as follows:

1. Splice variants: Alternative splicing may create different sized proteins from the same gene.
2. Relative charge: The composition of amino acids may affects the charge of the protein.
3. Post-translational modification: Phosphorylation, glycosylation, methylation etc.
4. Post-translation cleavage: Many proteins are synthesized as pro-proteins, and then cleaved to give the active form.
5. Polymerization of the target protein: Dimerization, multimerization etc.

## **[ USAGE ]**

Reconstitute in 20mM Tris, 150mM NaCl (pH8.0) to a concentration of 0.1-1.0 mg/mL. Do not

vortex.

### [ **STORAGE AND STABILITY** ]

**Storage:** Avoid repeated freeze/thaw cycles.

Store at 2-8°C for one month.

Aliquot and store at -80°C for 12 months.

**Stability Test:** The thermal stability is described by the loss rate. The loss rate was determined by accelerated thermal degradation test, that is, incubate the protein at 37°C for 48h, and no obvious degradation and precipitation were observed. The loss rate is less than 5% within the expiration date under appropriate storage condition.

### [ **SEQUENCE** ]

KNPPV  
LIMNDSEGPV PSEDFSGAVL SHQPTSPGSK DCHRENGGSS EDMKEKPDAE  
SVVYLKTETA LPPTPQDISY LAKGKVANTN VTLQALRGTK VAVNQRSADA  
LPAPVPGANS IPWVLEQILC LQQQQLQQIQ LTEQIRIQVN MWASHALHSS  
GAGADTLKTL GSHMSQQVSA AVALLSQKAG SQGLSLDALK QAKLPHANIP  
SATSSLSPGL APFTLKP DGT RVLPNVMSRL PSALLPQAPG SVLFQSPFST  
VALDTSKKG

### [ **IDENTIFICATION** ]

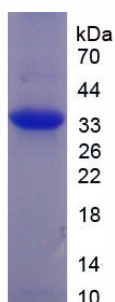


Figure. SDS-PAGE

### [ **IMPORTANT NOTE** ]

The kit is designed for in vitro and research use only, we will not be responsible for any issue if the kit was used in clinical diagnostic or any other procedures.