

**RPP155Hu01 10µg**

**Recombinant Wingless Type MMTV Integration Site Family, Member 3A (WNT3A)**

**Organism Species: Homo sapiens (Human)**

***Instruction manual***

FOR IN VITRO USE AND RESEARCH USE ONLY  
NOT FOR USE IN CLINICAL DIAGNOSTIC PROCEDURES

---

12th Edition (Revised in Aug, 2016)



## **[ PROPERTIES ]**

**Source:** Prokaryotic expression

**Host:** *E.coli*

**Residuess:** Ser19~Lys352

**Tags:** N-terminal His Tag

**Tissue Specificity:** Secreted, Extracellular matrix

**Purity:** > 97%

**Traits:** Freeze-dried powder

**Buffer formulation:** 100mMNaHCO<sub>3</sub>, 500mMNaCl, pH8.3, containing 1mM DTT, 0.01% SKL, 5% Trehalose and Proclin300.

**Original Concentration:** 200µg/mL

**Applications:** Positive Control; Immunogen; SDS-PAGE; WB.

(May be suitable for use in other assays to be determined by the end user.)

**Predicted isoelectric point:** 8.6

**Predicted Molecular Mass:** 41.1kDa

**Accurate Molecular Mass:** 41kDa as determined by SDS-PAGE reducing conditions.

## **[ USAGE ]**

Reconstitute in 100mM NaHCO<sub>3</sub>, 500mM NaCl (pH8.3) to a concentration of 0.1-1.0 mg/mL. Do not vortex.

## **[ STORAGE AND STABILITY ]**

**Storage:** Avoid repeated freeze/thaw cycles.

Store at 2-8°C for one month.

Aliquot and store at -80°C for 12 months.

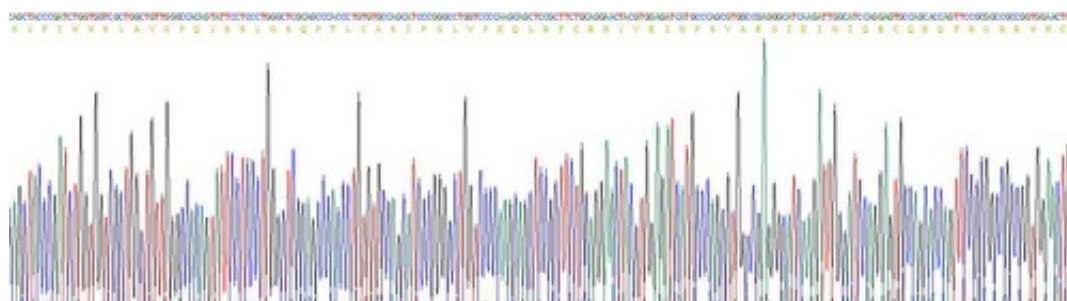
**Stability Test:** The thermal stability is described by the loss rate. The loss rate was determined by accelerated thermal degradation test, that is, incubate the protein at 37°C for 48h, and no obvious degradation and precipitation were observed. The loss rate is less than 5% within the expiration date under appropriate storage condition.



**[ SEQUENCE ]**

	SY	PIWWSLAVGP	QYSSLGSQPI	LCASIPGLVP
KQLRFCRNYV	EIMPSVAEGI	KIGIQECQHQ	FRGRRWNCTT	VHDSLAIFGP
VLDKATRESA	FVHAIASAGV	AFAVTRSCAE	GTAATCGCSS	RHQGSPGKGW
KWGGCSEDIE	FGGMVSREFA	DARENRPDAR	SAMNRHNNEA	GRQAIASHMH
LKCKCHGLSG	SCEVKTCWWS	QPDFRAIGDF	LKDKYDSASE	MVVEKHRESR
GWVETLRPRY	TYFKVPTERD	LVYYEASPNF	CEPNPETGSF	GTRDRTCNSV
SHGIDGCDLL	CCGRGHNARA	ERRREKCRCV	FHWCCYVSCQ	ECTRVYDVHT
CK				

**[ IDENTIFICATION ]**



### Figure. Gene Sequencing (Extract)

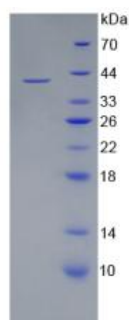


Figure. SDS-PAGE