



Taq DNA polymerase Economy (+dNTPs), with Robust buffer

BACKGROUND

Thermus aquaticus DNA polymerase (**Taq** DNA polymerase) was expressed in *E. coli* in large quantities and highly purified. The enzyme has thermostable DNA polymerase activity and the MW is 94 kDa. This enzyme is suitable for PCR reactions; capable of amplifying DNA with various primers.

- Applications:**
- 1) High-throughput PCR
 - 2) Colony PCR
 - 3) Incorporation of dUTP, dITP, and fluorescence-labeled nucleotides
 - 4) Primer extension
 - 5) Addition of a single nucleotide (adenosine) at the 3'-blunt ends (for cloning into TA vector)

General composition of PCR reaction mixture (total 50 ul)	
Taq DNA polymerase (5 units/ul)	0.25 ul*
10 x Robust Buffer (<i>Taq</i>)	5 ul
2.5mM (each) dNTPs	4 ul
Template	< 500 ng
Primer 1	0.2~1.0 μM (final conc.)
Primer 2	0.2~1.0 μM (final conc.)
Sterile distilled water	up to 50 ul

*Use of excess amount of the enzyme is not recommended.

Size: 200 UNIT

Concentration: 5 units / ul, where one unit is defined as the amount of enzyme that can incorporate 10 nmols of total dNTPs into an acid-insoluble material in 30 minutes at 74°C when activated salmon sperm DNA was used as template/primer.

Form: 20mM Tris-HCl (pH 8.0), 100mM KCl, 0.1mM EDTA, 1mM DTT, 50% glycerol, 0.5% Tween20, 0.5% Igepal CA-630.

Quality Assurance: Greater than 95% purity as determined by SDS-PAGE (CBB staining) (Fig.1)
The absence of endonucleases and exonucleases was confirmed.

PCR Test: Good amplification result was obtained in PCR reaction using λDNA as a template up to 14 kb (Fig.2).

Storage: -20°C

- Reagents Supplied with Enzyme:**
1. 10 x Robust Buffer (*Taq*)
 2. 2.5mM(each) dNTPs

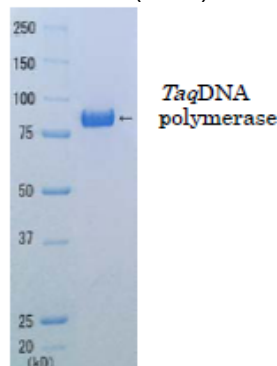


Fig.1 SDS-PAGE analysis of Taq DNA polymerase

Cautions for usage of Robust Buffer (*Taq*)/without GC Enhancer

Robust Buffer induces maximum enzymatic activity. Therefore, care should be taken to avoid production of undesirable smear bands in gel electrophoresis analysis by longer than optimal reaction time. We recommend about 5 to 10 seconds / kb elongation time for template up to 8 kb, and about 15 seconds / kb for up to 14 kb. We will recommend roughly the same elongation time to be set with 2-step PCR (shuttle PCR) and 3-step PCR. Extend the elongation time by short steps when amplification is not seen.

The results of your experiments can be observed more rapidly by adopting 2-step PCR.

1. Examples of PCR conditions for the amplification of various sizes of λDNA

Protocol for PCR

2kb, 4kb 94 ° C 1min 95 ° C 5sec 65 ° C 20sec } 25cycles	6kb 94 ° C 1min 95 ° C 5sec 65 ° C 1min } 25 cycles	8kb 94 ° C 1min 95 ° C 5sec 65 ° C 1min 20sec } 25 cycles
10kb, 12kb 94 ° C 1min 98 ° C 5sec 68 ° C 3min } 30 cycles 72 ° C 3min	14kb 94 ° C 1min 98 ° C 5sec 68 ° C 4min } 30 cycles 72 ° C 4min	

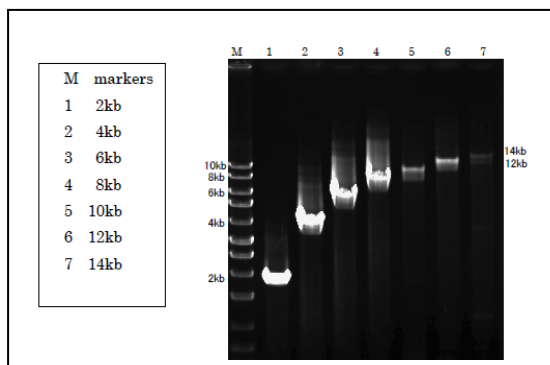


Fig.2 PCR products obtained by using Robust buffer (agarose gel electrophoresis)

For research use only. Not for clinical diagnosis.

Manufactured by BioAcademia, Inc.



COSMO BIO Co., LTD.
 Inspiration for Life Science
 TOYO 2CHOME, KOTO-KU, TOKYO, 135-0016, JAPAN
 URL: <http://www.cosmobio.co.jp> e-mail: export@cosmobio.co.jp
 [Outside Japan] Phone : +81-3-5632-9617 [国内連絡先] Phone : +81-3-5632-9610
 FAX : +81-3-5632-9618 FAX : +81-3-5632-9619