



COSMO BIO CO., LTD.

Inspiration for Life Science

MONOCLONAL ANTIBODY

Catalog No. ABN-M02-HP

## Anti human PON1 (Paraoxonase-1)

### BACKGROUND

Paraoxonase 1 (PON1) is synthesized primarily in the liver and secreted into the plasma. This enzyme is associated with Apolipoprotein A-1 on High Density Lipoproteins (HDL) and hydrolyses paraoxon to p-nitrophenol. The PON1 polymorphism may be responsible for neurodegeneration and considered to be an independent risk factor for Parkinson's disease. Recently it is reported that PON1 suppresses oxidation of Low Density Lipoproteins (LDL) by experiment with knock-out mouse and suggested it works as antioxidant and prevents inflammatory reaction in the blood vessel by hydrolyzing oxidized lipid in LDL.

<b>Product type</b>	Primary antibodies
<b>Host</b>	Mouse
<b>Source</b>	Purified ascites
<b>Form</b>	Liquid
	1×PBS, pH7.2
<b>Volume</b>	100µg
<b>Concentration</b>	1mg/ml
<b>Specificity</b>	Human PON1
<b>Antigen</b>	PON1 (Paraoxonase-1)
<b>Clone</b>	4C2
<b>Isotype</b>	IgG1

### Application notes

WB

#### Recommended use

#### Recommended dilutions

Western blotting, 1/1,000. Predicted molecular weight : 39.7kDa (see figure below)

Optimal dilutions/concentrations should be determined by the end user.

#### Staining Pattern

### Cross reactivity

Human (Not tested in other species)

### Storage

Store below -20°C (below -70°C for prolonged storage). Aliquot to avoid cycles of freeze/thaw.

### References

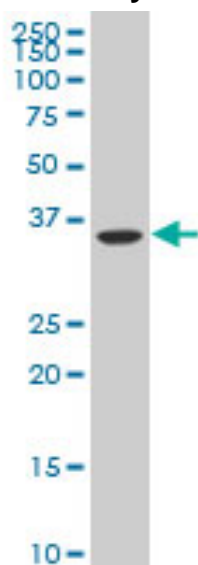
1) Akhmedova SN et al. Paraoxonase 1 Met-Leu 54 polymorphism is associated with Parkinson's disease. J Neurol Sci 184:179-182 (2001).

2) Kondo I & Yamamoto M Genetic polymorphism of paraoxonase 1 (PON1) and susceptibility to Parkinson's disease. Brain Res 806:271-273 (1998).

*For research use only. Not for clinical diagnosis.*



Human Ovary cancer



Primary antibody: Anti human PON1 monoclonal antibody (×1,000)  
Secondary antibody: Goat anti-mouse IgG-HRP (×2,500)



COSMO BIO Co., LTD.

Inspiration for Life Science

TOYO 2CHOME, KOTO-KU, TOKYO, 135-0016, JAPAN

URL: <http://www.cosmobio.co.jp>

e-mail: [export@cosmobio.co.jp](mailto:export@cosmobio.co.jp)

[Outside Japan] Phone : +81-3-5632-9617

[国内連絡先] Phone : +81-3-5632-9610

FAX : +81-3-5632-9618

FAX : +81-3-5632-9619