



**MONOCLONAL ANTIBODY**

*For research use only. Not for clinical diagnosis.*

**Catalog No. CE-008A**

# Anti-Nup62/p62 antibody

## BACKGROUND

Nup62/p62 is a major component of the NPC (Nuclear pore complex), has been reported to interact directly with several nuclear transport factors, including importin-beta and NTF2.

<b>Product type</b>	Primary antibodies
<b>Host</b>	Rat
<b>Source</b>	Culture supernatant
<b>Form</b>	Liquid Purified monoclonal antibody in PBS, 50% Glycerol, 0.05% NaN <sub>3</sub> .
<b>Volume</b>	100 µl
<b>Concentration</b>	1 mg/ml
<b>Specificity</b>	Nup62/p62
<b>Antigen</b>	Recombinant GST-fused N-terminus fragment of human Nup62/p62 (aa 1-300).
<b>Clone</b>	8A12
<b>Isotype</b>	IgG2a

**Application notes** WB, ICC Not tested for other applications.

**Recommended dilutions**

Western blotting, 1/1,000 to 1/5,000

Immunocytochemistry, 1/100 to 1/500

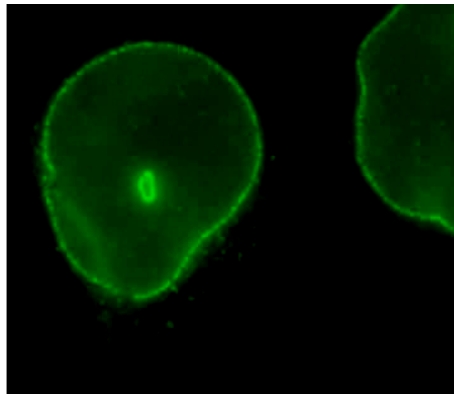


Fig.1 Immunocytochemistry/ Immunofluorescence  
- Nup62/p62 antibody (8A12) HeLa cells

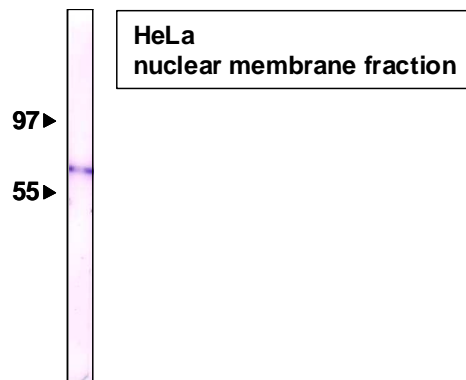


Fig.2 Western blot - Nup62/p62 antibody (8A12)  
HeLa cell nuclear membrane fraction

Optimal dilutions/concentrations should be determined by the end user.

**Cross reactivity** Human, Mouse Other species have not been tested.

**Storage** Store below -20°C (below -70°C for prolonged storage).

**References**  
1) Fukuhara et al., (2006) Hybridoma, 25, 51-59.  
2) Maeshima et al., (2006) J. Cell Sci. 119, 4442-4451.  
This antibody is used in ref.1 and 2.

*For research use only. Not for clinical diagnosis.*



**COSMO BIO Co., LTD.**

Inspiration for Life Science

TOYO 2CHOME, KOTO-KU, TOKYO, 135-0016, JAPAN

URL: <http://www.cosmobio.co.jp> e-mail: [export@cosmobio.co.jp](mailto:export@cosmobio.co.jp)

[Outside Japan] Phone : +81-3-5632-9617 [国内連絡先] Phone : +81-3-5632-9610

FAX : +81-3-5632-9618

FAX : +81-3-5632-9619