



**POLYCLONAL ANTIBODY**

*For research use only. Not for clinical diagnosis.*

**Catalog No. KZ-HS-P04**

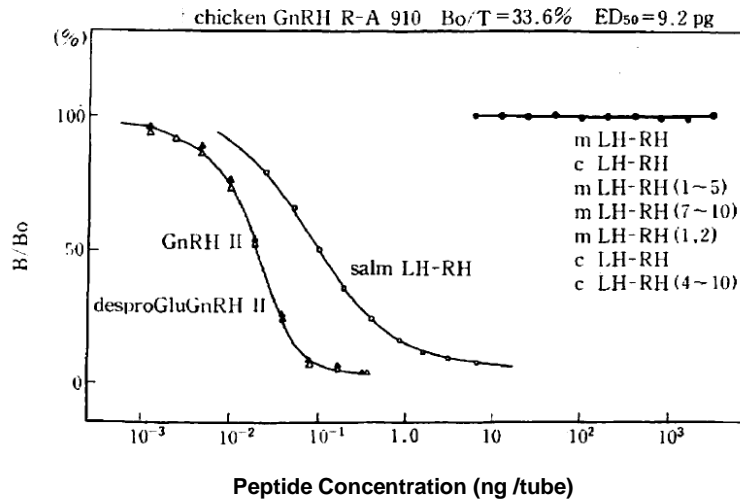
# Anti chicken des pyroGlu GnRH II (c GnRH II)

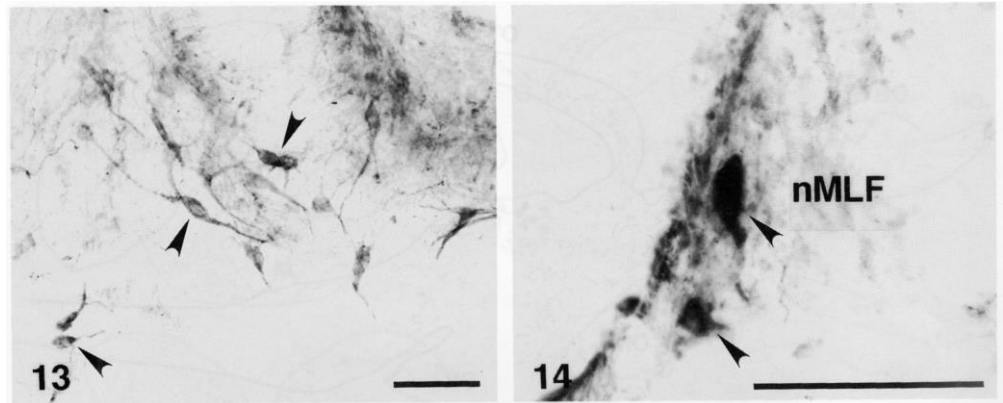
**BACKGROUND**

Gonadotropin Releasing Hormone (GnRH), also known as Luteinizing-hormone-releasing-hormone (LHRH) and luteinizing hormone-releasing hormone (LHRH), is a tropic peptide hormone responsible for the release of follicle-stimulating hormone (FSH) and Luteinizing Hormone (LH) from the anterior pituitary. GnRH is synthesized and released from neurons within the hypothalamus. The peptide belongs to the gonadotropin-releasing hormone family.

<b>Product type</b>	Primary antibodies
<b>Host</b>	Rabbit
<b>Form</b>	Serum
<b>Volume</b>	50 µl
<b>Antigen</b>	Synthetic chicken GnRH II (2-10)GnRH II
<b>Cross reactivity</b>	Chicken GnRH II, most mammals, vertebrates
<b>Application notes</b>	Recommended dilutions

**RIA : 1/100,000 - 1/400,000**  
**IHC : 1/5,000 - 1/20,000**  
**Neutralization : n/d**





### Storage

Store below -20°C (below -70°C for prolonged storage).  
Aliquot to avoid cycles of freeze/thaw.

### References

- 1) Miyamoto K, Hasegawa Y, Nomura M, Igarashi M, Kangawa K & Matsuo H (1984) Identification of the second gonadotropin-releasing hormone in chicken hypothalamus: evidence that gonadotropin secretion is probably controlled by two distinct gonadotropin-releasing hormones in avian species. *Proc Natl Acad Sci USA*. **81**: 3874-3878. PMID: [6427779](#)
- 2) Amano M, Oka Y, Aida K, Okumoto N, Kawashima S & Hasegawa Y (1991) Immunocytochemical demonstration of salmon GnRH and chicken GnRH-II in the brain of masu salmon, *Oncorhynchus masou*. *J Comp Neurol*. **314**: 587-597. PMID: [1814976](#)
- 3) Kobayashi M, Amano M, Kim MH, Furukawa K, Hasegawa Y & Aida K (1994) Gonadotropin-releasing hormones of terminal nerve origin are not essential to ovarian development and ovulation in goldfish. *Gen Com Endocrinol*. **95**: 192-200. PMID: [7958749](#)

*For research use only. Not for clinical diagnosis.*



**COSMO BIO Co., LTD.**

[JAPAN]  
TOYO EKIMAE BLDG. 2-20, TOYO 2-CHOME,  
KOTO-KU. TOKYO 135-0016, JAPAN  
Phone: +81-3-5632-9610  
FAX: +81-3-5632-9619  
URL: <https://www.cosmobio.co.jp/>



**COSMO BIO USA**

[Outside Japan]  
2792 Loker Ave West, Suite 101  
Carlsbad, CA 92010, USA  
email: [info@cosmobioussa.com](mailto:info@cosmobioussa.com)  
Phone/FAX: (+1) 760-431-4600  
URL: [www.cosmobioussa.com](http://www.cosmobioussa.com)