

CARD Cold Transport Kit

Cat. No. KYD-006-EX

Last Updated: 2015/4/22

www.cosmobio.com

【 I 】 Purpose of using the CARD Cold Transport Kit

The CARD Cold Transport Kit is a kit specially-designed for the cheap, safe transport of mouse cauda epididymides and embryos at cold temperatures. The CARD Cold Transport Kit will allow you to reduce costs related to the transport of live mice while also eliminating the risk of mouse fatalities or escapes during transport. You can also prevent the transmission of pathogens using the CARD Cold Transport Kit.

【 II 】 Kit Components

- ◆ Foam transport box (1)
- ◆ Cold packs (4 large packs, 2 small packs)
- ◆ Thermos bottle (1)
- ◆ Paper box (1)
- ◆ Shock-absorbing material (1)



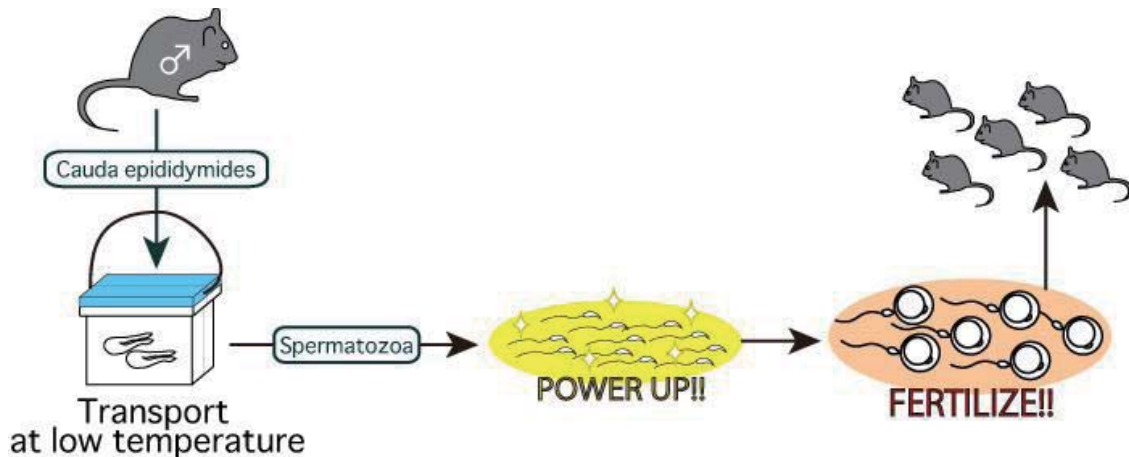
Note: We recommend usage of “CARD Cold Transport Kit” (Cat. No. KYD-006EX) with our “Cold storage solution for cauda epididymides”(Cat. No. KYD-007-EX). Please note that the shipping condition for KYD-006-EX is room temperature, however, since KYD-007-EX must be shipped at 4C, the addition of blue ice will raise the shipping fee of your order.

【 III 】 Kit Features

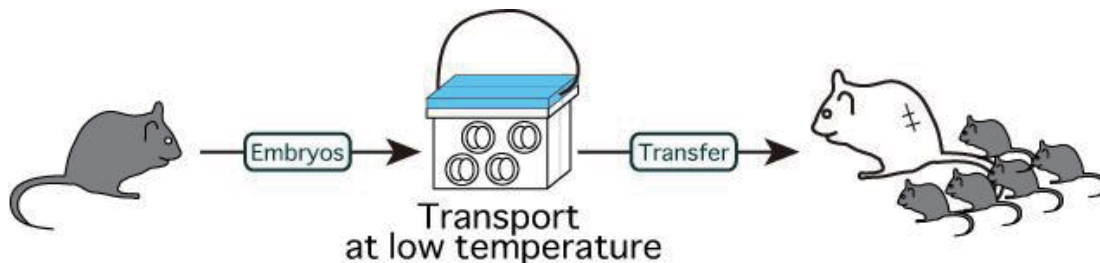
- ◆ The CARD Cold Transport Kit uses a three-layer system (cold packs, thermos bottle, foam transport box) to ensure that the contents remain at a constant temperature.
- ◆ The CARD Cold Transport Kit is designed so that the cold packs, thermos bottle, foam transport box and the sample to be transported fit snugly. This prevents saccadic movement during transport, thus ensuring the safe transport of your samples.

【 IV 】 Example of Usage

It is possible to produce mouse pups easily without the presence of a male mouse by using just the cauda epididymides of a male mouse, which have been sent safely and cheaply at cold temperatures using our cold transport kit. Simply preincubate the spermatozoa taken from the cauda epididymides in FERTIUP[®] Mouse Sperm Preincubation Medium, then carry out in vitro fertilization using CARD MEDIUM, and finally transfer the embryos obtained into recipient parents.



It is possible to transport whole colonies of mice by using the CARD Cold Transport Kit to transport embryos at cold temperatures instead of live mice, then having the recipient institution transfer the embryos into recipient parents to obtain pups.



【 V 】 References

Takeo T., and Nakagata N et al. 2009. Birth of mice from vitrified/warmed 2-cell embryos transported at a cold temperature. *Cryobiology*. 58(2): 196-202

Takeo T., and Nakagata N et al. 2010. Short-term storage and transport at cold temperatures of 2-cell mouse embryos produced by cryopreserved sperm. *J Am Assoc Lab Anim Sci*. 49(4): 415-419