

#RESVO IGKR-P1 IgG
Lot No. 0361-01

For Research Use only



COSMO BIO CO., LTD.
Inspiration for Life Science

Product Description IGKR-P1 IgG

Rabbit anti Immunoglobulin κ light chain
polyclonal antibody

Product: Rabbit anti-Immunoglobulin κ light chain polyclonal antibody

Code No.: IGKR-P1 IgG (**Lot No.:** 0361-01)

Form: Anti-IgG

Quantity: 100ul

Species reactivity: Rat, Mouse, (Marmoset)

Working dilutions: Western blot (Dot blot): 1: 500~2000

Storage : Make small portions upon arrival. For long storage, keep at $-80\text{ }^{\circ}\text{C}$ (or at least $-20\text{ }^{\circ}\text{C}$).
For continuous use keeps at $4\text{ }^{\circ}\text{C}$. Avoid repeated freezing and thawing.

Description:

This polyclonal antibody was produced against rat immunoglobulin κ light chain peptide (SVTDQDSKDYMSSTLSL)^{1,2}. It cross-react with some other species (see immunoblot in figure 1). It can be used western blot and dot blot.

Limitations and warranty:

Our products are **For RESEARCH USE ONLY** and are not approved for clinical diagnosis, drug use or therapeutic products. No products are to be construed as a recommendation for use in violation of any patients. We make no representations, warranties or assurances as to the accuracy or completeness of information provide on our data sheet and website. Our warranty is limited to the actual price paid for the products. RESVO Inc. is not liable for any property damage, personal injury, time or effort or economic loss caused by our products.

References:

1. Sheppard HW, Gutman GA. *Proc Natl Acad Sci U S A*. Nov 1981; 78(11): 7064-7068
2. Oh-Nishi A, Koga K, Maeda T, Suhara T. *Neurosci Res*. Jul 15 2016

Western blot

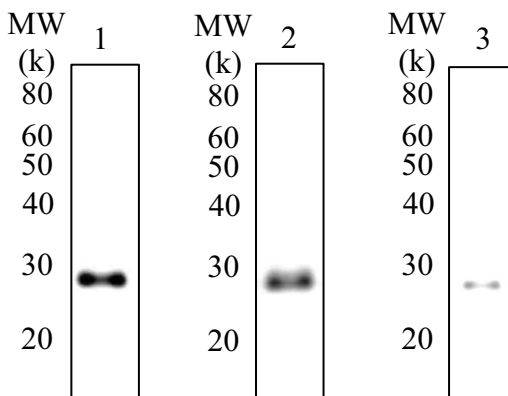


Figure 1 Western blot of serum of various species with the rabbit anti-immunoglobulin κ light chain polyclonal antibody 1: Rat; 2: Mouse; 3: Marmoset. In the species, Only a band at $<30\text{ k}$ (neighboring 24 k) is detected.

#RESVO IGKR-P1 IgG
Lot No. 0361-01



Procedure for western blot of sera with rabbit anti-immunoglobulin κ light chain polyclonal antibodies

Materials :

- Rat or mouse sera
- Extracting buffer solutions (100 mM Tris-HCl, pH 8.8, 2% SDS, 20% sucrose, 0.06% BPB, 7M urea, 2M thiourea and 0.1M DTT)
- SDS-PAGE gel (10-20% gradient or 12.5% isocratically)
- PVDF or nitrocellulose membrane
- Blocking buffer (BSA or skim milk etc)
- RESVO rabbit anti- immunoglobulin κ light chain polyclonal antibody
- HRP conjugated anti-rabbit IgG
- ECL western blot substrate
- etc

Methods:

1. Sera mixed at a volume ratio of 1:1 with protein extracting buffer solutions (Vortex more than 15 min)
2. The mixture was subjected to SDS-PAGE gel .
3. Electrophoresed proteins were transferred from the SDS-PAGE gel to a PVDF (or nitrocellulose) membrane.
3. The membrane is blocked for 1 hr at room temperature in a blocking buffer solution (Including BSA or skim milk etc).
4. The membrane was then incubated overnight at 4°C in a blocking buffer solution containing 1:500-2000 diluted anti-immunoglobulin κ light chain polyclonal antibody and finally transferred into a blocking buffer solution containing a HRP conjugated anti-rabbit IgG.
6. Chemiluminescence from HRP elicited by ECL western blot substrate was detected by western blot imager.

Notice:

Rat or mouse serum samples should be diluted from 10-100 times with PBS etc, because rodent serum includes a high concentration of immunoglobulin κ light chain.

Reference:

Oh-Nishi A, Koga K, Maeda T, Suhara T. *Neurosci Res.* Jul 15 2016

*RESVO Inc. is not liable for any property damage, personal injury, time or effort or economic loss caused by the procedure.