

## 15-HETE ELISA kit

Catalog Number: **15H1/15H11/15H21/15H101**

Store at -20°C.

FOR RESEARCH USE ONLY



### Introduction

This competitive ELISA kit is for determination of 15-HETE (15-hydroxyeicosatetraenoic acid) levels in biological samples. The specificity of the 15-HETE ELISA was investigated using authentic 15-HETE and fatty acids which, based on their structure, might be anticipated to compete with 15-HETE for binding to antibodies against 15-HETE. Anti-15-HETE does not cross-react with 12-HETE or 20-HETE.

15-HETE is formed from arachidonic acid (AA) by 15-lipoxygenase (LOX) activity (1). It has been shown that 15-HETE is involved in a variety of pathological conditions including cancer (2), hypertension (3), allergic rhinitis (4) and arthritis (5). Interestingly, 15-LOX also produces lipoxins A4 and B4. This 15(S)-HETE ELISA can also be used for measurements of 15-LOX activity.

This competitive ELISA can be used for triplicate analyses of up to 24 samples and contains one 96 well plate, one vial of 15-HETE standard, one vial of 15-HETE-conjugated HRP and buffers for sample and HRP dilutions, and plate washing.

### Storage and Stability

This kit will obtain optimal results if all of the components are stored at the proper temperature prior to use. Items should be stored at the designated temperatures upon receipt of this kit. All components are stored below -20°C and should not be re-frozen and thawed more than necessary.

### Materials Provided

Part Number	Item	Description	Quantity
<b>Additional Required Materials (Not Provided)</b>			
2	15-HETE Standard (2 µL)	Stock standard at a concentration of 1 mg/mL	1
3	15-HETE HRP Conjugates (12 µL)		
	Sample Dilution	1000 X concentrated solution	1
4	Buffer (25 mL)	10 X solution of Tris-buffered saline with preservatives	1
5	HRP Buffer (15 mL)	1 X solution of Tris-buffered saline with preservatives	1
6	Wash Buffer Solution (25 mL)	10 X solution of Tris-buffered saline with detergents and preservatives	1
7	TMB Substrate (24 mL)	A solution of TMB (tetra methyl benzadine)	1

- Plate reader with a 450 nm filter
- An 8-channel adjustable pipetter and an adjustable pipetter
- Storage bottles
- Costar® cluster tubes (1.2 mL) and microcentrifuge tubes
- Deionized water

## Precautions

---

- Please read all instructions carefully before beginning the assay.
- The reagents in this kit have been tested and formulated to perform optimally. This kit may not perform correctly if any of the reagents are replaced or any of the procedures are modified.
- This kit is intended for research use only and is not to be used as a diagnostic.

## Procedural Notes

---

- Remove all of the reagents required, including the TMB, and allow them to equilibrate to room temperature before proceeding with the assay.
- It is necessary to thoroughly mix the concentrated buffer solutions. A stir bar is contained within each buffer solution.

## Sample Preparations

---

There are different protocols for isolating and purifying 15-HETE depending on the medium in which it is in. Listed below are the different protocols. For optimal results follow the appropriate protocol based on the biological sample present.

### 15-HETE measurement in cells

1. Collect and homogenize and/or sonicate the cells using a solution containing a final concentration of ~0.1 mM TPP (triphenylphosphine, 0.03-0.05 mg/mL). TPP is an antioxidant, which looks like a precipitate in samples because it does not easily dissolve. Before using the stored samples containing TPP, spin samples to separate the precipitated TPP from sample solution.
2. Acidify the whole homogenized cells with acetic acid to a pH of approximately 3-4. Measure using standard pH paper.
3. Extraction with ethyl acetate. Add an equal volume of ethyl acetate to the homogenized cells and vortex very well. Place the upper organic phase into a fresh clean tube after centrifugation. Then add another equal volume of ethyl acetate to the homogenized cells to start the second-time extraction. It is strongly recommended that extraction is performed three times.
4. Evaporate the pooled ethyl acetate from the extractions until all has dried up under argon or nitrogen gas.
5. **Saponification if needed (see below)**
6. Add 20 µL ethanol, or N, N-dimethyl-formamide (DMF), to dissolve the dried-up residue for reconstitution. Add 0.5 mL of 1x Sample Dilution Buffer (provided in kit) to make a solution. Load 100 µL in each well, in triplicates, on the ELISA plate. (Note: We recommend measuring a different dilution of sample in attempt to fit the results to the standard curve. e.g., load 3 wells with 50 µL of the rest of sample plus 50 µL of 1x Sample Dilution Buffer, and 3 wells with 10 µL of the rest of sample plus 90 µL of 1x Sample Dilution Buffer.)
7. Perform the ELISA for 15-HETE (according to the instructions of the manufacturer).

**Saponification** (to cleave fatty acid from glycerol backbone):

1. Dissolve dried fatty acids (obtained from 3X ethyl acetate extractions) in 2 mL of 20% KOH solution (make working solution: 1 mL of 2 M KOH + 4 mL methanol so that the final conc. of KOH = 0.4 N).
2. Vortex and incubate for 1 h at 50°C.
3. Add 1.5X H<sub>2</sub>O to the solution and adjust pH with 20% formic acid to pH ~5.
4. Re-extract the solution with ethyl acetate (1 part aqueous solution + 1 part ethyl acetate) and dry.

#### **15-HETE measurement in tissues**

1. Homogenize 1 g of tissue, 4 mL of H<sub>2</sub>O, and 0.01 mg TPP.
2. Acidify the homogenate by adding 8 µL of acetic acid to each homogenate.
3. Extract with an equal amount of ethyl acetate, vortex thoroughly, spin down, and collect the organic phase. Repeat this extraction twice more and combine all of the organic phases.
4. Dry the organic phase with argon or nitrogen gas.
5. **Saponification if needed (see 15-HETE measurement in cells)**
6. Dissolve the dried residue from above step # 4 with ethanol or DMF. (Add approximately 20 µL of ethanol or DMF to reconstitute the dried-up residue.)
7. Dilute further with 1x Sample Dilution Buffer: Add approximately 0.5 mL of 1x Sample Dilution Buffer and centrifuge at 10,000 rpm for five minutes at room temperature. The supernatant will be used for ELISA.
8. Perform the ELISA for 15-HETE (according to the instructions of the manufacturer).

#### **15-HETE measurement in plasma or serum**

1. Combine 1.8 mL of plasma (adjusted with approximately 20 µL of acetic acid to pH 4) and 1.8 mL of ethyl acetate. Vortex thoroughly. Centrifuge at 2000 rpm for ten minutes at 22°C. Three phases should result:
  - i. Upper organic phase – ethyl acetate phase (lipoproteins)
  - ii. Interphase – proteins
  - iii. Lower phase – aqueous phase
2. Collect the upper organic phase (a) and set aside.
3. Discard the interphase. Transfer the lower phase with a glass pipette to a new tube, and repeat the ethyl acetate extraction step 2 more times.
4. Evaporation of pooled organic phase: There should be approximately 5-6 mL of the ethyl acetate phase (a). Dry the pooled organic phase in a Speedvac to get the extracted sediment (b).
5. Saponification (to cleave fatty acid from glycerol backbone): Dissolve the dried-up residues (b) in 2 mL of 20% KOH solution (for preparation see 15-HETE in cells). Vortex thoroughly and incubate for 1 h at 50°C. This will yield an aqueous solution (c).
6. Dilute 2 mL of the aqueous solution (c) with 3 mL of H<sub>2</sub>O. Adjust the pH using 20% formic acid (132 µL) to pH ~5.5. Add ethyl acetate (1 part aqueous solution (c) + 1 part ethyl acetate), vortex thoroughly, and centrifuge at 2000 rpm for ten minutes at 22°C. Repeat the procedure twice more using an equal volume of ethyl acetate per sample. Collect the upper phase with saponified lipids.
7. Dry the pooled ethyl acetate upper phase (d) in a Speedvac, yielding the dried sample-sediment (e). Store the sediment (e) at -20°C. For ELISA assay, dissolve the dried sample-residue (e) in 20 µL of ethanol, then add 130 µL of 1x Sample Dilution Buffer.
8. For the competitive 15-HETE ELISA, the above 150 µL sample needs to be further diluted: Dilute 1:4 (e.g., 80 µL sample + 320 µL 1x Sample Dilution Buffer). Check the final pH (should be pH 7.4). When calculating the concentration, consider the dilution factor. In this case, 150 µL total sample volume from 1.8 mL plasma (12-fold concentration) and then, 80 sample in 400 µL SDB (5-fold dilution). Since, the samples are concentrated 2.4-fold; to get the actual concentration, you must divide by 2.4.
9. Perform the ELISA for 15-HETE (according to the instructions of the manufacturer).

## Assay Preparations

The solid 96-well plate and TMB solution are provided ready to use. The preparations of other assay reagents are detailed below.

**Wash Buffer:** Mix the solution with a stir bar, applying low heat until a clear colorless solution is obtained. Dilute the entire contents of the Wash Buffer Concentrate (25 mL) with 225 mL of deionized water to yield a final volume of 250 mL of 1 X Wash Buffer. This can then be refrigerated for the entire life of the kit.

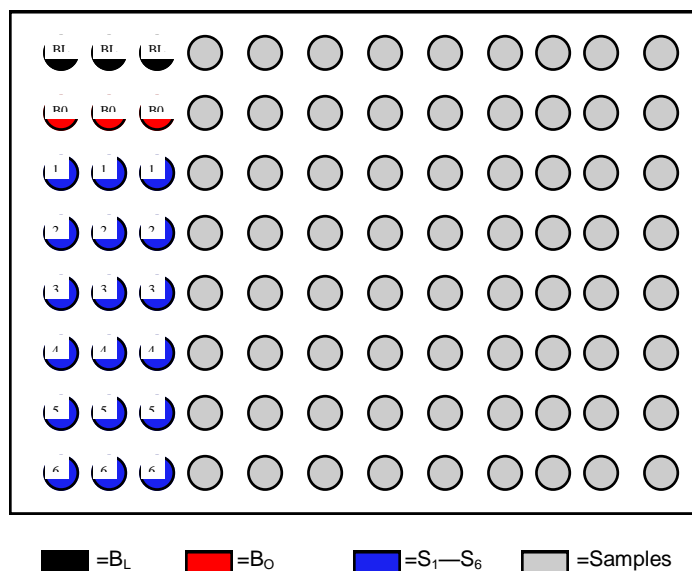
**HRP Conjugate:** Dilute 1 vial of the 15-HETE-HRP conjugate (0.012 mL) with 12.00 mL of 1 X HRP buffer. One vial makes enough conjugate for one plate. The conjugate must be used the same day and should not be stored for later use.

**Standards:** Label 5 microtubes as Standard 1 through Standard 5. Dilute the entire contents of Sample Dilution Stock buffer (25 mL) with 225 mL deionized water to yield a final volume of 250 mL of 1 X Sample Dilution Buffer. Add 0.9 mL of the Sample Dilution Buffer to the microtubes 1 to 5. Spin down the enclosed 12-HETE standard vial (2  $\mu$ L, filled with inert gas) and add 1.998 mL of Sample Dilution Buffer to obtain 2 mL of solution. Label this Standard 6. Add 0.1 mL of the Standard 6 to the microtube labeled Standard 5 and mix thoroughly. Next, add 0.1 mL of Standard 5 into the microtube labeled Standard 4 and mix thoroughly. Continue to serially dilute the standards using 1:10 dilutions for the remaining standards.

**Samples:** Samples can be directly diluted into the 1 X Sample Dilution Buffer if it is in solution. For extracted and dried samples, it is recommended to dissolve the dried-up samples with a minimal amount of ethanol of N, N-dimethyl-formamide (DMF, 10  $\mu$ L to 20  $\mu$ L) and vortex well. Before ELISA assay, add 100  $\mu$ L of 1 X Sample Dilution Buffer to make the stock sample solution ready for quantification with ELISA. The stock sample solution can be further diluted to a proper range of concentration for ELISA test.

## Performing the Assay

**Plate Setup:** Each plate must contain a minimum of three blank wells ( $B_L$ ), three maximum binding wells ( $B_O$ ), and a six point standard curve ( $S_1$ – $S_6$ ). Each sample should be assayed in triplicate. A suggested plate format is shown below:



### Standard Dilutions Table

Standards	Final Concentration (pg/mL)	Add Sample Dilution Buffer (mL)	Serial Dilutions Procedure
No. 6	1,000,000	1.998	2 $\mu$ L of stock solution.
No. 5	100,000	0.9	Add 0.1 mL of No. 6
No. 4	10,000	0.9	Add 0.1 mL of No. 5
No. 3	1,000	0.9	Add 0.1 mL of No. 4
No. 2	100	0.9	Add 0.1 mL of No. 3
No. 1	10	0.9	Add 0.1 mL of No. 2

### Assay Procedure

**Step 1:** Load 200 microliters of Sample Dilution Buffer into the blank ( $B_L$ ) wells and 100 microliters of Sample Dilution Buffer into the maximum binding ( $B_O$ ) wells.

**Step 2:** Load 100 microliters of each of the 15-HETE standards into the appropriate wells.

**Step 3:** Load 100 microliters of each of the samples into the appropriate wells.

**Step 4:** Load 100 microliters of the diluted 15-HETE-HRP conjugate in the  $B_O$  wells, the standard wells, and the sample wells. Do NOT add HRP conjugate into the  $B_L$  wells.

**Step 5:** Incubate the plate at room temperature for two hours.

**Step 6:** Wash the plate three times with 400 microliters of the diluted Wash Buffer per well.

**Step 7:** After the last of the three wash cycles pat the plate dry onto some paper toweling.

**Step 8:** Add 200 microliters of the TMB substrate to all of the wells (including  $B_L$  wells).

**Step 9:** Incubate the plate at room temperature for 15-30 minutes.

**Step 10:** Add 50 microliters of 2 N sulfuric acid to all of the wells.

**Step 11:** Read the plate at 450 nm.

### Calculating the Results

Most plate readers provide data reduction software that can be used to plot the standard curve and determine the sample concentrations. If your plate reader does not have this option, then a data reduction program can be used (4 parameter of log-log curve fit).

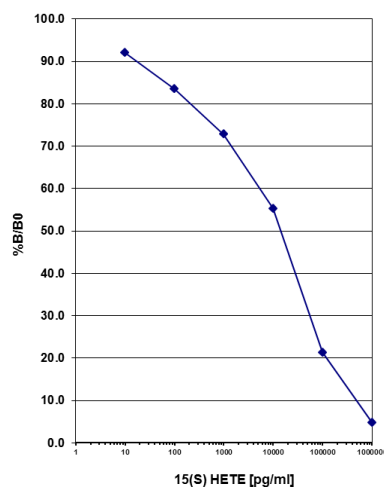
If you do not have these options, the results can be obtained manually as follows:

1. Average the absorbance readings from the blanks and subtract that value from each well of the plate to obtain the corrected readings. (Note: Some plate readers do this automatically. Consult the user manual of your plate reader.)
2. Average the corrected absorbance readings from the  $B_O$  wells. This is your maximum binding.
3. Calculate the %B/ $B_O$  for Standard 1 by averaging the corrected absorbance of the two  $S_1$  wells, divide the average by the maximum binding, then multiply by 100. Repeat this formula for the remaining standards.
4. Plot the %B/ $B_O$  versus the concentration of 15-HETE from the standards using semi-log paper.
5. Calculate the %B/ $B_O$  for the samples and determine the concentrations, utilizing the standard curve.

6. Multiply the concentrations obtained for each of the samples by their corresponding dilution factor.

## Typical Results

---



The data shown here is an example of typical results obtained using the Detroit R & D 15-HETE ELISA kit. These results are only a guideline, and should not be used to determine values from your samples. The user must run their own standard curve every time.

B<sub>L</sub> wells = 0.062

B<sub>0</sub> wells = 2.400

Standard	Concentration	O.D.	%B/B <sub>0</sub>
No. 1	10 pg/mL	2.208	92.0
No. 2	100 pg/mL	2.003	83.5
No. 3	1,000 pg/mL	1.749	72.9
No. 4	10,000 pg/mL	1.327	55.3
No. 5	100,000 pg/mL	.512	21.3
No. 6	1,000,000 pg/mL	.116	4.8

## Specificity of anti-15-HETE

---

Anti-15-HETE showed almost no cross-reactivity with structurally similar 12-HETE .

Eicosanoids	% Binding of control
15-HETE	100.00
12-HETE	3.8

---

## Troubleshooting

---

### No color present in standard wells.

- The HRP conjugate was not added. Redo the assay and add the conjugate at the proper step.
- The HRP conjugate was not incubated for the proper time. Redo the assay and incubate for the proper time.

### No color in any wells, including the TA wells.

- The TMB substrate was not added. Add substrate.
- The TMB substrate was not incubated for the proper time. Continue incubation until desired color is reached.

### The color is faint.

- One or all of the incubation times were cut short. Redo the assay with the proper incubation times.
- The TMB substrate was not warmed up to room temperature. Redo the assay making sure all reagents are at room temperature.
- The lab is too cold. Be sure the lab temperature is between 21-27°C and redo the assay.

### The background color is very high.

- The TMB substrate has been contaminated. Redo the assay with a fresh bottle of substrate.

### Scattered O.D. obtained from the sample.

- Redo assay using an 8-channel pipetman making sure that 8 channels are equal volume while loading.

## References

---

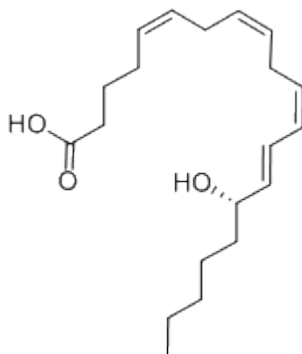
### References

1. Dobrian AD, Lieb DC, Cole BK, Taylor-Fishwick DA, Chakrabarti SK, Nadler JL. Functional and pathological roles of the 12- and 15-lipoxygenases. *Progress in Lipid Research* (2011) 50, 115-131 and references therein.
2. Pidgeon GP, Lysaght J, Krishnamoorthy S, Reynolds JV, O'Byrne K, Nie D, Honn KV. Lipoxygenase metabolism: roles in tumor progression and survival. *Cancer Metastasis Rev* (2007) 26, 503–524 and references therein.
3. M.D. Mitchell and J.M. Koenig. Increased production of 15-hydroxyeicosatetraenoic acid by placentae from pregnancies complicated by pregnancy-induced hypertension
4. Ramis I, Catafau JR, Serra J, Bulbena O, Picado C, Gelpi E. In vivo release of 15-HETE and other arachidonic acid metabolites in nasal secretions during early allergic reactions. *Prostaglandins* (1991) 42(5):411-20
5. Fogh, K., et. al. 15-Hydroxy-eicosatetraenoic acid (15-Hete) inhibits carrageenan-induced experimental arthritis and reduces synovial fluid leukotriene B<sub>4</sub> (LTB<sub>4</sub>). (1989) *Prostaglandins*

## Warranty

---

Detroit R&D, Inc., makes no warranty of any kind expressed, or implied, including, but not limited to the warranties of fitness for a particular purpose and merchantability.



Detroit R&D, Inc.

Metro Center For High Technology Bldg. (MCHT)  
2727 Second Ave. Suite 4113  
Detroit, MI 48201

Phone: 313.961.1606  
Fax: 313.963.7130  
E-mail: [info@detroitrandd.com](mailto:info@detroitrandd.com)  
[www.DetroitRandD.com](http://www.DetroitRandD.com)