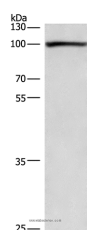


## cPLA2 Polyclonal Antibody

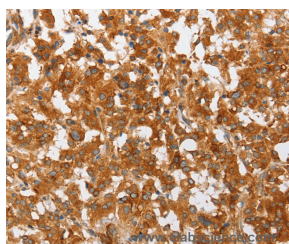
<b>Catalog No.</b>	E-AB-11099	<b>Reactivity</b>	H,M,R
<b>Storage</b>	Store at -20°C. Avoid freeze / thaw cycles.	<b>Host</b>	Rabbit
<b>Applications</b>	WB,IHC,ELISA	<b>Isotype</b>	IgG

**Note:** Centrifuge before opening to ensure complete recovery of vial contents.

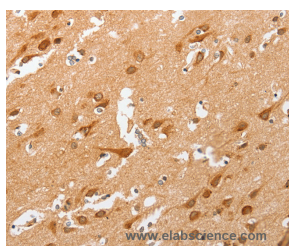
### Images



Western Blot analysis of 293T cell using cPLA2 Polyclonal Antibody at dilution of 1:750



Immunohistochemistry of paraffin-embedded Human thyroid cancer using cPLA2 Polyclonal Antibody at dilution of 1:50



Immunohistochemistry of paraffin-embedded Human brain using cPLA2 Polyclonal Antibody at dilution of 1:50

### Immunogen Information

<b>Immunogen</b>	Recombinant protein of human PLA2G4A
<b>Gene Accession</b>	BC114340
<b>Swissprot</b>	P47712
<b>Synonyms</b>	PLA2G4,cPLA2-alpha

### Product Information

<b>Calculated MW</b>	85kDa
<b>Buffer</b>	PBS with 0.05% sodium azide and 50% glycerol, PH7.4
<b>Purify</b>	Affinity purification
<b>Dilution</b>	WB 1:500-1:2000, IHC 1:50-1:200

### Background

This gene encodes a member of the cytosolic phospholipase A2 group IV family. The enzyme catalyzes the hydrolysis of membrane phospholipids to release arachidonic acid which is subsequently metabolized into eicosanoids. Eicosanoids, including prostaglandins and leukotrienes, are lipid-based cellular hormones that regulate hemodynamics, inflammatory responses, and other intracellular pathways. The hydrolysis reaction also produces lysophospholipids that are converted into platelet-activating factor. The enzyme is activated by increased intracellular Ca<sup>2+</sup> levels and phosphorylation, resulting in its translocation from the cytosol and nucleus to perinuclear membrane vesicles.

### For Research Use Only

Thank you for your recent purchase.  
If you would like to learn more about antibodies, please visit [www.elabscience.com](http://www.elabscience.com).

### Focus on your research Service for life science

Applications: WB-Western Blot IHC-Immunohistochemistry IF-Immunofluorescence IP-Immunoprecipitation FC-Flow cytometry ChIP-Chromatin Immunoprecipitation Reactivity: H-Human R-Rat M-Mouse Mk-Monkey Dg-Dog Ch-Chicken Hm-Hamster Rb-Rabbit Sh-Sheep Pg-Pig Z-Zebrafish X-Xenopus C-Cow.