

## SLC8A3 Polyclonal Antibody

catalog number: E-AB-13657

**Note:** Centrifuge before opening to ensure complete recovery of vial contents.

### Description

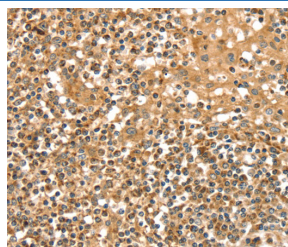
<b>Reactivity</b>	Human;Rat
<b>Immunogen</b>	Synthetic peptide of human SLC8A3
<b>Host</b>	Rabbit
<b>Isotype</b>	IgG
<b>Purification</b>	Affinity purification
<b>Buffer</b>	Phosphate buffered solution, pH 7.4, containing 0.05% stabilizer and 50% glycerol.

### Applications

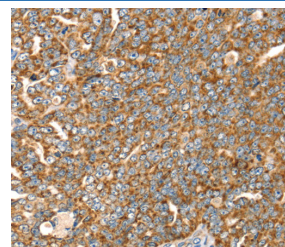
### Recommended Dilution

<b>IHC</b>	1:25-1:100
------------	------------

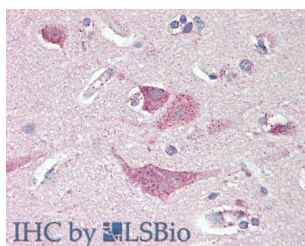
### Data



Immunohistochemistry of paraffin-embedded Human tonsil tissue using SLC8A3 Polyclonal Antibody at dilution 1:35



Immunohistochemistry of paraffin-embedded Human cervical cancer tissue using SLC8A3 Polyclonal Antibody at dilution 1:35



Immunohistochemistry of paraffin-embedded Brain Cortex tissue using SLC8A3 Polyclonal Antibody at dilution of 1:80 (Elabscience Product Detected by Lifespan).

### Preparation & Storage

<b>Storage</b>	Store at -20°C Valid for 12 months. Avoid freeze / thaw cycles.
<b>Shipping</b>	The product is shipped with ice pack, upon receipt, store it immediately at the temperature recommended.

### Background

This gene encodes a member of the sodium/calcium exchanger integral membrane protein family. Na<sup>+</sup>/Ca<sup>2+</sup> exchange proteins are involved in maintaining Ca<sup>2+</sup> homeostasis in a wide variety of cell types. The protein is regulated by intracellular calcium ions and is found in both the plasma membrane and intracellular organellar membranes, where exchange of Na<sup>+</sup> for Ca<sup>2+</sup> occurs in an electrogenic manner. Alternative splicing has been observed for this gene and multiple variants have been described.

### For Research Use Only