

TRIB2 Polyclonal Antibody

catalog number: E-AB-17148

Note: Centrifuge before opening to ensure complete recovery of vial contents.

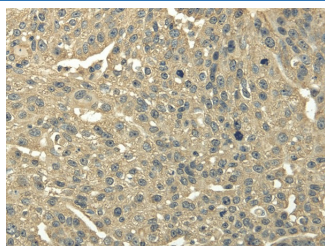
Description

Reactivity	Human;Mouse
Immunogen	Full length fusion protein
Host	Rabbit
Isotype	IgG
Purification	Affinity purification
Buffer	Phosphate buffered solution, pH 7.4, containing 0.05% stabilizer and 50% glycerol.

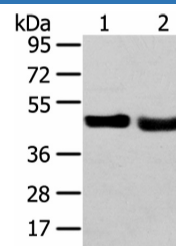
Applications Recommended Dilution

WB	1:1000-5000
IHC	1:25-100

Data



Immunohistochemistry of paraffin-embedded Human breast cancer using TRIB2 Polyclonal Antibody at dilution of 1/30



Western Blot analysis of 231 cell and Human fetal liver tissue using TRIB2 Polyclonal Antibody at dilution of 1/450

Calculated-MW:39 kDa

Preparation & Storage

Storage	Store at -20°C Valid for 12 months. Avoid freeze / thaw cycles.
Shipping	The product is shipped with ice pack, upon receipt, store it immediately at the temperature recommended.

Background

This gene encodes one of three members of the Tribbles family. The Tribbles members share a Trb domain, which is homologous to protein serine-threonine kinases, but lacks the active site lysine and probably lacks a catalytic function. The Tribbles proteins interact and modulate the activity of signal transduction pathways in a number of physiological and pathological processes.

For Research Use Only