

GPR22 Polyclonal Antibody

Catalog Number:E-AB-18022

Note: Centrifuge before opening to ensure complete recovery of vial contents.

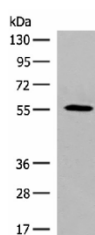
Description

Reactivity	Human;Mouse
Immunogen	Synthetic peptide of human GPR22
Host	Rabbit
Isotype	IgG
Purification	Antigen affinity purification
Conjugation	Unconjugated
Buffer	PBS with 0.05% NaN ₃ and 40% Glycerol,pH7.4

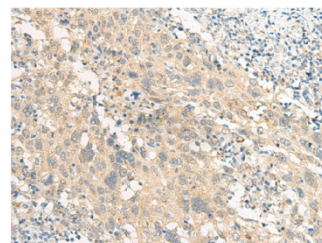
Applications Recommended Dilution

WB	1:500-1:2000
IHC	1:40-1:200

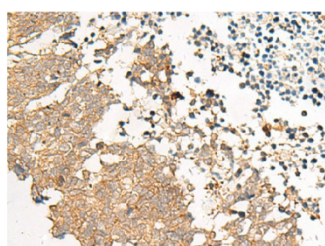
Data



Western blot analysis of HepG2 cell lysate using GPR22 Polyclonal Antibody at dilution of 1:500
Observed-MV:Refer to figures
Calculated-MV:49 kDa



Immunohistochemistry of paraffin-embedded Human cervical cancer tissue using GPR22 Polyclonal Antibody at dilution of 1:50(×200)



Immunohistochemistry of paraffin-embedded Human lung cancer tissue using GPR22 Polyclonal Antibody at dilution of 1:50(×200)

Preparation & Storage

Storage	Store at -20°C Valid for 12 months. Avoid freeze / thaw cycles.
Shipping	The product is shipped with ice pack,upon receipt,store it immediately at the temperature recommended.

Background

This gene is a member of the G-protein coupled receptor 1 family and encodes a multi-pass membrane protein.

For Research Use Only