

IGFBPL1 Polyclonal Antibody

catalog number: E-AB-18105

Note: *Centrifuge before opening to ensure complete recovery of vial contents.*

Description

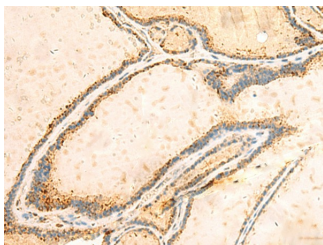
Reactivity	Human
Immunogen	Synthetic peptide of human IGFBPL1
Host	Rabbit
Isotype	IgG
Purification	Antigen affinity purification
Buffer	Phosphate buffered solution, pH 7.4, containing 0.05% stabilizer and 50% glycerol.

Applications

Recommended Dilution

IHC	1:50-1:300
------------	------------

Data



Immunohistochemistry of paraffin-embedded Human thyroid cancer tissue using IGFBPL1 Polyclonal Antibody at dilution of 1:55($\times 200$)

Preparation & Storage

Storage	Store at -20°C Valid for 12 months. Avoid freeze / thaw cycles.
Shipping	The product is shipped with ice pack, upon receipt, store it immediately at the temperature recommended.

Background

IGFBPL1 (Insulin Like Growth Factor Binding Protein Like 1) is a Protein Coding gene. Diseases associated with IGFBPL1 include Umbilical Hernia. Gene Ontology (GO) annotations related to this gene include insulin-like growth factor binding. An important paralog of this gene is IGFBP7.

For Research Use Only