

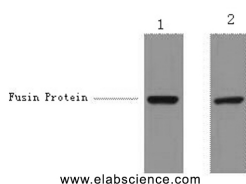
V5-Tag Monoclonal Antibody

Catalog No. E-AB-20010
Storage Store at -20°C. Avoid freeze / thaw cycles.
Applications WB,IF,IP

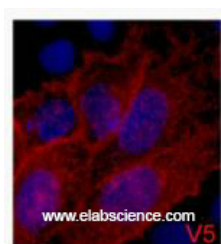
Reactivity
Host Mouse
Isotype IgG

Note: Centrifuge before opening to ensure complete recovery of vial contents.

Images



Western Blot analysis of 1ug V5 fusion protein using V5-Tag Monoclonal Antibody at dilution of 1) 1:5000 2) 1:10000.



Immunofluorescence analysis of 293 cells transfected with a V5 tag protein tissue using V5-Tag Monoclonal Antibody at dilution of 1:2000.

Immunogen Information

Immunogen Synthetic Peptide
Synonyms GKPIPPLLGLDST epitope tag,GKPIPPLLGLDST tag,Protein Rev,Regulator of expression of viral proteins,rev,V5 epitope tag

Product Information

Buffer PBS with 0.02% sodium azide and 50% glycerol pH 7.4.
Purify Protein A purification
Clone No. Clone:8G5
Dilution WB 1:5000-1:10000, IF 1:500-1:2000, IP 1:100-1:300

Background

The antibody is developed against a synthetic 14 aa peptide (GKPIPPLLGLDST), the V5 tag, which presents in many vectors.

For Research Use Only

Thank you for your recent purchase.
If you would like to learn more about antibodies,please visit www.elabscience.com.

Focus on your research Service for life science

Applications:WB-Western Blot IHC-Immunohistochemistry IF-Immunofluorescence IP-Immunoprecipitation FC-Flow cytometry ChIP-Chromatin Immunoprecipitation Reactivity: H-Human R-Rat M-Mouse Mk-Monkey Dg-Dog Ch-Chicken Hm-Hamster Rb-Rabbit Sh-Sheep Pg-Pig Z-Zebrafish X-Xenopus C-Cow.