

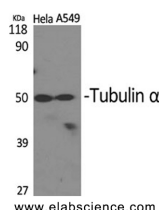
## alpha Tubulin Polyclonal Antibody

**Catalog No.** E-AB-20069  
**Storage** Store at -20°C. Avoid freeze / thaw cycles.  
**Applications** WB,IHC-p,IF,ELISA

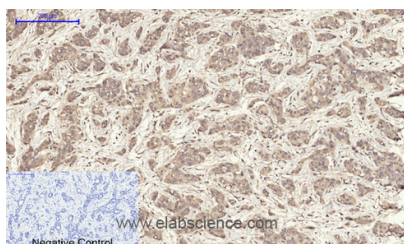
**Reactivity** H,M,R  
**Host** Rabbit  
**Isotype** IgG

**Note:** Centrifuge before opening to ensure complete recovery of vial contents.

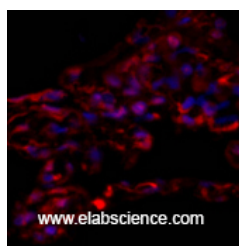
### Images



Western Blot analysis of HeLa, A549 cells using alpha Tubulin Polyclonal Antibody at dilution of 1:2000.



Immunohistochemistry of paraffin-embedded Human liver cancer tissue using alpha Tubulin Polyclonal Antibody at dilution of 1:200.



Immunofluorescence analysis of Human lung tissue using alpha Tubulin Polyclonal Antibody at dilution of 1:200.

### Immunogen Information

**Immunogen** Synthesized peptide derived from the C-terminal region of human Tubulin  $\alpha$   
**Swissprot** Q71U36,P68363  
**Synonyms** TUBA1A,TUBA3,Tubulin alpha-1A chain,Alpha-tubulin 3,Tubulin B-alpha-1,Tubulin alpha-3 chain,TUBA1B,Tubulin alpha-1B chain,Alpha-tubulin ubiquitous,Tubulin K-alpha-1,Tubulin alpha-ubiquitous chain

### Product Information

**Calculated MW** 50kDa  
**Observed MW** 50kDa  
**Buffer** PBS with 0.02% sodium azide, 0.5% protective protein and 50% glycerol, pH7.4  
**Purify** Affinity purification  
**Dilution** WB 1:500-1:2000, IHC 1:100-1:300, IF 1:200-1:1000, ELISA 1:5000

### Background

There are five tubulins in human cells: alpha, beta, gamma, delta, and epsilon. Tubulins are conserved across species. They form heterodimers, which multimerize to form a microtubule filament. An alpha and beta tubulin heterodimer is the basic structural unit of microtubules. The heterodimer does not come apart, once formed. The alpha and beta tubulins, which are each about 55 kDa MW, are homologous but not identical. Alpha, beta, and gamma tubulins have all been used as loading controls. Tubulin expression may vary according to resistance to antimicrobial and antimitotic drugs.

### For Research Use Only

Thank you for your recent purchase.  
If you would like to learn more about antibodies, please visit [www.elabscience.com](http://www.elabscience.com).

### Focus on your research Service for life science

Applications:WB-Western Blot IHC-Immunohistochemistry IF-Immunofluorescence IP-Immunoprecipitation FC-Flow cytometry ChIP-Chromatin Immunoprecipitation Reactivity: H-Human R-Rat M-Mouse Mk-Monkey Dg-Dog Ch-Chicken Hm-Hamster Rb-Rabbit Sh-Sheep Pg-Pig Z-Zebrafish X-Xenopus C-Cow.