

(KO Validated) PTPN2 Polyclonal Antibody

Catalog Number:E-AB-60454



Note: Centrifuge before opening to ensure complete recovery of vial contents.

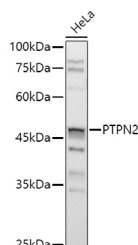
Description

Reactivity	Human,Mouse,Rat
Immunogen	Recombinant fusion protein of human PTPN2
Host	Rabbit
Isotype	IgG
Purification	Affinity purification
Conjugation	Unconjugated
Formulation	PBS with 0.01% thiomersal,50% glycerol,pH7.3.

Applications Recommended Dilution

WB	1:500-1:2000
IF	1:50-1:200

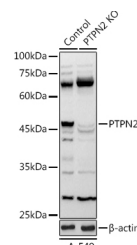
Data



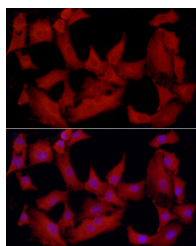
Western blot analysis of extracts of HeLa cells using PTPN2 Polyclonal Antibody at 1:1000 dilution.

Observed Mw:45kDa

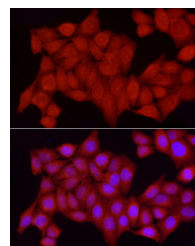
Calculated Mw:40kDa/45kDa/48kDa



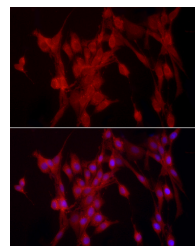
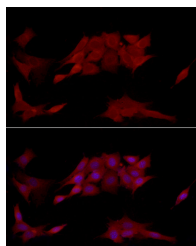
Western blot analysis of extracts from normal (control) and PTPN2 knockout (KO) A-549 cells using PTPN2 Polyclonal Antibody at 1:1000 dilution.



Immunofluorescence analysis of A-549 cells using [KO Validated] PTPN2 Polyclonal antibody at dilution of 1:250 (40x lens). Blue: DAPI for nuclear staining.



Immunofluorescence analysis of HeLa cells using [KO Validated] PTPN2 Polyclonal antibody at dilution of 1:250 (40x lens). Blue: DAPI for nuclear staining.



For Research Use Only

A Reliable Research Partner in Life Science and Medicine

Toll-free: 1-888-852-8623

Web: www.elabscience.com

Tel: 1-832-243-6086

Email: techsupport@elabscience.com

Fax: 1-832-243-6017

(KO Validated) PTPN2 Polyclonal Antibody

Catalog Number: E-AB-60454



Immunofluorescence analysis of NIH/3T3 cells using [KO Validated] PTPN2 Polyclonal antibody at dilution of 1:250 (40x lens). Blue: DAPI for nuclear staining.

Immunofluorescence analysis of PC-12 cells using [KO Validated] PTPN2 Polyclonal antibody at dilution of 1:250 (40x lens). Blue: DAPI for nuclear staining.

Preparation & Storage

Storage Store at -20°C. Avoid freeze / thaw cycles.

Background

The protein encoded by this gene is a member of the protein tyrosine phosphatase (PTP) family. Members of the PTP family share a highly conserved catalytic motif, which is essential for the catalytic activity. PTPs are known to be signaling molecules that regulate a variety of cellular processes including cell growth, differentiation, mitotic cycle, and oncogenic transformation. Epidermal growth factor receptor and the adaptor protein Shc were reported to be substrates of this PTP, which suggested the roles in growth factor mediated cell signaling. Multiple alternatively spliced transcript variants encoding different isoforms have been found. Two highly related but distinctly processed pseudogenes that localize to chromosomes 1 and 13, respectively, have been reported.

For Research Use Only

A Reliable Research Partner in Life Science and Medicine

Toll-free: 1-888-852-8623

Web: www.elabscience.com

Tel: 1-832-243-6086

Email: techsupport@elabscience.com

Fax: 1-832-243-6017