

## (KO Validated) LC3B Polyclonal Antibody

**catalog number: E-AB-63506**

**Note:** Centrifuge before opening to ensure complete recovery of vial contents.

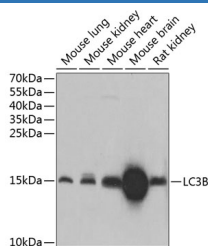
### Description

<b>Reactivity</b>	Human;Mouse;Rat
<b>Immunogen</b>	A synthetic peptide of human LC3B (NP_073729.1).
<b>Host</b>	Rabbit
<b>Isotype</b>	IgG
<b>Purification</b>	Affinity purification
<b>Buffer</b>	Phosphate buffered solution, pH 7.4, containing 0.05% stabilizer and 50% glycerol.

### Applications

Applications	Recommended Dilution
<b>WB</b>	1:500-1:2000
<b>IHC</b>	1:50-1:200
<b>IF</b>	1:50-1:200

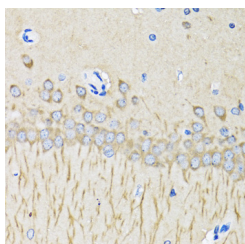
### Data



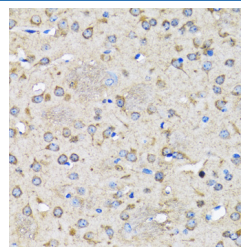
Western blot analysis of extracts of various cell lines using LC3B Polyclonal Antibody at dilution of 1:1000.

**Observed-MW: 14 kDa/15 kDa**

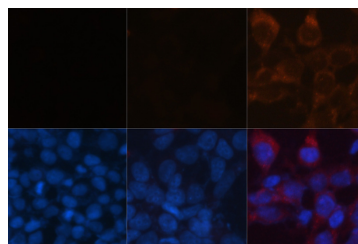
**Calculated-MW: 14 kDa**



Immunohistochemistry of paraffin-embedded Mouse brain using LC3B Polyclonal Antibody at dilution of 1:100 (40x lens).



Immunohistochemistry of paraffin-embedded Rat brain using LC3B Polyclonal Antibody at dilution of 1:100 (40x lens).



Immunofluorescence analysis of LC3B knockout 293T cells treated by chloroquine (top left) and wild-type 293T cells (top middle), wild-type 293T cells treated by chloroquine (top right) using LC3B Polyclonal Antibody at dilution of 1:100. Blue: DAPI for nuclear staining.

### Preparation & Storage

#### Storage

Store at -20°C Valid for 12 months. Avoid freeze / thaw cycles.

#### Shipping

The product is shipped with ice pack, upon receipt, store it immediately at the temperature recommended.

### Background

### For Research Use Only

The product of this gene is a subunit of neuronal microtubule-associated MAP1A and MAP1B proteins, which are involved in microtubule assembly and important for neurogenesis. Studies on the rat homolog implicate a role for this gene in autophagy, a process that involves the bulk degradation of cytoplasmic component.

---

## For Research Use Only

Toll-free: 1-888-852-8623  
Web: [www.elabscience.com](http://www.elabscience.com)

Tel: 1-832-243-6086  
Email: [techsupport@elabscience.com](mailto:techsupport@elabscience.com)

Fax: 1-832-243-6017

Rev. V1.7