

Elab Fluor® 647 Anti-Mouse CD161/NK1.1 Antibody[PK136]

Catalog Number: E-AB-F0987M

Note: Centrifuge before opening to ensure complete recovery of vial contents.

Description

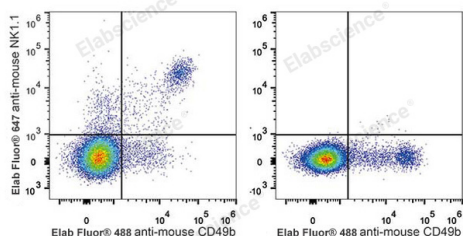
Reactivity	Mouse
Host	Mouse
Isotype	Mouse IgG2a, κ
Clone No.	PK136
Isotype Control	Elab Fluor® 647 Mouse IgG2a, κ Isotype Control[C1.18.4] [Product E-AB-F09802M]
Conjugation	Elab Fluor® 647
Conjugation Information	Elab Fluor® 647 is designed to be excited by the Red laser (627-640 nm) and detected using an optical filter centered near 670 nm (e.g., a 660/20 nm bandpass filter).
Storage Buffer	Phosphate buffered solution, pH 7.2, containing 0.09% stabilizer and 1% protein protectant.

Applications

Recommended usage

FCM	Each lot of this antibody is quality control tested by flow cytometric analysis. The amount of the reagent is suggested to be used 5 μL of antibody per test (million cells in 100 μL staining volume or per 100 μL of whole blood). Please check your vial before the experiment. Since applications vary, the appropriate dilutions must be determined for individual use.
------------	---

Data



C57BL/6 murine splenocytes are stained with Elab Fluor® 647 Anti-Mouse CD161/NK1.1 Antibody and Elab Fluor® 488 Anti-Mouse CD49b Antibody (Left). Splenocytes stained with Elab Fluor® 488 Anti-Mouse CD49b Antibody (Right) are used as control.

Preparation & Storage

Storage	Keep as concentrated solution. This product can be stored at 2-8°C for 12 months. Please protected from prolonged exposure to light and do not freeze.
Shipping	Ice bag

Antigen Information

Alternate Names	CD161 antigen-like family member C;CD161;NK1.1;CD161c;Killer cell lectin-like receptor subfamily B member 1C;Klrb1c;Ly-55c;NKR-P1 40;NKR-P1.9;NKR-P1C
------------------------	---

For Research Use Only

Uniprot ID

P27814;P27812;Q99JB4

Gene ID

17059

Background

NK-1.1 surface antigen, also known as CD161b/CD161c and Ly-55, is encoded by the NKR-P1B/NKR-P1C gene. It is expressed on NK cells and NK-T cells in some mouse strains, including C57BL/6, FVB/N, and NZB, but not AKR, BALB/c, CBA/J, C3H, DBA/1, DBA/2, NOD, SJL, and 129. Expression of NKR-P1C antigen has been correlated with lysis of tumor cells in vitro and rejection of bone marrow allografts in vivo. NK-1.1 has also been shown to play a role in NK cell activation, IFN- γ production, and cytotoxic granule release. NK-1.1 and DX5 are commonly used as mouse NK cell markers.

For Research Use Only