

FITC Anti-Mouse CD18 Antibody[M18/2]

Catalog Number: E-AB-F1113UC

Note: Centrifuge before opening to ensure complete recovery of vial contents.

Description

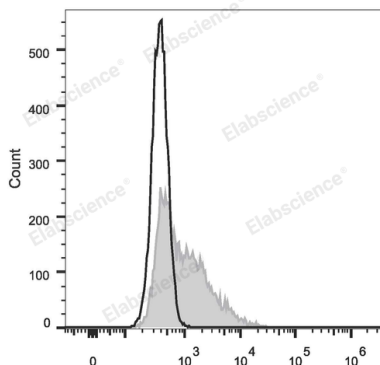
Reactivity	Mouse
Host	Rat
Isotype	Rat IgG2a, κ
Clone No.	M18/2
Isotype Control	FITC Rat IgG2a, κ Isotype Control[2A3] [Product E-AB-F09833C]
Conjugation	FITC
Conjugation Information	FITC is designed to be excited by the Blue laser (488 nm) and detected using an optical filter centered near 530 nm (e.g., a 525/40 nm bandpass filter).
Storage Buffer	Phosphate buffered solution, pH 7.2, containing 0.09% stabilizer and 1% protein protectant.

Applications

Recommended usage

FCM	Each lot of this antibody is quality control tested by flow cytometric analysis. Please check your vial before the experiment. Since applications vary, the appropriate dilutions must be determined for individual use. We suggest each investigator should titrate the reagent to obtain optimal results [The recommended concentration is 0.1-1 $\mu\text{g}/10^6$ cells in 100 μL volume].
------------	---

Data



C57BL/6 murine splenocytes are stained with FITC Anti-Mouse CD18 Antibody (filled gray histogram). Unstained splenocytes (empty black histogram) are used as control.

Preparation & Storage

Storage	Keep as concentrated solution. This product can be stored at 2-8°C for 12 months. Please protected from prolonged exposure to light and do not freeze.
Shipping	Ice bag

Antigen Information

Alternate Names	CD18;Cell surface adhesion glycoproteins LFA-1/CR3/p150+95 subunit beta; Complement receptor C3 subunit beta;Integrin beta-2;Itgb2
Uniprot ID	P11835
Gene ID	16414

For Research Use Only

Background

CD18 is a 95 kD protein, also known as integrin β 2 subunit. It is expressed on all leukocytes. CD18, in association with integrin α chain CD11a, CD11b, and CD11c forms LFA-1, Mac-1, and α X β 2, respectively, and plays an important role in leukocytes adhesion. The CD18 integrin complexes bind ICAM-1 (CD54), ICAM-2 (CD102), ICAM-3 (CD50), iC3b, and fibrinogen.

For Research Use Only