

# Recombinant Human S100A2 Protein

Catalog Number:PKSH033804



**Note:** Centrifuge before opening to ensure complete recovery of vial contents.

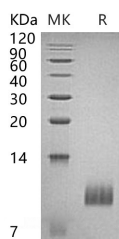
## Description

<b>Synonyms</b>	Protein S100-A2;CAN19;Protein S-100L;S100 calcium-binding protein A2;S100A2;S100L
<b>Species</b>	Human
<b>Expression Host</b>	E.coli
<b>Sequence</b>	Met1-Pro98
<b>Accession</b>	P29034
<b>Calculated Molecular Weight</b>	11.2 kDa
<b>Observed molecular weight</b>	10 kDa
<b>Tag</b>	None

## Properties

<b>Purity</b>	> 95 % as determined by reducing SDS-PAGE.
<b>Endotoxin</b>	< 1.0 EU per µg of the protein as determined by the LAL method.
<b>Storage</b>	Generally, lyophilized proteins are stable for up to 12 months when stored at -20 to -80°C. Reconstituted protein solution can be stored at 4-8°C for 2-7 days. Aliquots of reconstituted samples are stable at < -20°C for 3 months.
<b>Shipping</b>	This product is provided as lyophilized powder which is shipped with ice packs.
<b>Formulation</b>	Lyophilized from a 0.2 µm filtered solution of PBS, pH 7.4. Normally 5 % - 8 % trehalose, mannitol and 0.01% Tween80 are added as protectants before lyophilization. Please refer to the specific buffer information in the printed manual.
<b>Reconstitution</b>	Please refer to the printed manual for detailed information.

## Data



> 95 % as determined by reducing SDS-PAGE.

## Background

The calcium-binding Protein S100-A2 is a member of the S100 family of proteins containing 2 EF-hand calcium-binding motifs. S100-A2 was first detected in lung and kidney, and is mainly expressed in a subset of tissues and cells such as breast epithelia and liver. The S100A2 protein is a homodimer that undergoes a conformational change upon binding of calcium, and the active form functions in regulating cell proliferation and differentiation, gene transcription, and p53-dependent growth arrest and apoptosis. This protein is regarded as a putative tumor suppressor, and thus chromosomal rearrangements and reduced expression of S100A2 gene have been implicated in certain carcinomas.

## For Research Use Only

A Reliable Research Partner in Life Science and Medicine

Toll-free: 1-888-852-8623

Web: [www.elabscience.com](http://www.elabscience.com)

Tel: 1-832-243-6086

Email: [techsupport@elabscience.com](mailto:techsupport@elabscience.com)

Fax: 1-832-243-6017