

## APPL1 antibody

### Product Information

Catalog No.:	FNab00516
Size:	100µg
Form:	liquid
Purification:	Immunogen affinity purified
Purity:	≥95% as determined by SDS-PAGE
Host:	Rabbit
Clonality:	polyclonal
Clone ID:	None
IsoType:	IgG
Storage:	PBS with 0.02% sodium azide and 50% glycerol pH 7.3, -20°C for 12 months(Avoid repeated freeze / thaw cycles.)

### Background

Adapter protein that interacts with proteins involved in different cellular signaling pathways. Required for the regulation of cell proliferation in response to extracellular signals from an early endosomal compartment. Links Rab5 to nuclear signal transduction. Involved in the regulation of the insulin receptor signaling pathway.

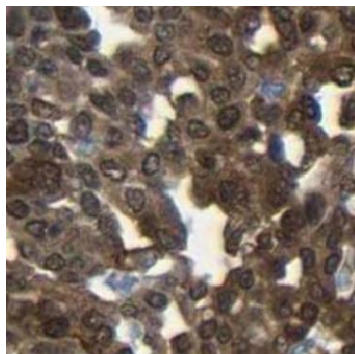
### Immunogen information

Immunogen:	adaptor protein, phosphotyrosine interaction, PH domain and leucine zipper containing 1
Synonyms:	DCC-interacting protein 13-alpha (Dip13-alpha) Adapter protein containing PH domain, PTB domain and leucine zipper motif 1 APPL1 APPL DIP13A KIAA1428
Observed MW:	80 kDa
Uniprot ID :	Q9UKG1

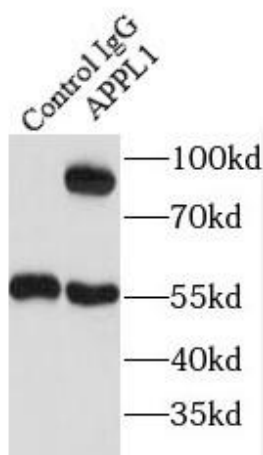
### Application

Reactivity:	Human, Mouse, Rat
Tested Application:	ELISA, WB, IF, IHC, IP
Recommended dilution:	WB: 1:500-1:2000; IP: 1:200-1:1000; IHC: 1:20-1:200; IF: 1:20-1:200

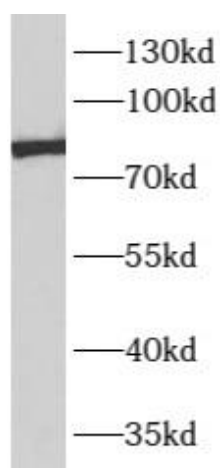
Image:



Immunohistochemistry of paraffin-embedded human ovary tumor using FNab00516(APPL1 antibody) at dilution of 1:50



IP Result of anti-APPL1 (IP:FNab00516, 4ug; Detection:FNab00516 1:1000) with mouse brain tissue lysate 2640ug.



human brain tissue were subjected to SDS PAGE followed by western blot with FNab00516(APPL1 antibody) at dilution of 1:500