

ARL4C antibody

Product Information

| | |
|---------------|--|
| Catalog No.: | FNab00578 |
| Size: | 100µg |
| Form: | liquid |
| Purification: | Immunogen affinity purified |
| Purity: | ≥95% as determined by SDS-PAGE |
| Host: | Rabbit |
| Clonality: | polyclonal |
| Clone ID: | None |
| IsoType: | IgG |
| Storage: | PBS with 0.02% sodium azide and 50% glycerol pH 7.3, -20°C for 12 months(Avoid repeated freeze / thaw cycles.) |

Background

Small GTP-binding protein which cycles between an inactive GDP-bound and an active GTP-bound form, and the rate of cycling is regulated by guanine nucleotide exchange factors(GEF) and GTPase-activating proteins(GAP). GTP-binding protein that does not act as an allosteric activator of the cholera toxin catalytic subunit. May be involved in transport between a perinuclear compartment and the plasma membrane, apparently linked to the ABCA1-mediated cholesterol secretion pathway. Recruits CYTH1, CYTH2, CYTH3 and CYTH4 to the plasma membrane in the GDP-bound form. Regulates the microtubule-dependent intracellular vesicular transport from early endosome to recycling endosome process.

Immunogen information

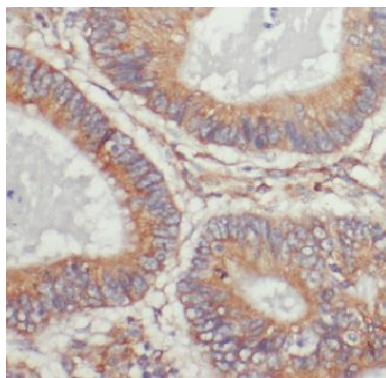
| | |
|--------------|--|
| Immunogen: | ADP-ribosylation factor-like 4C |
| Synonyms: | ADP-ribosylation factor-like protein 4C ADP-ribosylation factor-like protein 7 ADP-ribosylation factor-like protein LAK ARL4C ARL7 |
| Observed MW: | 21-25 kDa |
| Uniprot ID : | P56559 |

Application

| | |
|---------------------|--------------------|
| Reactivity: | Human, Mouse |
| Tested Application: | ELISA, WB, IHC, IF |

Recommended dilution: WB: 1:500-1:1000; IHC: 1:50-1:500; IF: 1:50-1:500

Image:



Immunohistochemistry of paraffin-embedded human colon cancer tissue slide using FNab00578(ARL4C Antibody) at dilution of 1:200



HUVEC cells were subjected to SDS PAGE followed by western blot with FNab00578(ARL4C Antibody) at dilution of 1:600