

ATF4 antibody

Product Information

Catalog No.:	FNab00663
Size:	100µg
Form:	liquid
Purification:	Protein A+G purification
Purity:	≥95% as determined by SDS-PAGE
Host:	Mouse
Clonality:	monoclonal
Clone ID:	0B11
IsoType:	IgG1
Storage:	PBS with 0.02% sodium azide and 50% glycerol pH 7.3, -20°C for 12 months(Avoid repeated freeze / thaw cycles.)

Background

Transcriptional activator. Binds the cAMP response element(CRE)(consensus: 5'-GTGACGT[AC][AG]-3'), a sequence present in many viral and cellular promoters. Cooperates with FOXO1 in osteoblasts to regulate glucose homeostasis through suppression of beta-cell production and decrease in insulin production(By similarity). It binds to a Tax-responsive enhancer element in the long terminal repeat of HTLV-I. Regulates the induction of DDIT3/CHOP and asparagine synthetase(ASNS) in response to endoplasmic reticulum(ER) stress. In concert with DDIT3/CHOP, activates the transcription of TRIB3 and promotes ER stress-induced neuronal apoptosis by regulating the transcriptional induction of BBC3/PUMA. Activates transcription of SIRT4. Regulates the circadian expression of the core clock component PER2 and the serotonin transporter SLC6A4. Binds in a circadian time-dependent manner to the cAMP response elements(CRE) in the SLC6A4 and PER2 promoters and periodically activates the transcription of these genes. During ER stress response, activates the transcription of NLRP1, possibly in concert with other factors(PubMed:26086088).

Immunogen information

Immunogen:	activating transcription factor 4
Synonyms:	Cyclic AMP-dependent transcription factor ATF-4 (cAMP-dependent transcription factor ATF-4) Activating transcription factor 4 Cyclic AMP-responsive element-binding protein 2 (CREB-2, cAMP-responsive element-binding protein 2) Tax-responsive enhancer element-binding protein 67 (TaxREB67) ATF4 CREB2 TXREB

Observed MW: 50-58 kDa

Uniprot ID : P18848

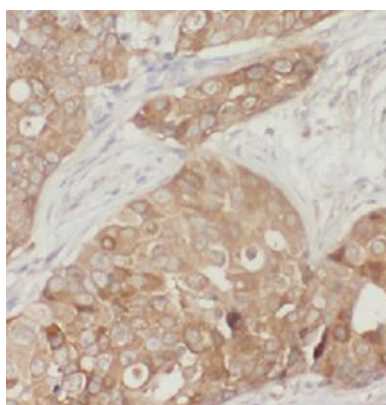
Application

Reactivity: Human, Mouse

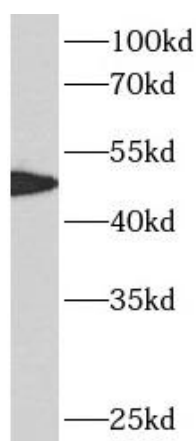
Tested Application: ELISA, IHC, WB, IF

Recommended dilution: WB: 1:1000-1:2000; IHC: 1:50-1:300; IF: 1:20-1:100

Image:



Immunohistochemistry of paraffin-embedded human breast cancer tissue slide using FNab00663(ATF4 Antibody) at dilution of 1:50 heat mediated antigen retrieved with Tris-EDTA buffer(pH9).



HepG2 cells were subjected to SDS PAGE followed by western blot with FNab00663(ATF4 Antibody) at dilution of 1:2000