

## ATF6B antibody

### Product Information

Catalog No.:	FNab00665
Size:	100µg
Form:	liquid
Purification:	Immunogen affinity purified
Purity:	≥95% as determined by SDS-PAGE
Host:	Rabbit
Clonality:	polyclonal
Clone ID:	None
IsoType:	IgG
Storage:	PBS with 0.02% sodium azide and 50% glycerol pH 7.3, -20°C for 12 months(Avoid repeated freeze / thaw cycles.)

### Background

The endoplasmic reticulum (ER)-transmembrane proteins, ATF6 alpha (ATF6) and ATF6 beta (ATF6B), are cleaved during the ER stress response (ERSR). The resulting N-terminal fragments of both ATF6 isoforms, which have conserved basic leucine-zipper and DNA binding domains but divergent transcriptional activation domains, translocate to the nucleus where they bind to ER stress-response elements (ERSE) in ERSR, such as Bip/GRP78. This antibody could recognize ATF6 beta (110kd) and its cleaved forms(60,80kd )(PMID: 11256944)

### Immunogen information

Immunogen:	activating transcription factor 6 beta
Synonyms:	Cyclic AMP-dependent transcription factor ATF-6 beta (cAMP-dependent transcription factor ATF-6 beta) Activating transcription factor 6 beta (ATF6-beta) Protein G13 cAMP response element-binding protein-related protein (Creb-rp) cAMP-responsive element-binding protein-like 1 Processed cyclic AMP-dependent transcription factor ATF-6 beta ATF6B CREBL1 G13
Observed MW:	110 kDa, 60 kDa, 80 kDa
Uniprot ID :	Q99941

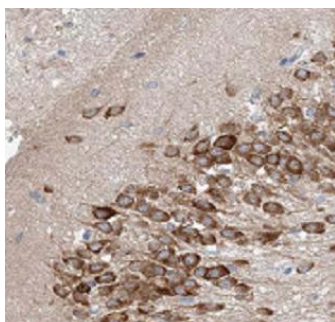
### Application

Reactivity:	Human, Mouse, Rat
-------------	-------------------

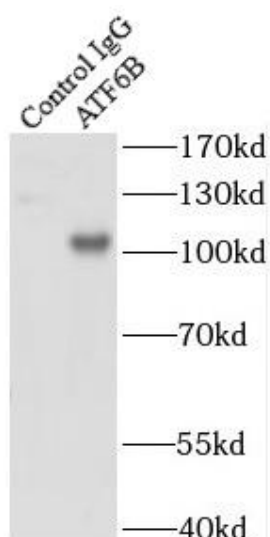
Tested Application: ELISA, WB, IHC, IF, IP

Recommended dilution: WB: 1:1000-1:4000; IP:1:500-1:2000; IHC: 1:20-1:200; IF: 1:10-1:100

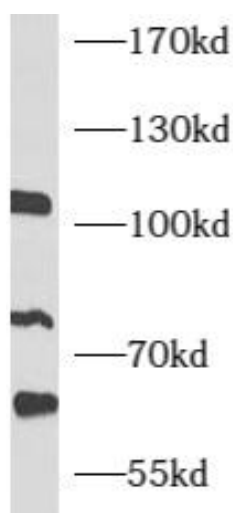
Image:



Immunohistochemistry of paraffin-embedded human brain using FNab00665(ATF6B antibody) at dilution of 1:100



IP Result of anti-ATF6B (IP:FNab00665, 4ug; Detection:FNab00665 1:1000) with Jurkat cells lysate 3200ug.



Jurkat cells were subjected to SDS PAGE followed by western blot with FNab00665(ATF6B antibody) at dilution of 1:1000