

PNPLA2 antibody

Product Information

Catalog No.:	FNab00680
Size:	100µg
Form:	liquid
Purification:	Immunogen affinity purified
Purity:	≥95% as determined by SDS-PAGE
Host:	Rabbit
Clonality:	polyclonal
Clone ID:	None
IsoType:	IgG
Storage:	PBS with 0.02% sodium azide and 50% glycerol pH 7.3, -20°C for 12 months(Avoid repeated freeze / thaw cycles.)

Background

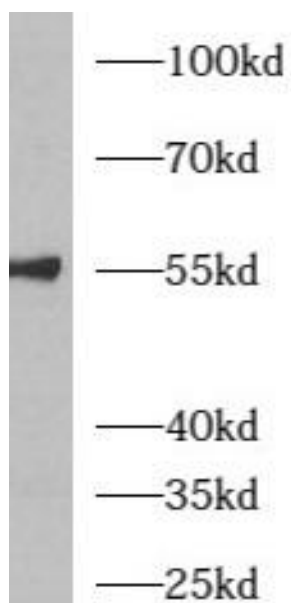
None

Immunogen information

Immunogen:	patatin-like phospholipase domain containing 2
Synonyms:	Patatin-like phospholipase domain-containing protein 2 Adipose triglyceride lipase Calcium-independent phospholipase A2-zeta (iPLA2-zeta) Desnutrin Pigment epithelium-derived factor receptor (PEDF-R) TTS2.2 Transport-secretion protein 2 (TTS2) PNPLA2 ATGL
Observed MW:	55 kDa
Uniprot ID :	Q96AD5

Application

Reactivity:	Human, Mouse, Rat
Tested Application:	ELISA, WB
Recommended dilution:WB:	1:500-1:1000
Image:	



A431 cells were subjected to SDS PAGE followed by western blot with FNab00680(ATGL antibody) at dilution of 1:500