

ATP1A2-Specific antibody

Product Information

Catalog No.:	FNab00694
Size:	100µg
Form:	liquid
Purification:	Immunogen affinity purified
Purity:	≥95% as determined by SDS-PAGE
Host:	Rabbit
Clonality:	polyclonal
Clone ID:	None
IsoType:	IgG
Storage:	PBS with 0.02% sodium azide and 50% glycerol pH 7.3, -20°C for 12 months(Avoid repeated freeze / thaw cycles.)

Background

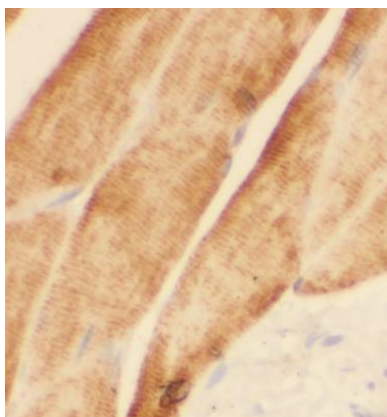
None

Immunogen information

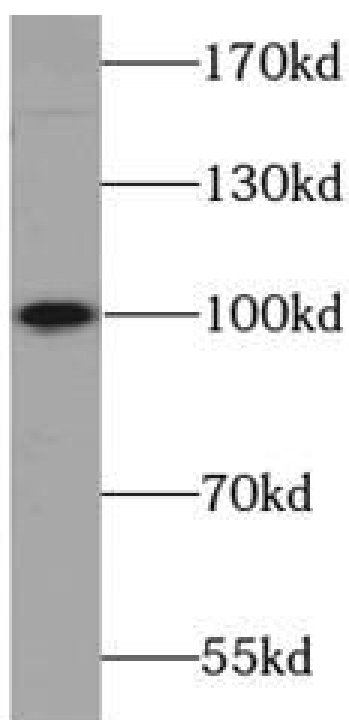
Immunogen:	ATPase, Na ⁺ /K ⁺ transporting, alpha 2(+) polypeptide
Synonyms:	Sodium/potassium-transporting ATPase subunit alpha-2 (Na ⁺)/K ⁺) ATPase alpha-2 subunit) Sodium pump subunit alpha-2 ATP1A2 KIAA0778
Observed MW:	100 kDa
Uniprot ID :	P50993

Application

Reactivity:	Human, Mouse
Tested Application:	ELISA, WB, IHC
Recommended dilution:	WB: 1:500-1:1000; IHC: 1:20-1:200
Image:	



Immunohistochemistry of paraffin-embedded human skeletal muscle using FNab00694(ATP1A2-Specific antibody) at dilution of 1:50



mouse brain tissue were subjected to SDS PAGE followed by western blot with FNab00694(ATP1A2-Specific antibody) at dilution of 1:800