

ATP6V1A antibody

Product Information

Catalog No.:	FNab00715
Size:	100µg
Form:	liquid
Purification:	Immunogen affinity purified
Purity:	≥95% as determined by SDS-PAGE
Host:	Rabbit
Clonality:	polyclonal
Clone ID:	None
IsoType:	IgG
Storage:	PBS with 0.02% sodium azide and 50% glycerol pH 7.3, -20°C for 12 months(Avoid repeated freeze / thaw cycles.)

Background

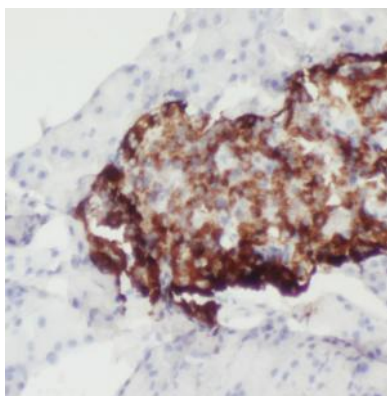
Catalytic subunit of the peripheral V1 complex of vacuolar ATPase. V-ATPase vacuolar ATPase is responsible for acidifying a variety of intracellular compartments in eukaryotic cells.

Immunogen information

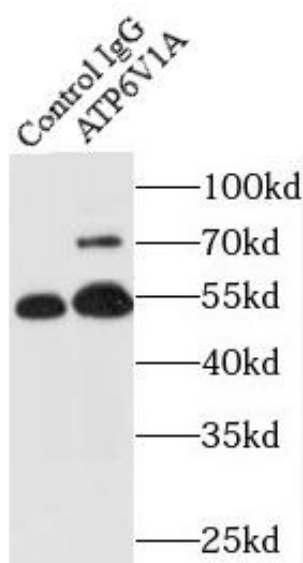
Immunogen:	ATPase, H ⁺ transporting, lysosomal 70kDa, V1 subunit A
Synonyms:	V-type proton ATPase catalytic subunit A (V-ATPase subunit A) V-ATPase 69 kDa subunit Vacuolar ATPase isoform VA68 Vacuolar proton pump subunit alpha ATP6V1A ATP6A1 ATP6V1A1 VPP2
Observed MW:	68 kDa
Uniprot ID :	P38606

Application

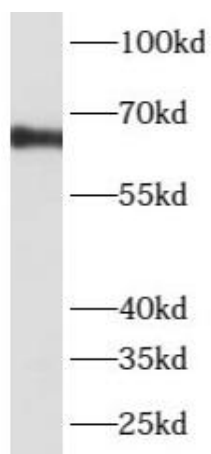
Reactivity:	Human, Mouse, Rat
Tested Application:	ELISA, WB, IHC, IP
Recommended dilution:	WB: 1:500-1:2000; IP: 1:500-1:2000; IHC: 1:20-1:200
Image:	



Immunohistochemistry of paraffin-embedded human pancreas using FNab00715(ATP6V1A antibody) at dilution of 1:100



IP Result of anti-ATP6V1A (IP:FNab00715, 4ug; Detection:FNab00715 1:500) with HeLa cells lysate 4000ug.



mouse kidney tissue were subjected to SDS PAGE followed by western blot with FNab00715(ATP6V1A antibody) at dilution of 1:500