

BBS2 antibody

Product Information

Catalog No.:	FNab00816
Size:	100µg
Form:	liquid
Purification:	Protein A+G purification
Purity:	≥95% as determined by SDS-PAGE
Host:	Mouse
Clonality:	monoclonal
Clone ID:	9F10
IsoType:	IgG2a
Storage:	PBS with 0.02% sodium azide and 50% glycerol pH 7.3, -20°C for 12 months(Avoid repeated freeze / thaw cycles.)

Background

The BBSome complex is thought to function as a coat complex required for sorting of specific membrane proteins to the primary cilia. The BBSome complex is required for ciliogenesis but is dispensable for centriolar satellite function. This ciliogenic function is mediated in part by the Rab8 GDP/GTP exchange factor, which localizes to the basal body and contacts the BBSome. Rab8(GTP) enters the primary cilium and promotes extension of the ciliary membrane. Firstly the BBSome associates with the ciliary membrane and binds to RAB3IP/Rabin8, the guanosyl exchange factor(GEF) for Rab8 and then the Rab8-GTP localizes to the cilium and promotes docking and fusion of carrier vesicles to the base of the ciliary membrane. The BBSome complex, together with the LTZL1, controls SMO ciliary trafficking and contributes to the sonic hedgehog(SHH) pathway regulation. Required for proper BBSome complex assembly and its ciliary localization.

Immunogen information

Immunogen:	Bardet-Biedl syndrome 2
Synonyms:	Bardet-Biedl syndrome 2 protein BBS2
Observed MW:	80 kDa
Uniprot ID :	Q9BXC9

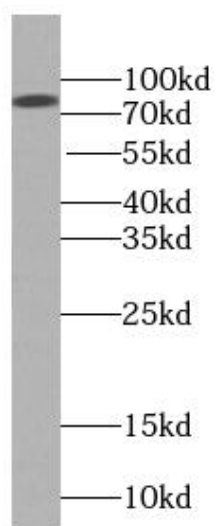
Application

Reactivity:	Human, Dog
-------------	------------

Tested Application: ELISA, WB, IF

Recommended dilution: WB: 1:500-1:2000; IF: 1:20-1:200

Image:



K-562 cells were subjected to SDS PAGE followed by western blot with FNab00816(BBS2 Antibody) at dilution of 1:1000