

BCKDHB antibody

Product Information

Catalog No.:	FNab00834
Size:	100µg
Form:	liquid
Purification:	Immunogen affinity purified
Purity:	≥95% as determined by SDS-PAGE
Host:	Rabbit
Clonality:	polyclonal
Clone ID:	None
IsoType:	IgG
Storage:	PBS with 0.02% sodium azide and 50% glycerol pH 7.3, -20°C for 12 months(Avoid repeated freeze / thaw cycles.)

Background

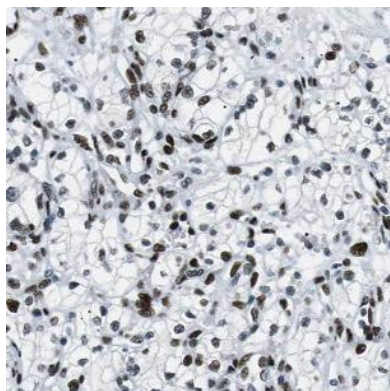
The branched-chain alpha-keto dehydrogenase complex catalyzes the overall conversion of alpha-keto acids to acyl-CoA and CO(2). It contains multiple copies of three enzymatic components: branched-chain alpha-keto acid decarboxylase(E1), lipoamide acyltransferase(E2) and lipoamide dehydrogenase(E3).

Immunogen information

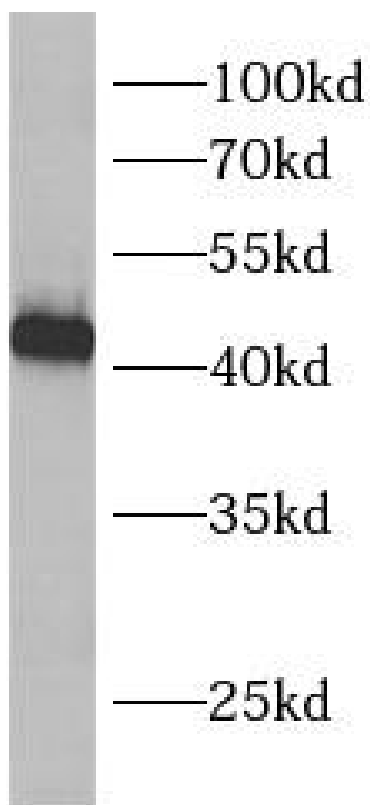
Immunogen:	branched chain keto acid dehydrogenase E1, beta polypeptide
Synonyms:	2-oxoisovalerate dehydrogenase subunit beta, mitochondrial Branched-chain alpha-keto acid dehydrogenase E1 component beta chain (BCKDE1B, BCKDH E1-beta) BCKDHB
Observed MW:	43 kDa
Uniprot ID :	P21953

Application

Reactivity:	Human, Mouse, Rat
Tested Application:	ELISA, WB, IHC
Recommended dilution:	WB: 1:500-1:2000; IHC: 1:20-1:200
Image:	



Immunohistochemistry of paraffin-embedded human renal cell carcinoma tissue slide using FNab00834(BCKDHB Antibody) at dilution of 1:50



HEK-293 cells were subjected to SDS PAGE followed by western blot with FNab00834(BCKDHB Antibody) at dilution of 1:600