

## BCL10 antibody

### Product Information

Catalog No.:	FNab00835
Size:	100µg
Form:	liquid
Purification:	Immunogen affinity purified
Purity:	≥95% as determined by SDS-PAGE
Host:	Rabbit
Clonality:	polyclonal
Clone ID:	None
IsoType:	IgG
Storage:	PBS with 0.02% sodium azide and 50% glycerol pH 7.3, -20°C for 12 months(Avoid repeated freeze / thaw cycles.)

### Background

Involved in adaptive immune response(PubMed:25365219). Promotes apoptosis, pro-caspase-9 maturation and activation of NF-kappa-B via NIK and IKK. May be an adapter protein between upstream TNFR1-TRADD-RIP complex and the downstream NIK-IKK-IKAP complex. Is a substrate for MALT1(PubMed:18264101).

### Immunogen information

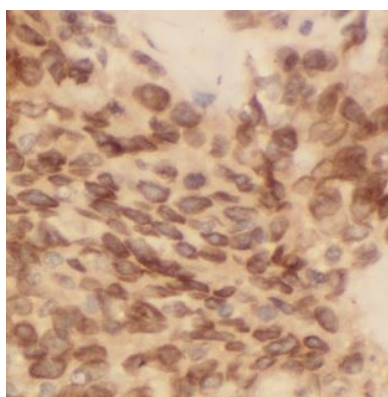
Immunogen:	B-cell CLL/lymphoma 10
Synonyms:	B-cell lymphoma/leukemia 10 B-cell CLL/lymphoma 10 (Bcl-10) CARD-containing molecule enhancing NF-kappa-B CARD-like apoptotic protein (hCLAP) CED-3/ICH-1 prodomain homologous E10-like regulator (CIPER) Cellular homolog of vCARMEN (cCARMEN) Cellular-E10 (c-E10) Mammalian CARD-containing adapter molecule E10 (mE10) BCL10 CIPER CLAP
Observed MW:	32 kDa
Uniprot ID :	O95999

### Application

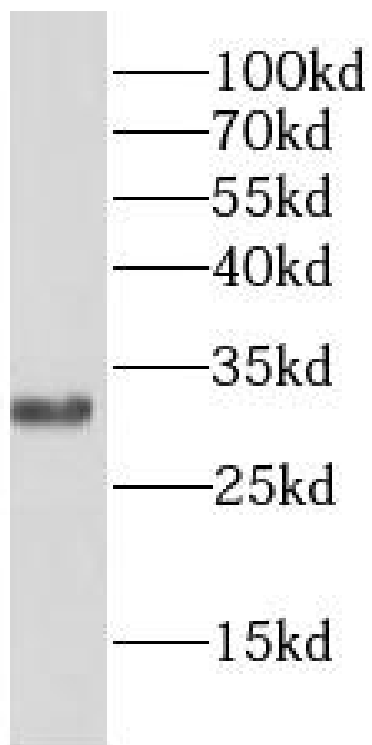
Reactivity:	Human, Mouse, Rat
Tested Application:	ELISA, WB, IHC

Recommended dilution: WB: 1:500-1:2000; IHC: 1:20-1:200

Image:



Immunohistochemistry of paraffin-embedded human breast cancer using FNab00835(BCL10 antibody) at dilution of 1:100



Jurkat cells were subjected to SDS PAGE followed by western blot with FNab00835(BCL10 antibody) at dilution of 1:300