

BCL2L1 antibody

Product Information

Catalog No.:	FNab00843
Size:	100µg
Form:	liquid
Purification:	Protein A+G purification
Purity:	≥95% as determined by SDS-PAGE
Host:	Mouse
Clonality:	monoclonal
Clone ID:	2A9
IsoType:	IgG2a
Storage:	PBS with 0.02% sodium azide and 50% glycerol pH 7.3, -20°C for 12 months(Avoid repeated freeze / thaw cycles.)

Background

Potent inhibitor of cell death. Inhibits activation of caspases. Appears to regulate cell death by blocking the voltage-dependent anion channel(VDAC) by binding to it and preventing the release of the caspase activator, CYC1, from the mitochondrial membrane. Also acts as a regulator of G2 checkpoint and progression to cytokinesis during mitosis. Isoform Bcl-X(L) also regulates presynaptic plasticity, including neurotransmitter release and recovery, number of axonal mitochondria as well as size and number of synaptic vesicle clusters. During synaptic stimulation, increases ATP availability from mitochondria through regulation of mitochondrial membrane ATP synthase F(1)F(0) activity and regulates endocytic vesicle retrieval in hippocampal neurons through association with DMN1L and stimulation of its GTPase activity in synaptic vesicles. May attenuate inflammation impairing NLRP1-inflammasome activation, hence CASP1 activation and IL1B release(PubMed:17418785). Isoform Bcl-X(S) promotes apoptosis.

Immunogen information

Immunogen:	BCL2-like 1
Synonyms:	Bcl-2-like protein 1 (Bcl2-L-1) Apoptosis regulator Bcl-X BCL2L1 BCL2L BCLX
Observed MW:	35 kDa
Uniprot ID :	Q07817

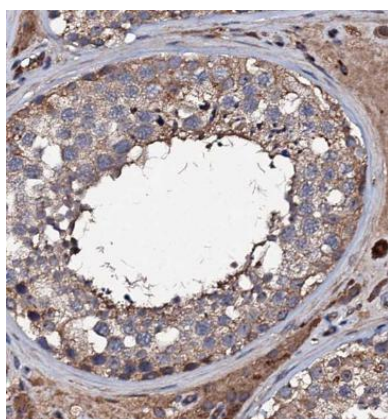
Application

Reactivity: Human

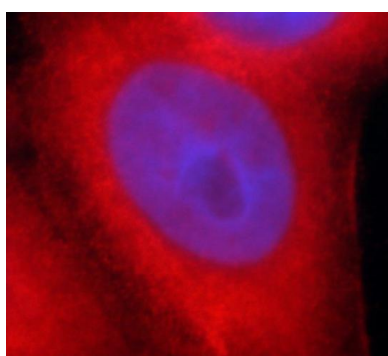
Tested Application: ELISA, WB, IHC, IF

Recommended dilution: WB: 1:2000-1:20000; IHC: 1:200-1:600; IF: 1:10-1:100

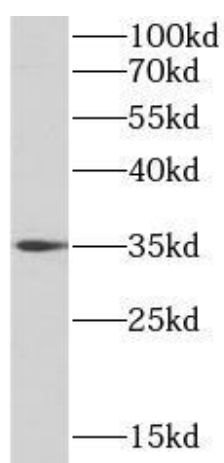
Image:



Immunohistochemistry of paraffin-embedded human testis using FNab00843(Bcl-xL antibody) at dilution of 1:50



Immunofluorescent analysis of HeLa cells, using BCL2L1 antibody FNab00843 at 1:25 dilution and Rhodamine-labeled goat anti-mouse IgG (red).



Raw 264.7 cells were subjected to SDS PAGE followed by western blot with FNab00843(Bcl-xL Antibody) at dilution of 1:20000