

BCL2L13 antibody

Product Information

Catalog No.:	FNab00846
Size:	100µg
Form:	liquid
Purification:	Immunogen affinity purified
Purity:	≥95% as determined by SDS-PAGE
Host:	Rabbit
Clonality:	polyclonal
Clone ID:	None
IsoType:	IgG
Storage:	PBS with 0.02% sodium azide and 50% glycerol pH 7.3, -20°C for 12 months(Avoid repeated freeze / thaw cycles.)

Background

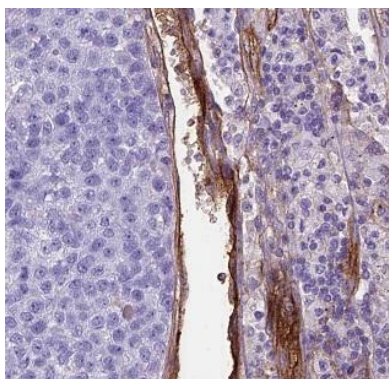
May promote the activation of caspase-3 and apoptosis.

Immunogen information

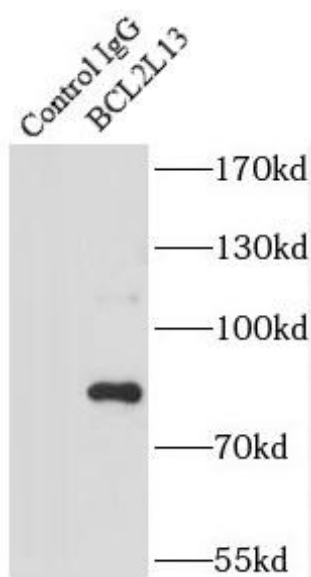
Immunogen:	BCL2-like 13(apoptosis facilitator)
Synonyms:	Bcl-2-like protein 13 (Bcl2-L-13) Bcl-rambo Protein Mil1 BCL2L13 MIL1
Observed MW:	85 kDa
Uniprot ID :	Q9BXX5

Application

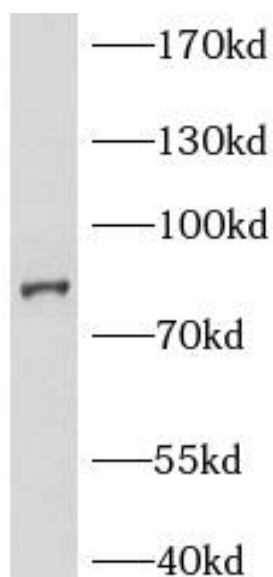
Reactivity:	Human, Mouse, Rat
Tested Application:	ELISA, WB, IHC, IF, IP
Recommended dilution:	WB: 1:1000-1:6000; IP: 1:500-1:3000; IHC: 1:50-1:500; IF: 1:50-1:500
Image:	



Immunohistochemistry of paraffin-embedded human pancreas using FNab00846(BCL2L13 antibody) at dilution of 1:100



IP Result of anti-BCL2L13 (IP:FNab00846, 3ug; Detection:FNab00846 1:100) with mouse heart tissue lysate 8000ug.



Jurkat cells were subjected to SDS PAGE followed by western blot with FNab00846(BCL2L13 antibody) at dilution of 1:500