

BEST1 antibody

Product Information

Catalog No.:	FNab00865
Size:	100µg
Form:	liquid
Purification:	Immunogen affinity purified
Purity:	≥95% as determined by SDS-PAGE
Host:	Rabbit
Clonality:	polyclonal
Clone ID:	None
IsoType:	IgG
Storage:	PBS with 0.02% sodium azide and 50% glycerol pH 7.3, -20°C for 12 months (Avoid repeated freeze / thaw cycles.)

Background

This gene encodes a member of the bestrophin gene family. This small gene family is characterized by proteins with a highly conserved N-terminus with four to six transmembrane domains. Bestrophins may form chloride ion channels or may regulate voltage-gated L-type calcium-ion channels. Bestrophins are generally believed to form calcium-activated chloride-ion channels in epithelial cells but they have also been shown to be highly permeable to bicarbonate ion transport in retinal tissue. Mutations in this gene are responsible for juvenile-onset vitelliform macular dystrophy (VMD2), also known as Best macular dystrophy, in addition to adult-onset vitelliform macular dystrophy (AVMD) and other retinopathies. Alternative splicing results in multiple variants encoding distinct isoforms.

Immunogen information

Immunogen:	bestrophin 1
Synonyms:	Bestrophin-1 TU15B Vitelliform macular dystrophy protein 2 BEST1 VMD2
Observed MW:	70 kDa
Uniprot ID :	O76090

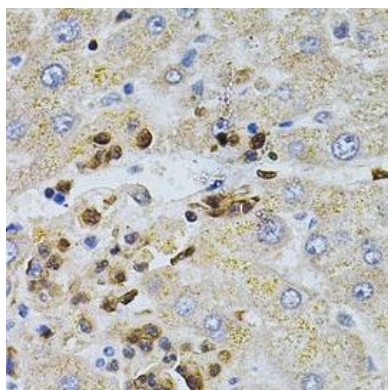
Application

Reactivity:	Human, Mouse, Rat
-------------	-------------------

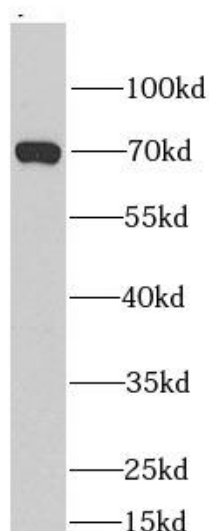
Tested Application: ELISA, WB, IHC

Recommended dilution: WB: 1:500 - 1:2000; IHC: 1:50 - 1:200

Image:



Immunohistochemistry of paraffin-embedded human liver injury using FNab00865(BEST1 Antibody) at dilution of 1:100



MCF7 cells were subjected to SDS PAGE followed by western blot with FNab00865(BEST1 antibody) at dilution of 1:1000