

## BEX2 antibody

### Product Information

Catalog No.:	FNab00884
Size:	100µg
Form:	liquid
Purification:	Immunogen affinity purified
Purity:	≥95% as determined by SDS-PAGE
Host:	Rabbit
Clonality:	polyclonal
Clone ID:	None
IsoType:	IgG
Storage:	PBS with 0.02% sodium azide and 50% glycerol pH 7.3, -20°C for 12 months(Avoid repeated freeze / thaw cycles.)

### Background

Regulator of mitochondrial apoptosis and G1 cell cycle in breast cancer. Protects the breast cancer cells against mitochondrial apoptosis and this effect is mediated through the modulation of BCL2 protein family, which involves the positive regulation of anti-apoptotic member BCL2 and the negative regulation of pro-apoptotic members BAD, BAK1 and PUMA. Required for the normal cell cycle progression during G1 in breast cancer cells through the regulation of CCND1 and CDKN1A. Regulates the level of PP2A regulatory subunit B and PP2A phosphatase activity. The homology between human BEX1 and BEX2 is 94%. This antibody detects both BEX1 and BEX2.

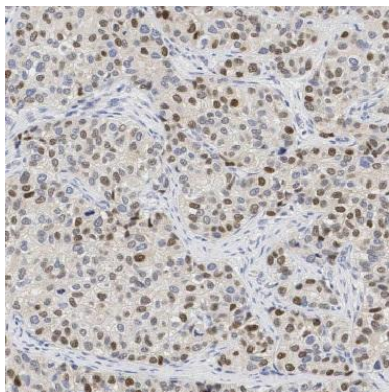
### Immunogen information

Immunogen:	brain expressed X-linked 2
Synonyms:	Protein BEX2 Brain-expressed X-linked protein 2 (hBex2) BEX2
Observed MW:	10-15 kDa
Uniprot ID :	Q9BXY8

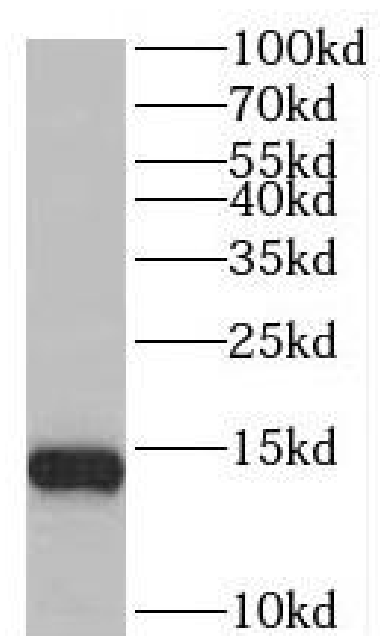
### Application

Reactivity:	Human, Mouse, Rat
Tested Application:	ELISA, WB, IHC
Recommended dilution:	WB: 1:500-1:1000; IHC: 1:20-1:200

Image:



Immunohistochemistry of paraffin-embedded human breast cancer using FNab00884(BEX2 antibody) at dilution of 1:100



human brain tissue were subjected to SDS PAGE followed by western blot with FNab00884(BEX2 antibody) at dilution of 1:500