

BHLHE22 antibody

Product Information

Catalog No.:	FNab00887
Size:	100µg
Form:	liquid
Purification:	Immunogen affinity purified
Purity:	≥95% as determined by SDS-PAGE
Host:	Rabbit
Clonality:	polyclonal
Clone ID:	None
IsoType:	IgG
Storage:	PBS with 0.02% sodium azide and 50% glycerol pH 7.3, -20°C for 12 months(Avoid repeated freeze / thaw cycles.)

Background

Inhibits DNA binding of TCF3/E47 homodimers and TCF3(E47)/NEUROD1 heterodimers and acts as a strong repressor of Neurod1 and Myod-responsive genes, probably by heterodimerization with class a basic helix-loop-helix factors. Despite the presence of an intact basic domain, does not bind to DNA(By similarity). In the brain, may function as an area-specific transcription factor that regulates the postmitotic acquisition of area identities and elucidate the genetic hierarchy between progenitors and postmitotic neurons driving neocortical arealization. May be required for the survival of a specific population of inhibitory neurons in the superficial laminae of the spinal chord dorsal horn that may regulate pruritis. Seems to play a crucial role in the retinogenesis, in the specification of amacrine and bipolar subtypes. Forms with PRDM8 a transcriptional repressor complex controlling genes involved in neural development and neuronal differentiation.

Immunogen information

Immunogen:	basic helix-loop-helix family, member e22
Synonyms:	Class E basic helix-loop-helix protein 22 (bHLHe22) Class B basic helix-loop-helix protein 5 (bHLHb5) Trinucleotide repeat-containing gene 20 protein BHLHE22 BHLHB5 TNRC20
Observed MW:	37 kDa
Uniprot ID :	Q8NFI8

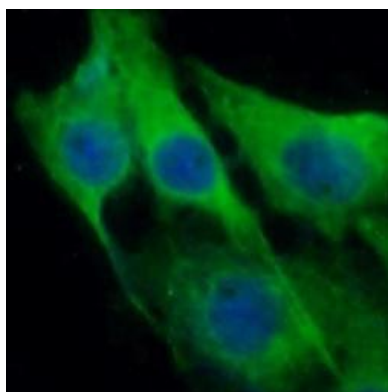
Application

Reactivity: Human, Mouse

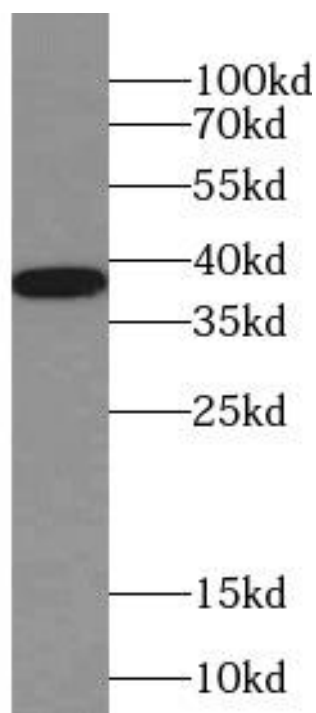
Tested Application: ELISA, WB, IF

Recommended dilution: WB: 1:200-1:1000; IF: 1:10-1:100

Image:



Immunofluorescent analysis of SH-SY5Y cells using FNab00887 (BHLHE22 antibody) at dilution of 1:25 and Alexa Fluor 488-conjugated Goat Anti-Rabbit IgG(H+L)



SH-SY5Y cells were subjected to SDS PAGE followed by western blot with FNab00887(BHLHE22 Antibody) at dilution of 1:300